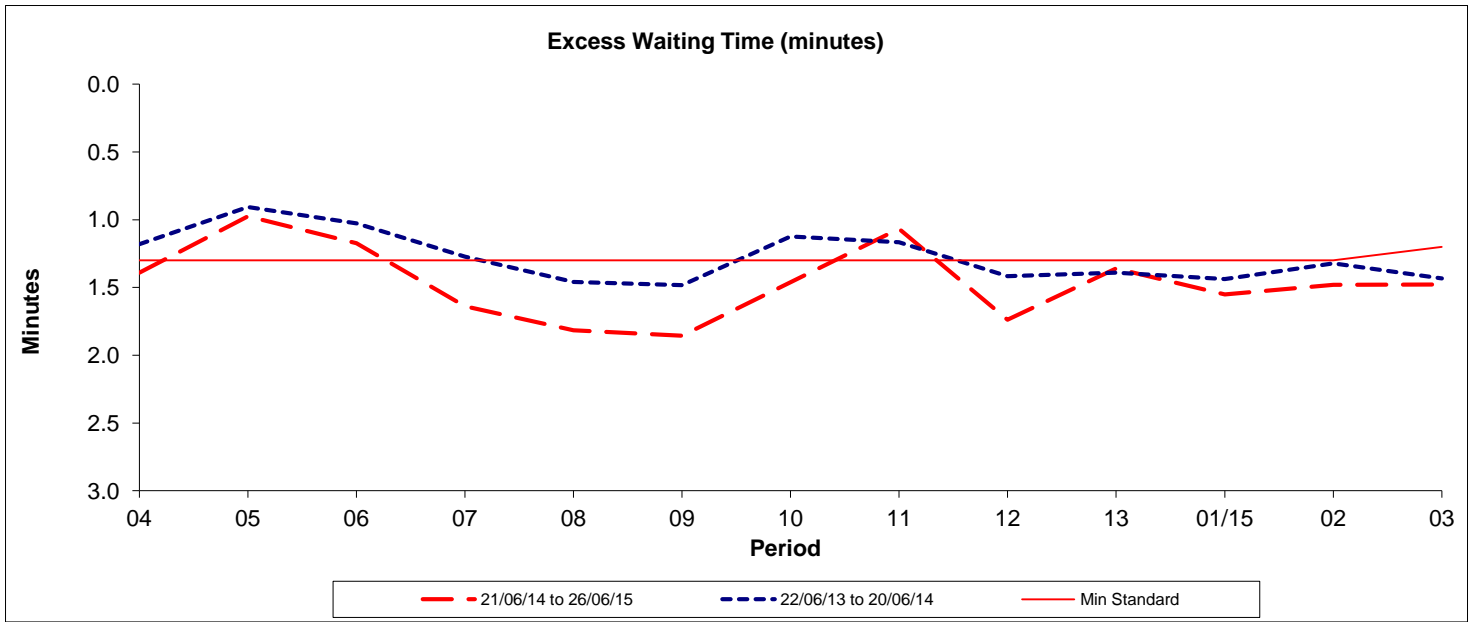




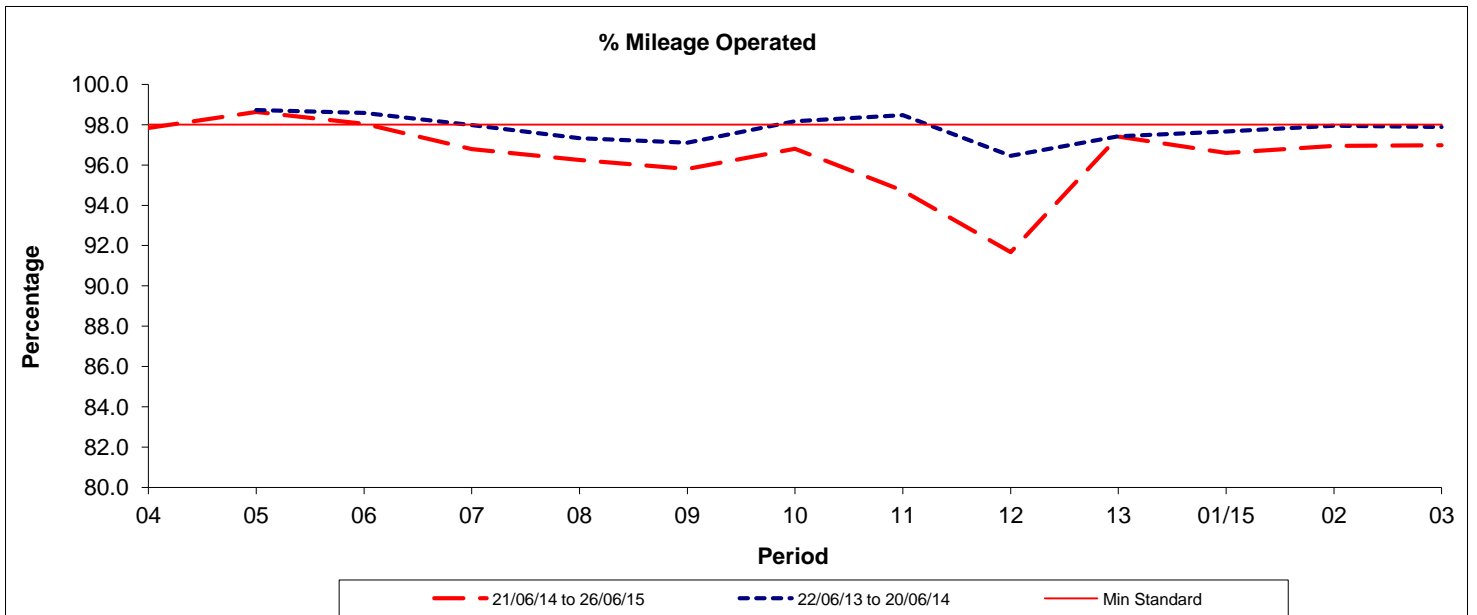
Reliability Performance (High Frequency)



Date Range / Period	04	05	06	07	08	09	10	11	12	13	01/15	02	03
21/06/14 to 26/06/15	1.39	0.98	1.17	1.64	1.82	1.86	1.46	1.07	1.74	1.36	1.55	1.48	1.48
22/06/13 to 20/06/14	1.18	0.91	1.03	1.27	1.46	1.48	1.12	1.17	1.42	1.39	1.44	1.32	1.43
Min Standard	1.30	1.30	1.30	1.30	1.30	1.30	1.30	1.30	1.30	1.30	1.30	1.30	1.20

The Excess Waiting Time figures are based on four weeks data

Mileage Performance



Date Range / Period	04	05	06	07	08	09	10	11	12	13	01/15	02	03
21/06/14 to 26/06/15	97.83	98.63	98.04	96.79	96.25	95.80	96.81	94.72	91.67	97.40	96.59	96.94	96.99
22/06/13 to 20/06/14		98.72	98.59	97.98	97.33	97.11	98.17	98.47	96.46	97.42	97.67	97.95	97.88
Min Standard	98.00	98.00	98.00	98.00	98.00	98.00	98.00	98.00	98.00	98.00	98.00	98.00	98.00

Mileage figures are based on four weeks data