



**TRANSPORT  
FOR LONDON**  

---

**EVERY JOURNEY MATTERS**



**Transport for London**

**Unique event spaces**



# Contents

---

**Put your event on the map** 4

---

**Tube stations** 6

---

Charing Cross

Aldwych

Bank station

---

**IFS Cloud Cable Car** 15

---

Cable car pods and experience centre

---

**Our piers** 19

---

Westminster Pier

Blackfriars Pier

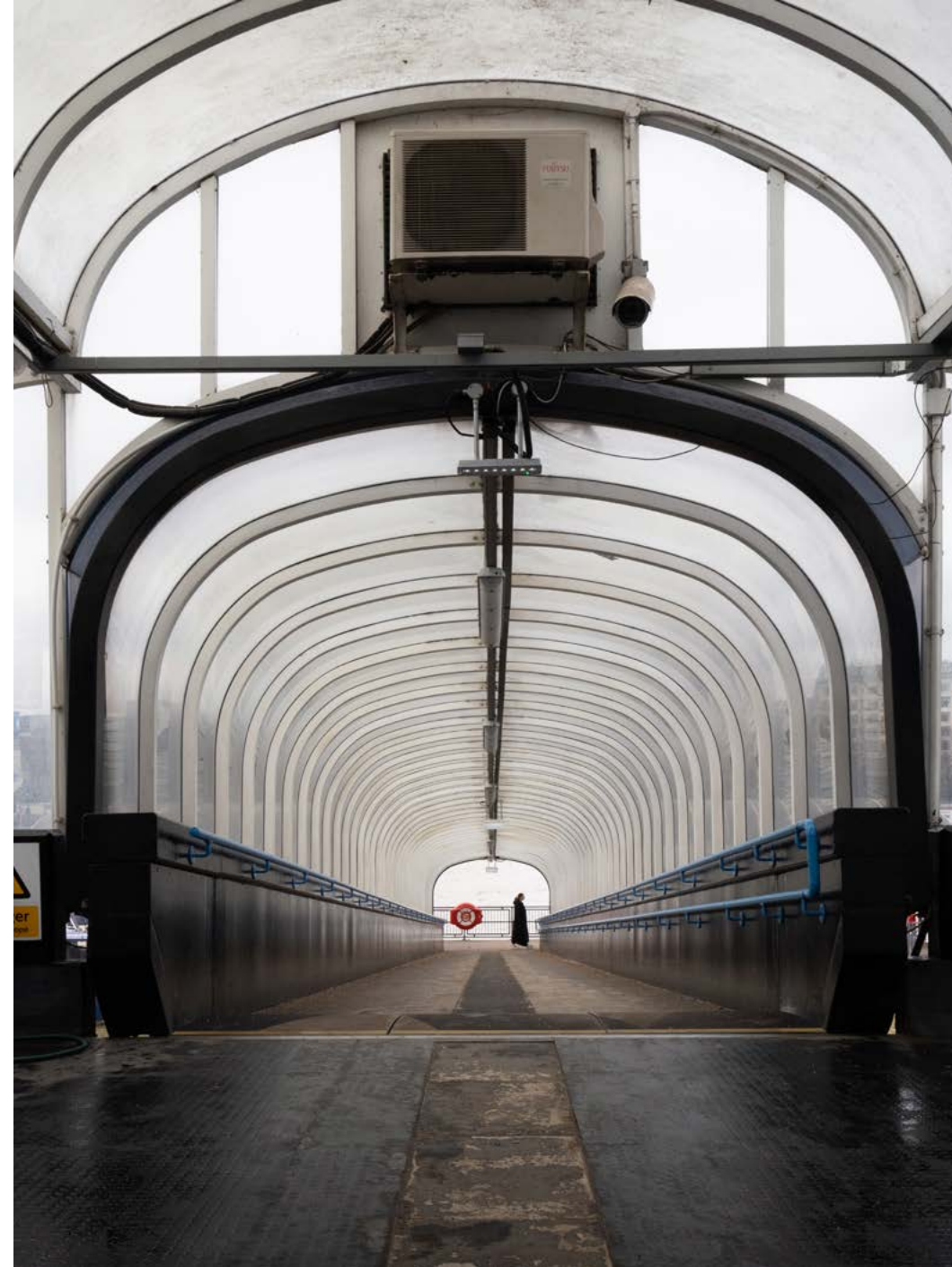
Our other piers



# Put your event on the map

From product launches to drinks receptions, seminars to cinema viewings, our event spaces are sure to impress your guests and provide a unique backdrop to any event.





Our spaces range from historic underground sites to modern stations and piers

We offer unrivalled access to the transport network in venues loaded with character and atmosphere, putting your event at the heart of the action.

We cater for everything from small working groups to events with hundreds of guests.





## Tube stations

Our disused platforms and ticket halls offer unique access to our stations. Our sites provide the perfect backdrop to a wide range of events



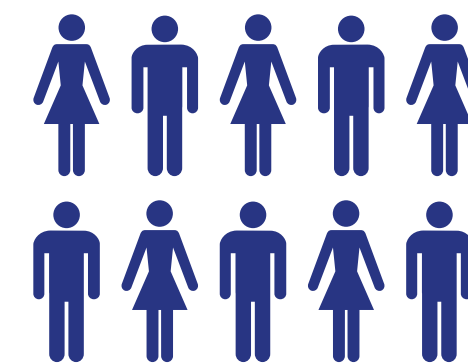
# Charing Cross

The disused Jubilee line platforms at Charing Cross provide a unique event space in the heart of London's West End



Hidden away between the Bakerloo and Northern line tunnels, these abandoned platforms are like mysterious worlds of their own

With original tiles and signs, this unique space will provide a vibrant, authentic London feel for your event.



**100**  
people can be  
accommodated

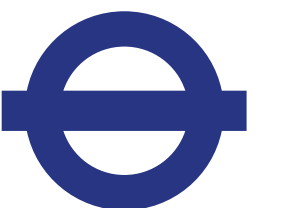
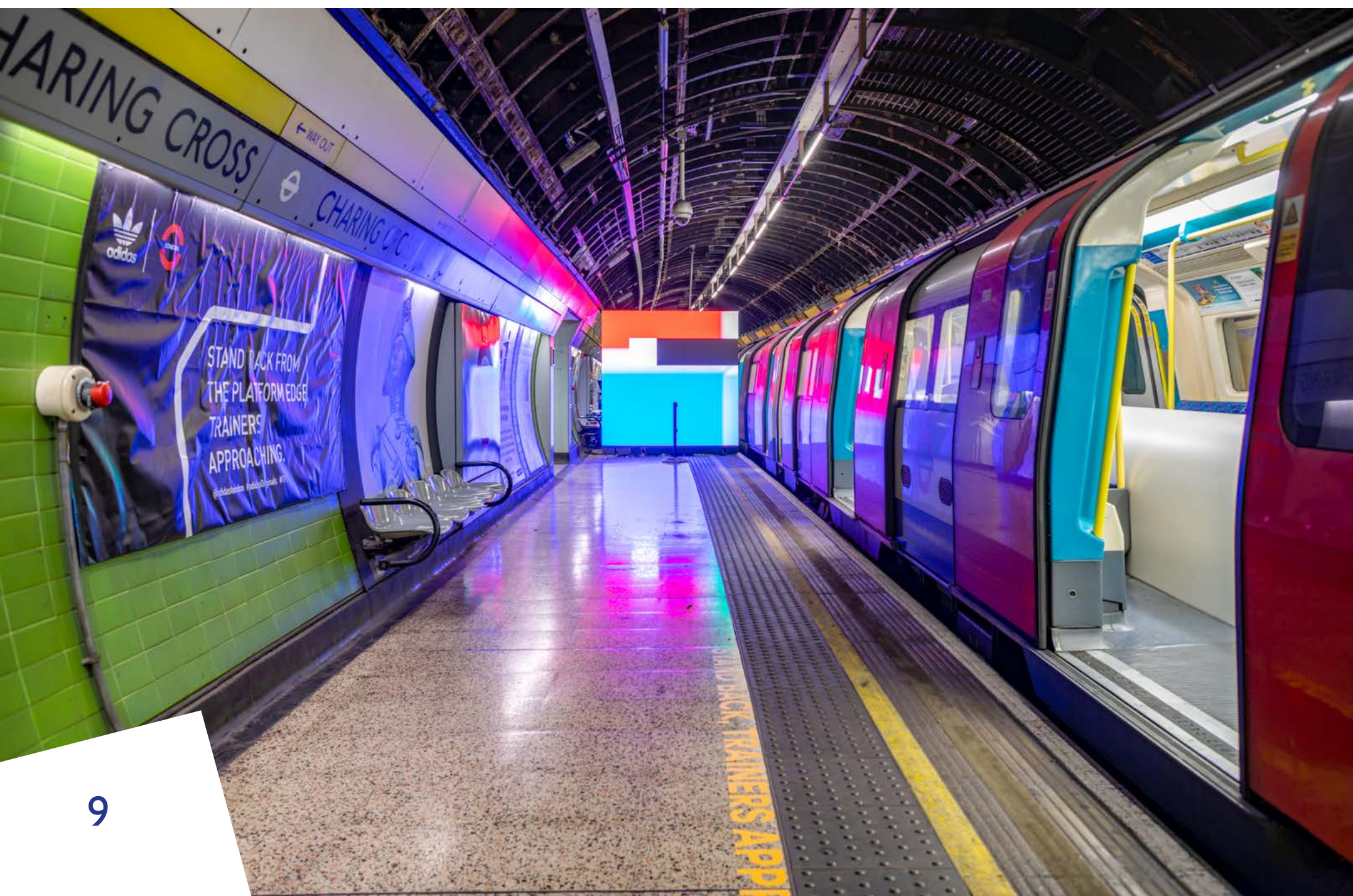






A stationary train in the platform can provide a great backdrop for events.

From film screenings to talent shows, the platform interchange area provides an unusual space suitable to host a wide range of events.



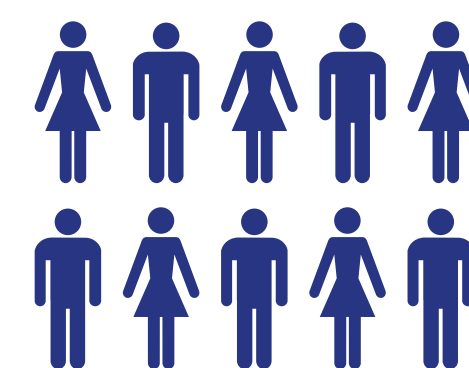
# Aldwych

The disused ticket hall provides a quirky, historic site that delivers all the atmosphere from the golden age of the Underground



Closed to passengers in 1994,  
this disused ticket hall is a  
mysterious place, holding  
secrets and memories of a  
forgotten London

Aldwych was designed by  
architect Leslie Green and  
has all the distinctive style that  
made his stations so recognisable.



**100**

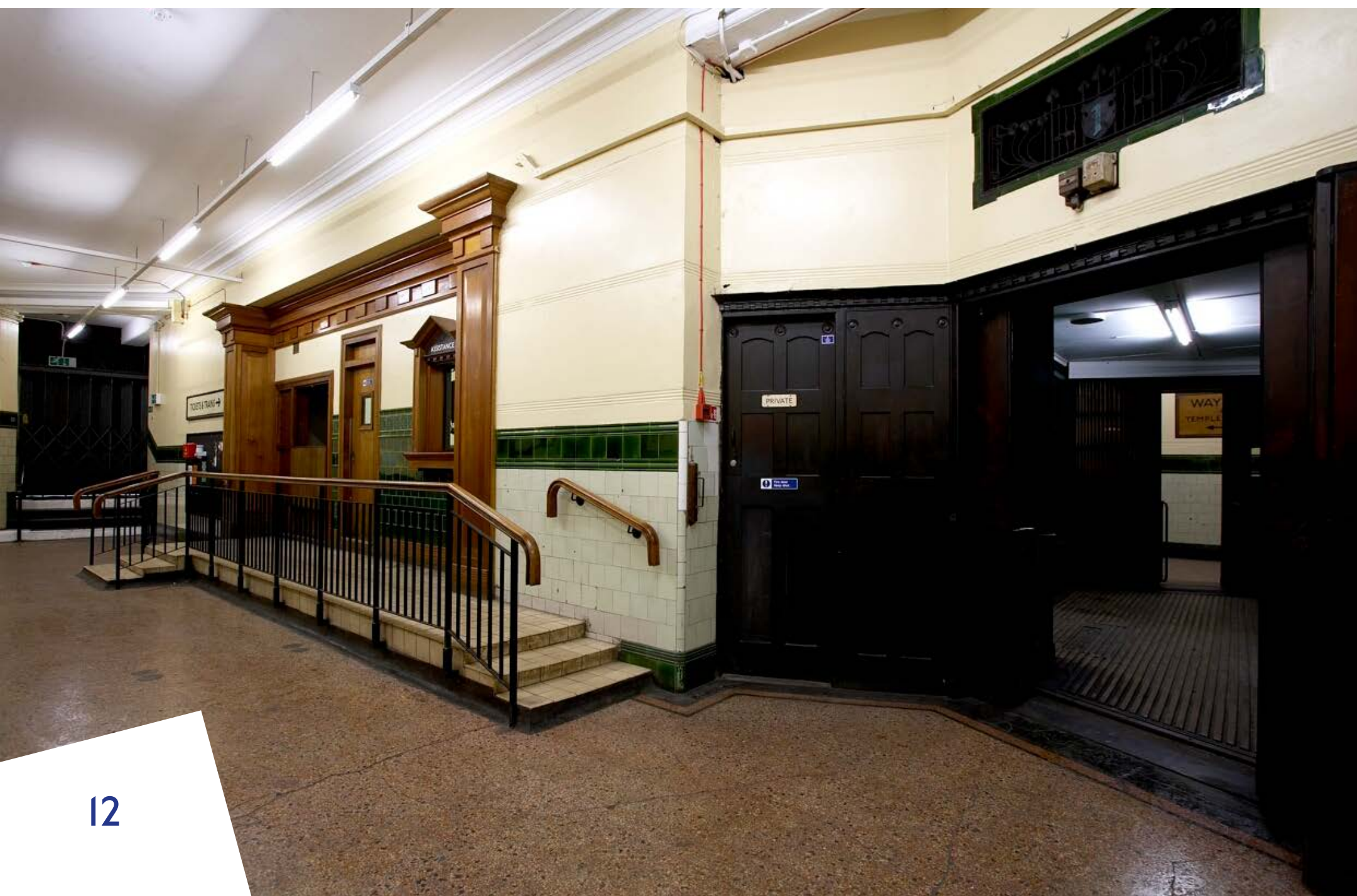
people can be  
accommodated





Once used as shelter and storage during the war, these spaces are rarely seen by the public.

The ticket hall, which is accessible, is perfect for product launches, treasure hunts and unique pre-event experiences.



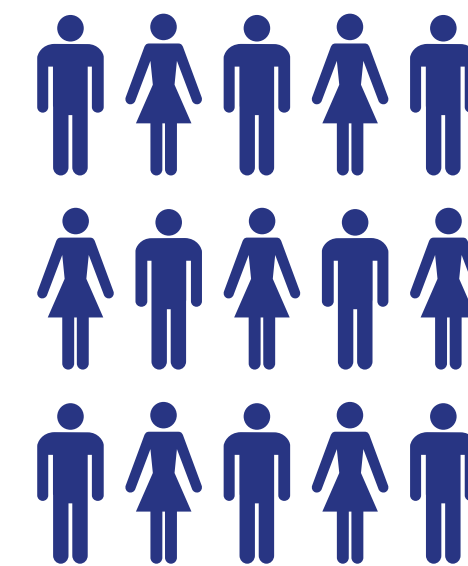
# Bank station

The Waterloo & City line platforms at Bank provide a sleek, modern backdrop for events, right in the heart of the City of London



As the Waterloo & City line only runs during the week, these unique, modern spaces are available at weekends for a range of events

There are long passenger walkways, escalators and travelators, as well as lift access to the platforms. Guests can even enjoy exclusive access to a Waterloo & City line train.



**150**  
people can be  
accommodated





## IFS Cloud Cable Car

A modern space with  
unrivalled views of London's  
historic industrial heartland



# Cable car pods and experience centre

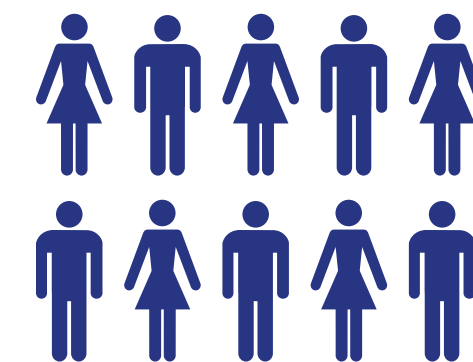
This bold structure is a symbol of the regeneration of the area and emblem of the unique, creative character of the city





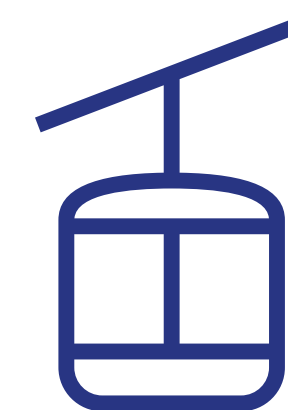
Rising from the Docklands in 2012, this striking feature is now firmly established as one of London's top attractions, and one of the most Instagrammable spots in the city

Crossing the Thames between Greenwich Peninsula and Royal Docks, the IFS Cloud Cable Car is just five minutes' walk from The O2 and North Greenwich Tube station.



**100**

people can be accommodated in the event space



**10**

people can be accommodated in the cable car pods





The experience centre is available for exclusive hire and boasts an interactive zone, restaurant, and shop located at the south terminal.

The event space, located next to the south terminal, is perfect for dinners, drinks receptions or award shows.

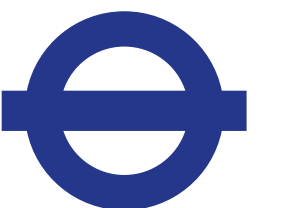
Enhance your event with a private cabin on the cable car, with a glass of champagne and spectacular views from 90 metres above the river.





## Our piers

With iconic London views along the Thames, our piers are unique venues for drinks receptions or more formal dinners



# Westminster Pier

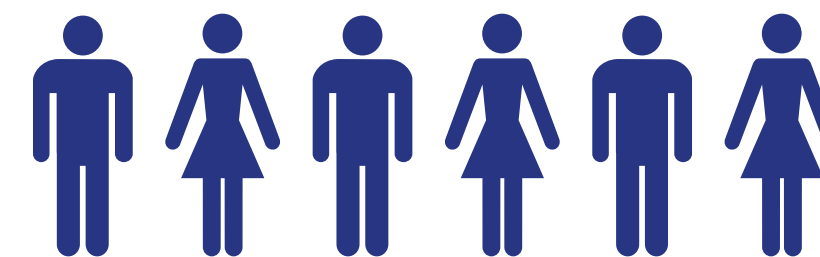
Enjoy some of the best views on the river, with a backdrop that includes Big Ben, The London Eye and County Hall



Boasting two large, self-contained glass waiting rooms with removable furniture, Westminster Pier is perfect for private parties and receptions at any time of year

The blank canvas spaces are ideal for banquet style dinners or drinks receptions, while guests take in the iconic skyline of London's Southbank from the best location on the Thames.

The spaces are available to hire for New Year celebrations, enabling you to skip the crowds and enjoy one of the best firework displays in the world.



**20-60**

people can be accommodated in each room





# Blackfriars Pier

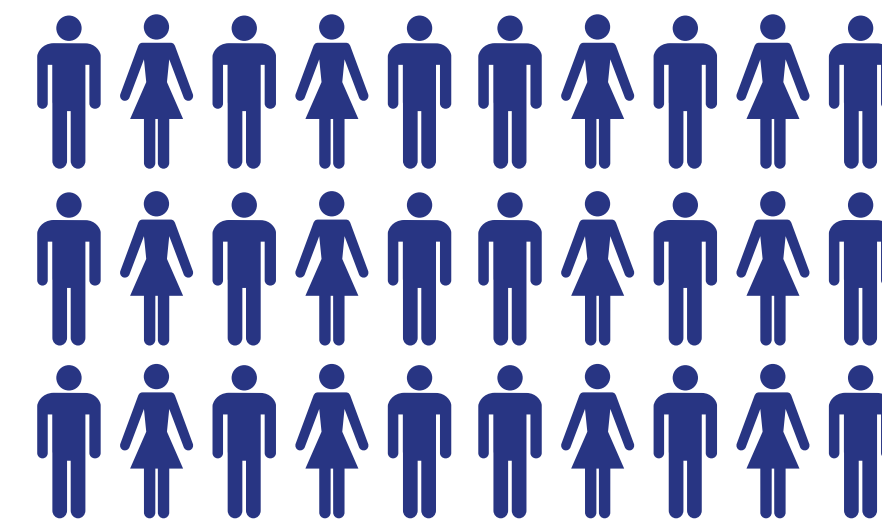
## Blackfriars Pier

Our newest and largest pier is perfect for larger gatherings and celebrations



Just a short walk from Blackfriars Tube station, this fully accessible pier offers views of the Tate Modern, Oxo Tower and The Shard

Ideal for larger gatherings or more dynamic events, this space could even be used for health and fitness classes, food markets, outdoor film screenings and more. There is even the option to charter private river boats to dock at this location.



**300**

people can be accommodated



# Tower Millennium Pier

Enjoy unrivalled views in this historic area of the capital

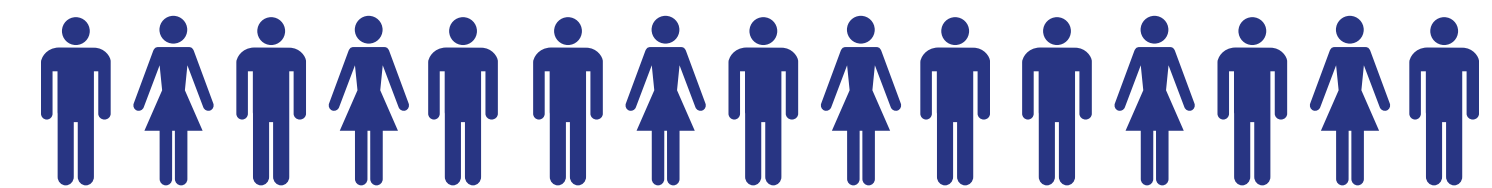




Beside the Tower of London and across the water from The Shard, guests can enjoy riverside views old and new

This fully accessible pier is great for receptions, celebrations or networking events, with two spaces available to hire.

Boasting unrivalled views, the open deck is perfect for summer parties and sunset receptions. There is also a more secluded space, shielded from the river with lots of branding opportunities, making it great for product launches.



**150**

people can be accommodated



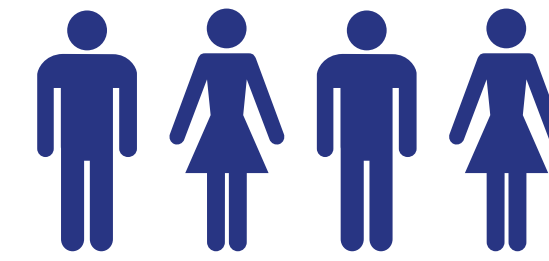
# Our other piers

We have a number of other piers that are ideal for smaller events



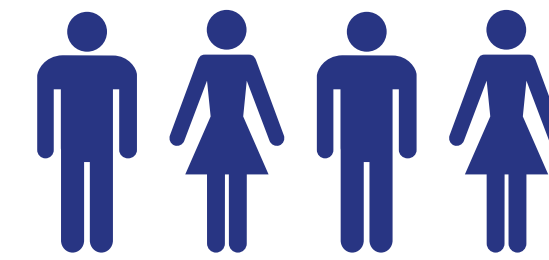
These fully accessible piers offer flexible spaces with some stunning vistas and famous landmarks

### Bankside Pier



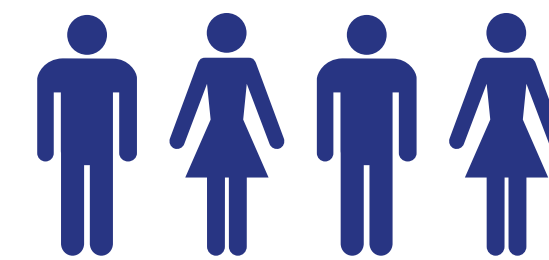
**40**  
people can be accommodated

### Festival Pier



**40**  
people can be accommodated

### Embankment Pier



**20-50**  
people can be accommodated



# Contact us

Want to book one of our spaces? We can put together the perfect deal for you. Contact us today to discuss your needs.



[exclusivehire@tfl.gov.uk](mailto:exclusivehire@tfl.gov.uk)

