

SOUTH KENSINGTON STATION  
AROUND STATION DEVELOPMENT

PELHAM STREET CORNER, FIRST THOUGHTS

18TH MAY 2016

BuckleyGrayYeoman



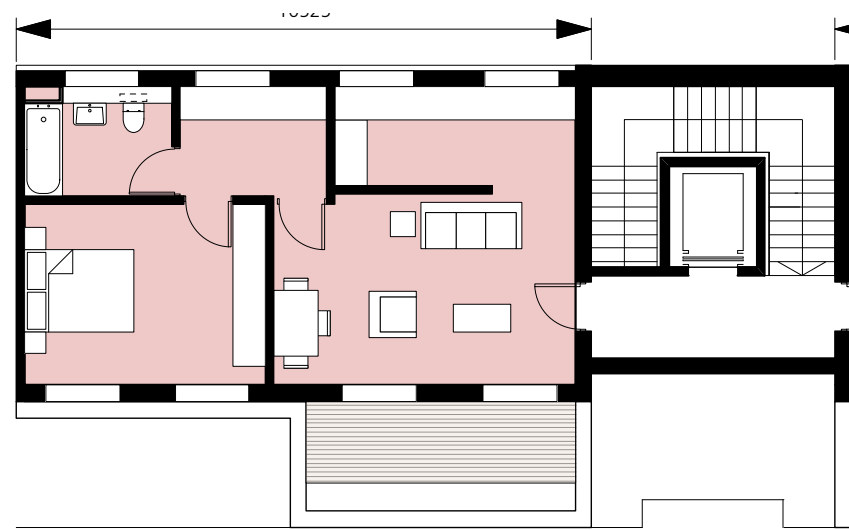
# Pelham Street

## Plan layouts development

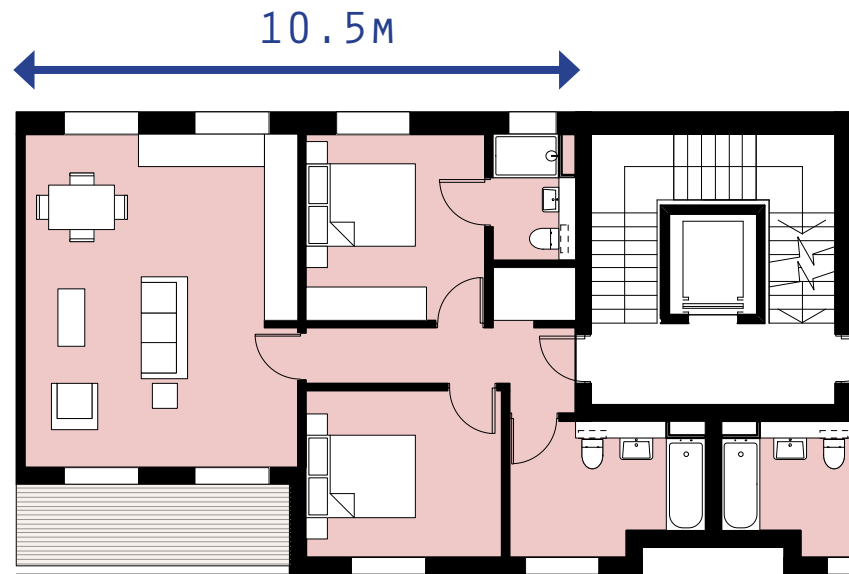
Well proportioned residential apartments

To meet modern standards

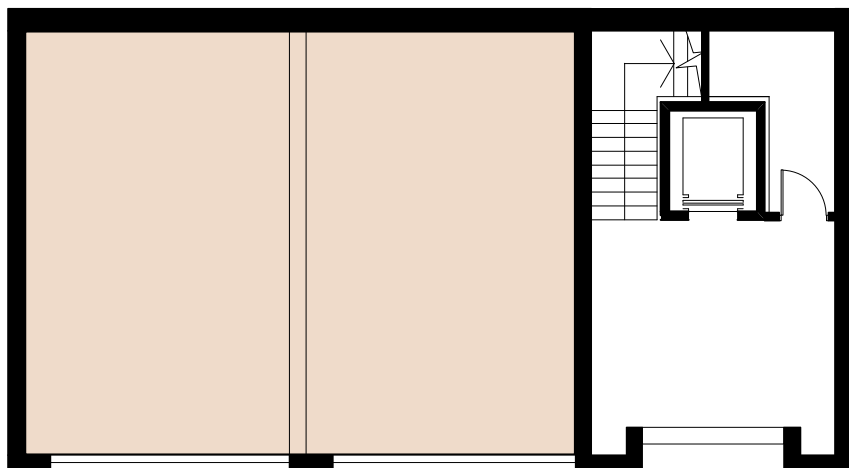
South facing terraces



Set Back Third Floor



First & Second Floor



Ground Floor





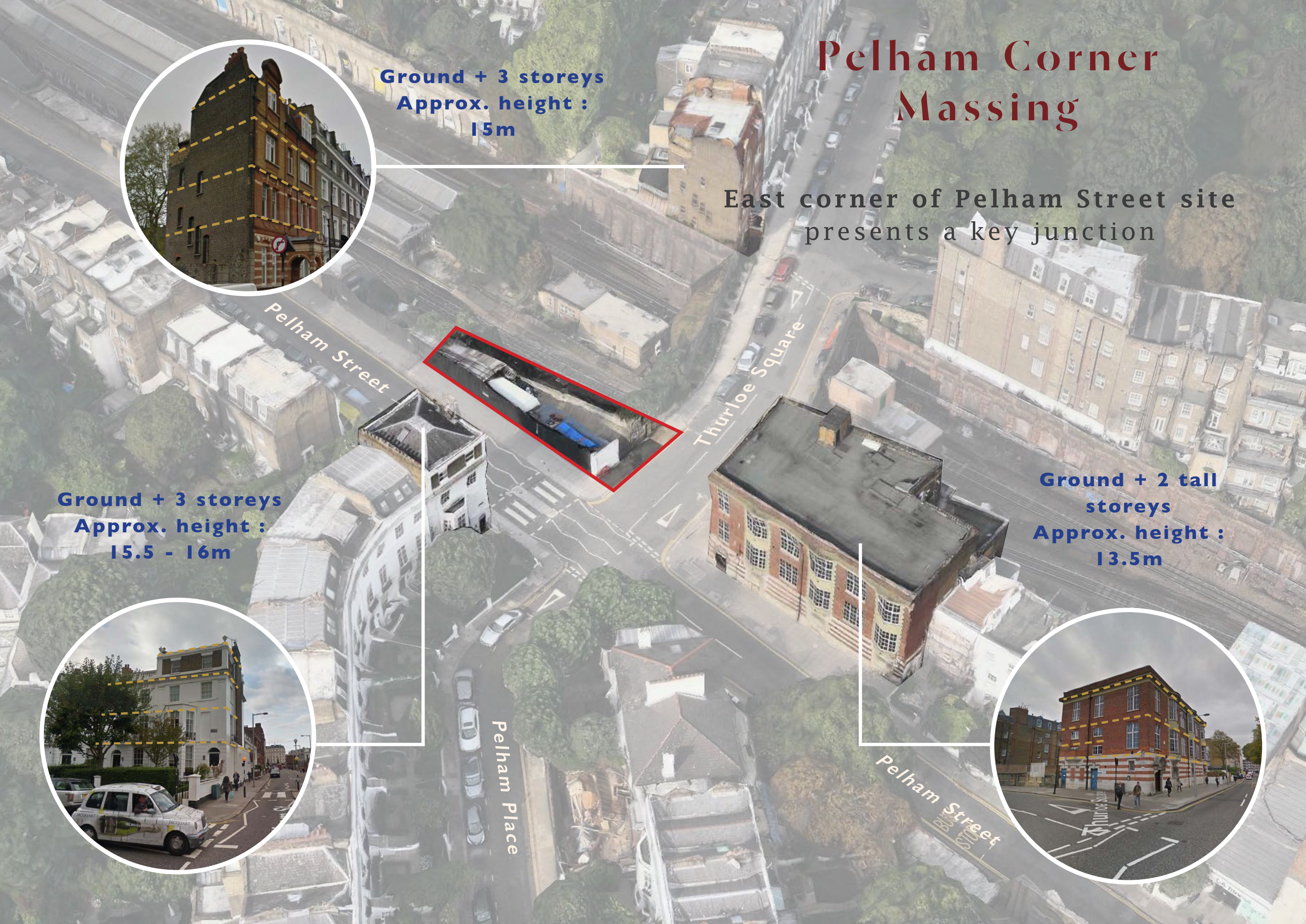
# Pelham Corner Massing

Ground + 3 storeys  
Approx. height :  
15m

East corner of Pelham Street site  
presents a key junction

Ground + 2 tall  
storeys  
Approx. height :  
13.5m

Ground + 3 storeys  
Approx. height :  
15.5 - 16m

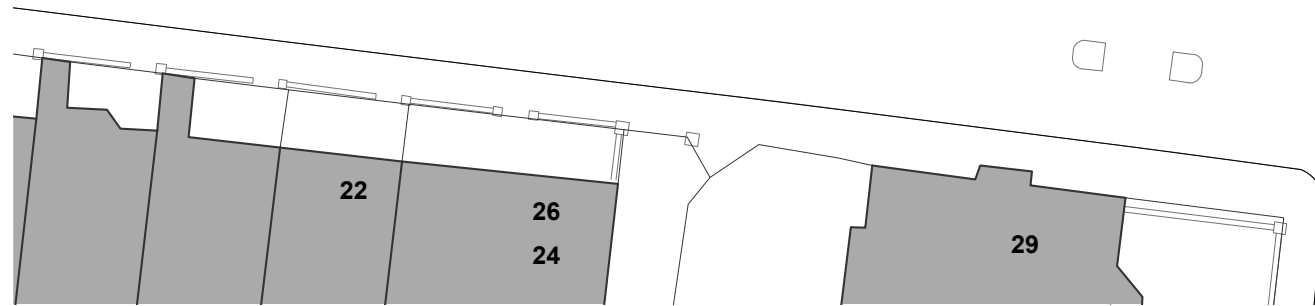
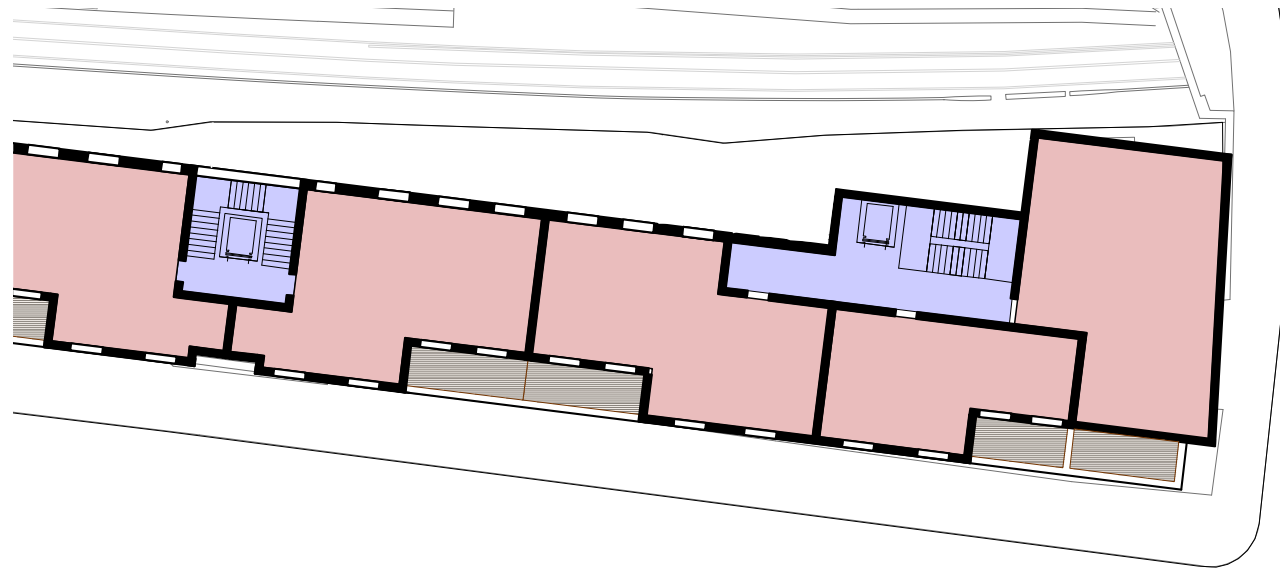




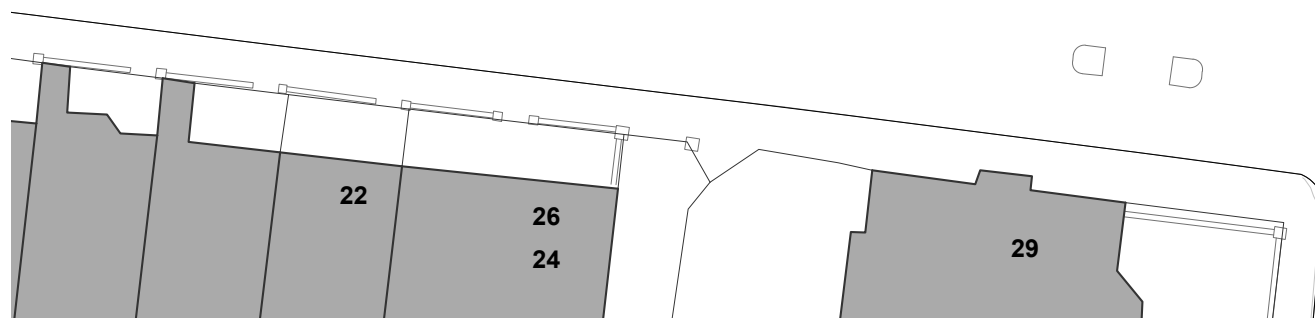
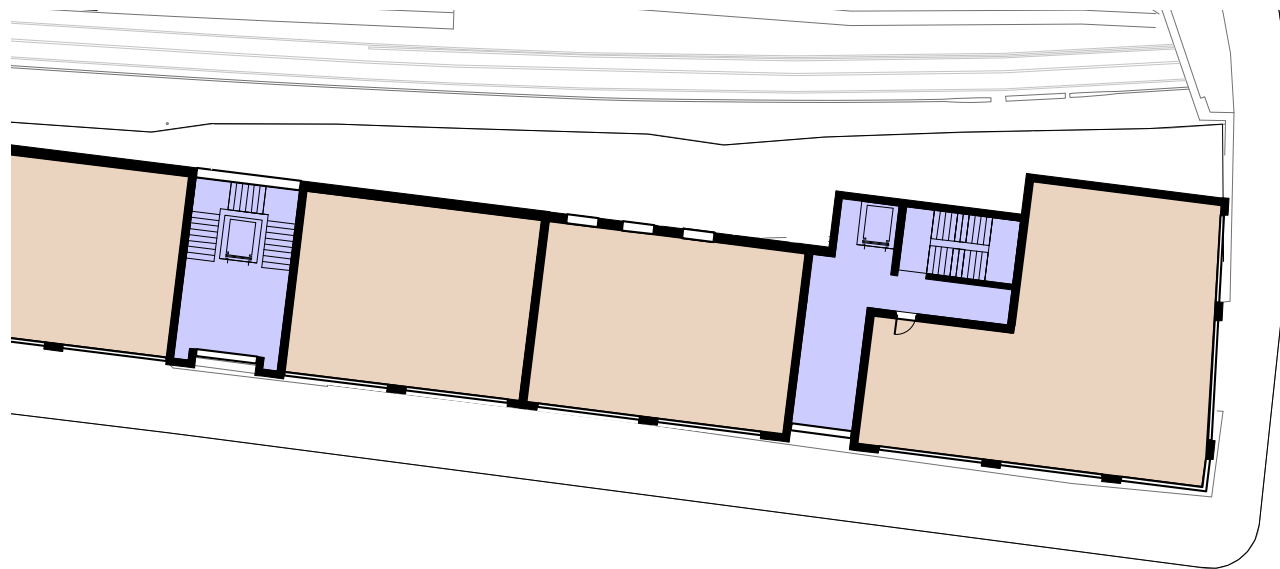
# Base Option 1

Retail at ground floor  
3 storeys apartments above

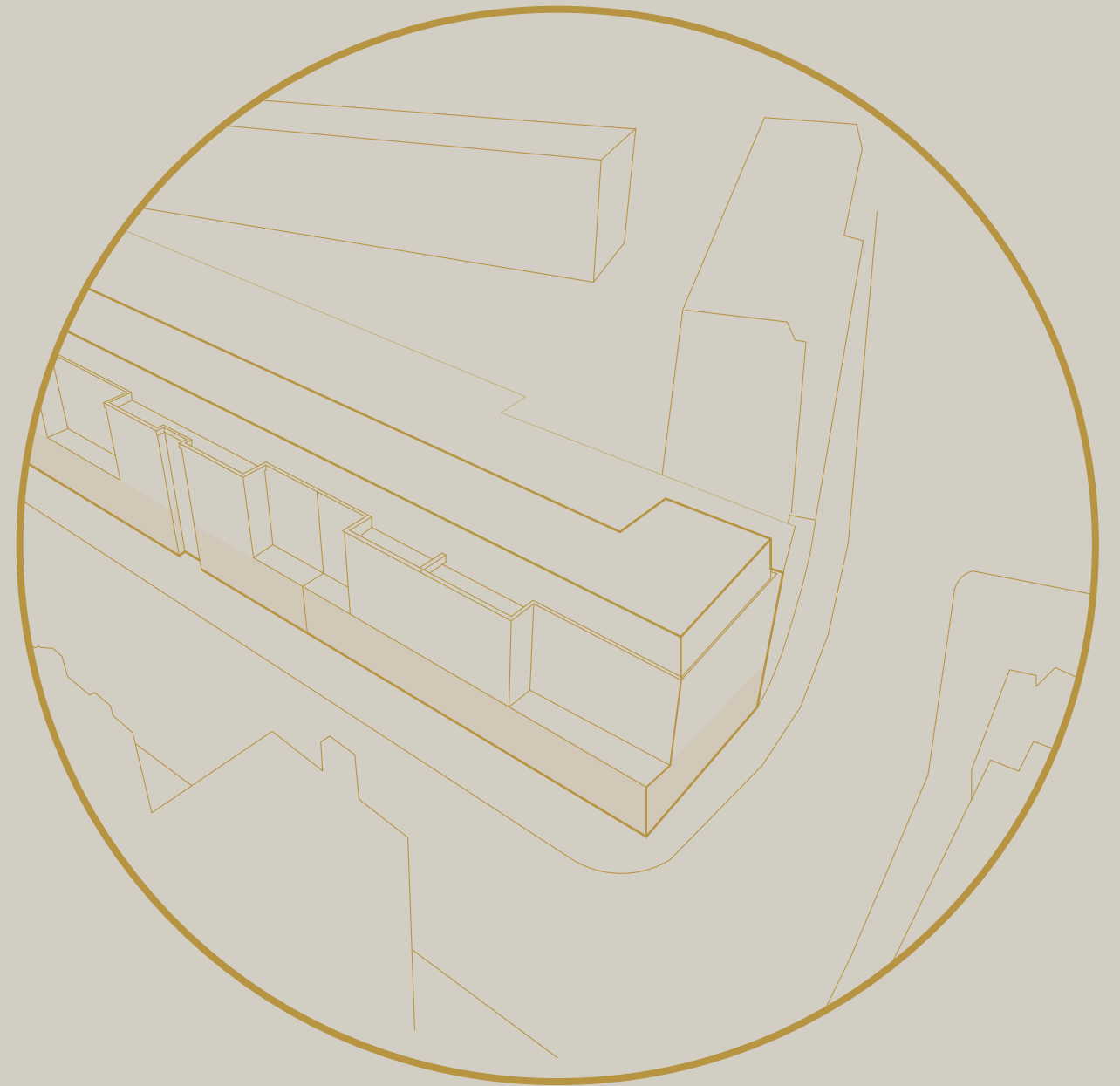
Continuation of proposals  
along Pelham Street



Proposed Upper Floor



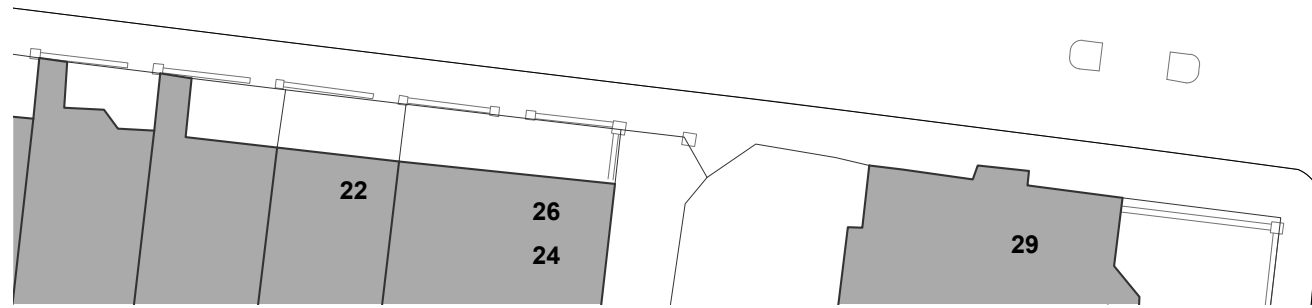
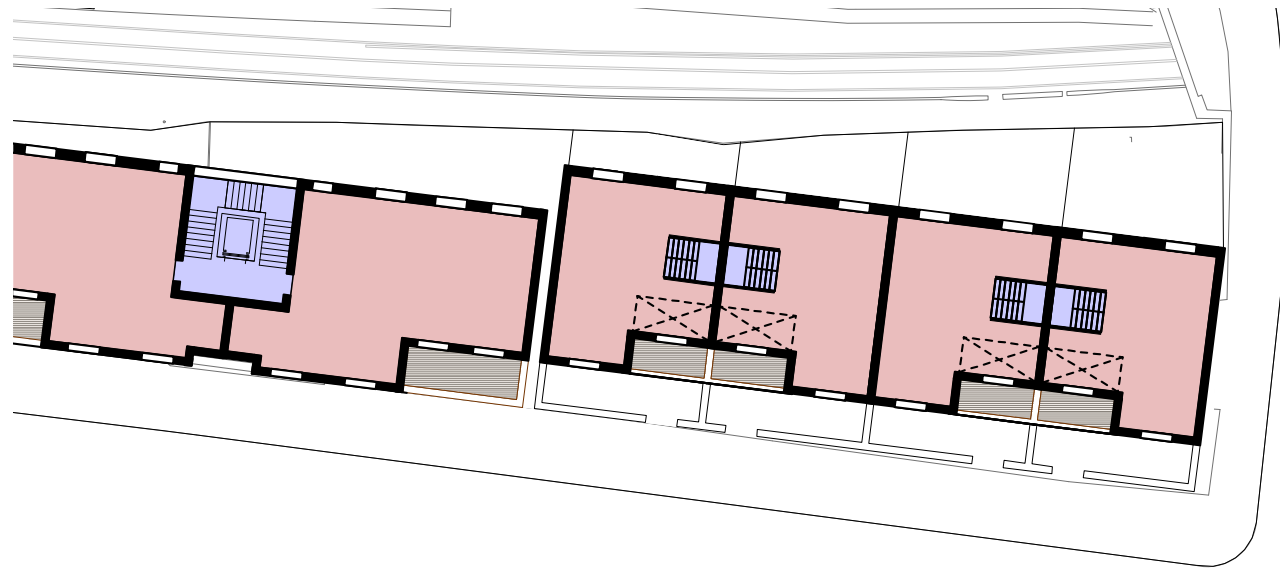
Proposed Ground Floor



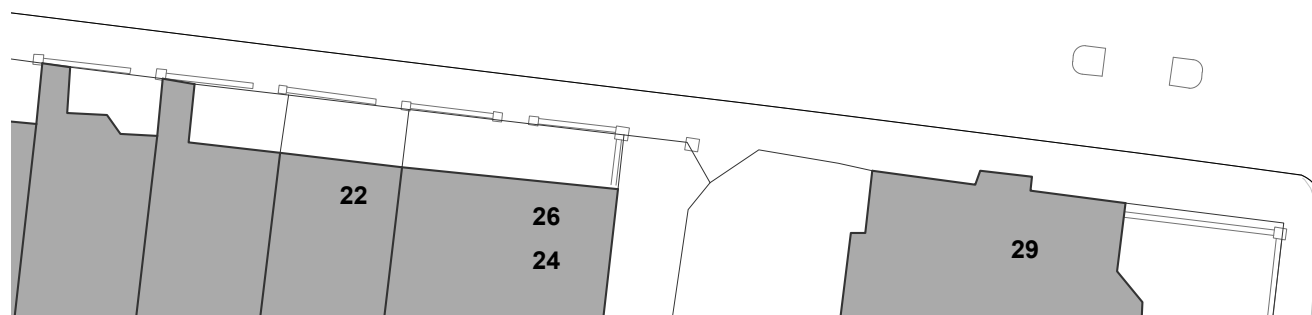
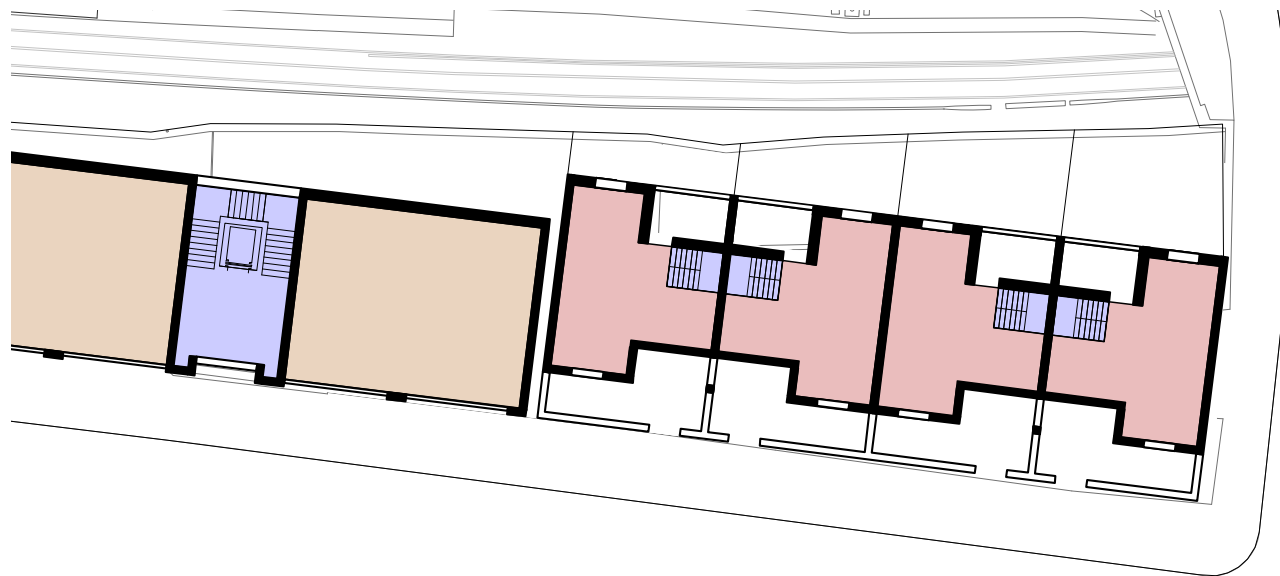
# Option 2

## 4 Storey Townhouses

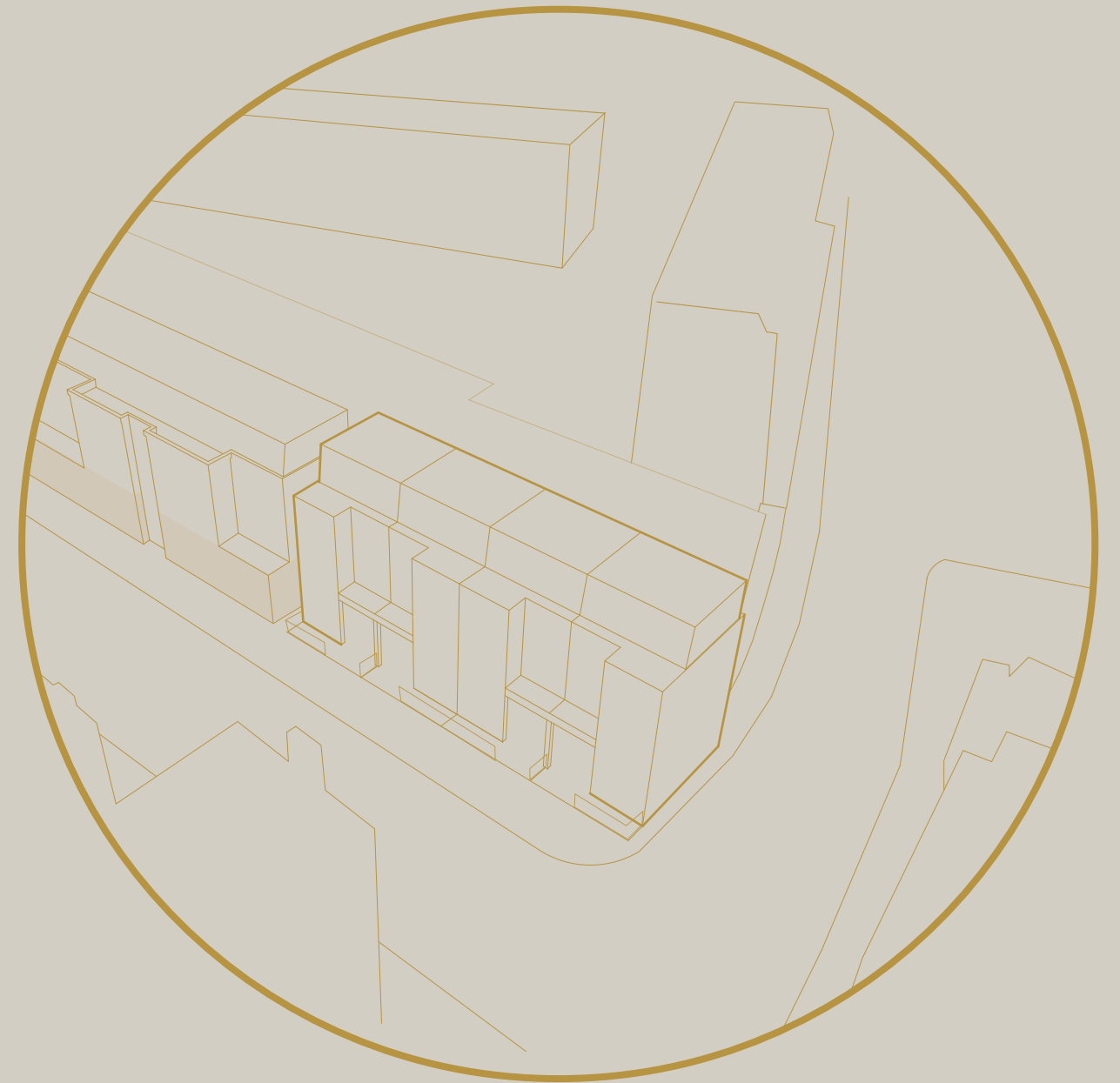
to east end of Pelham Street



Proposed Upper Floor

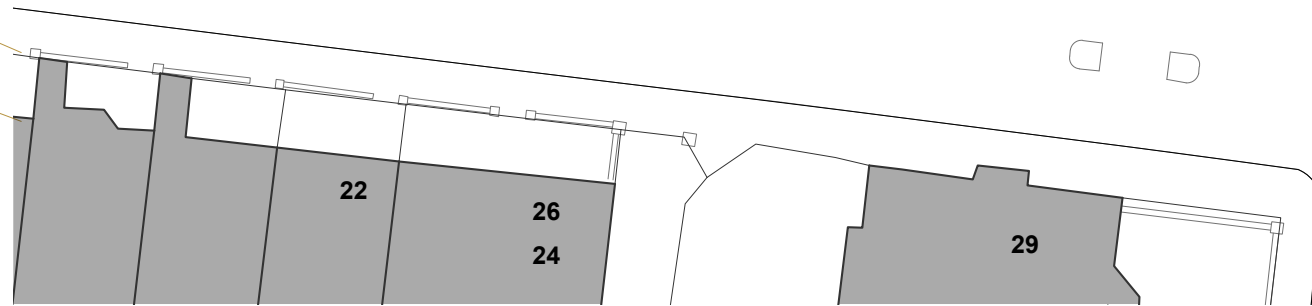
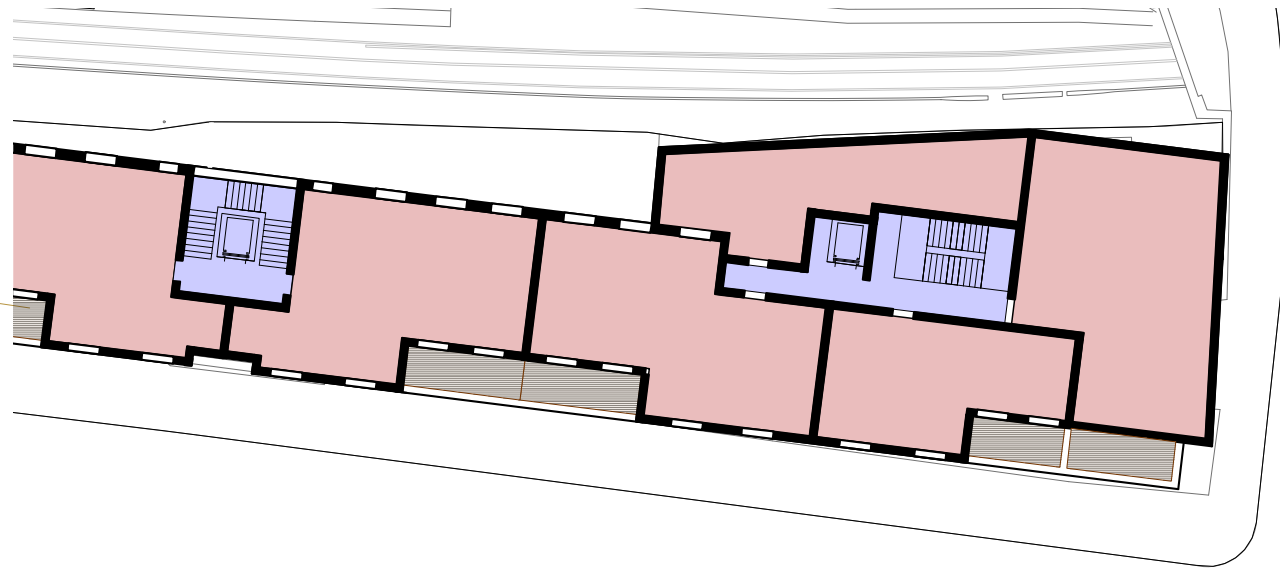


Proposed Ground Floor

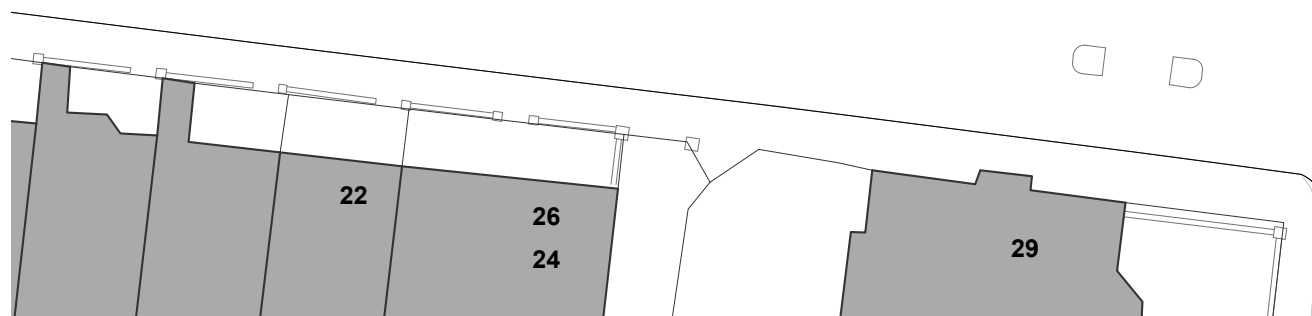
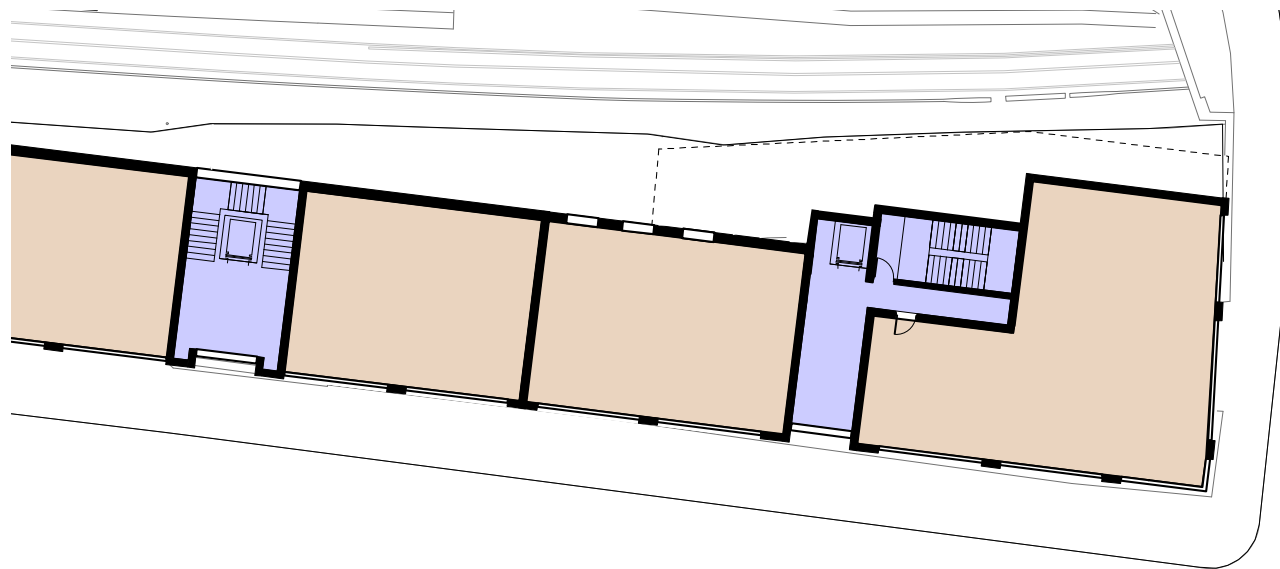


# Option 3

Retail at ground floor  
4 storeys apartments above  
to east end of Pelham Street



Proposed Upper Floor



Proposed Ground Floor

