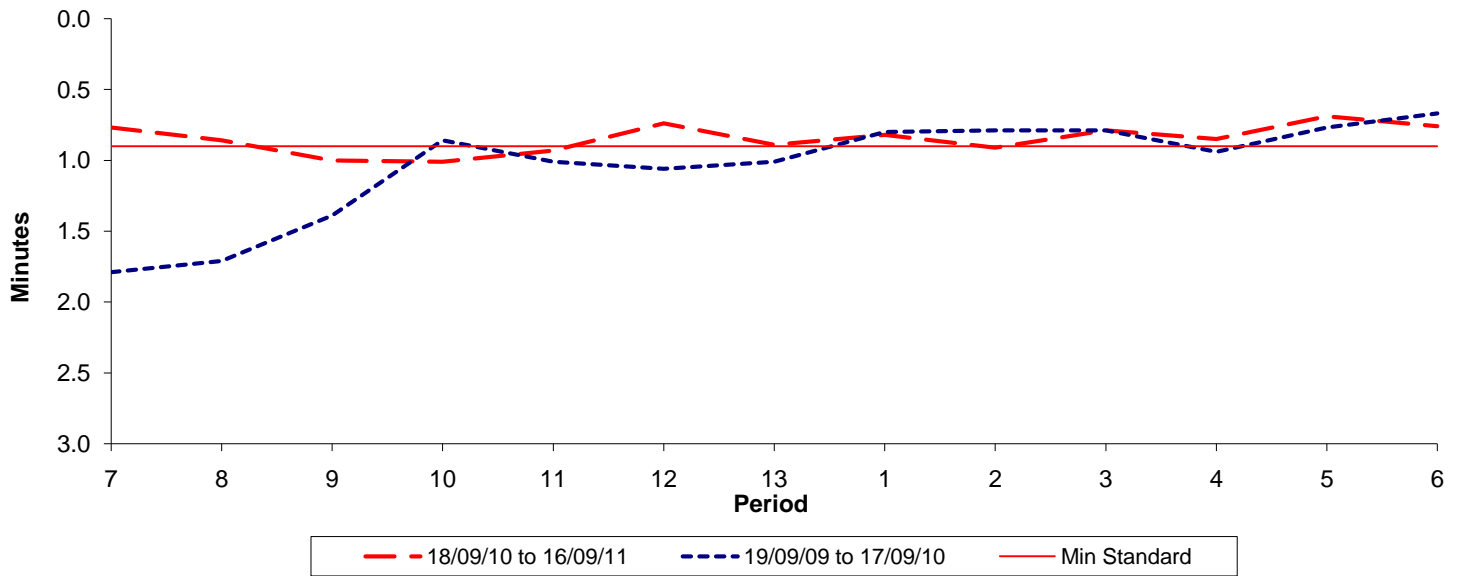




Reliability Performance (High Frequency)

Excess Waiting Time (minutes)

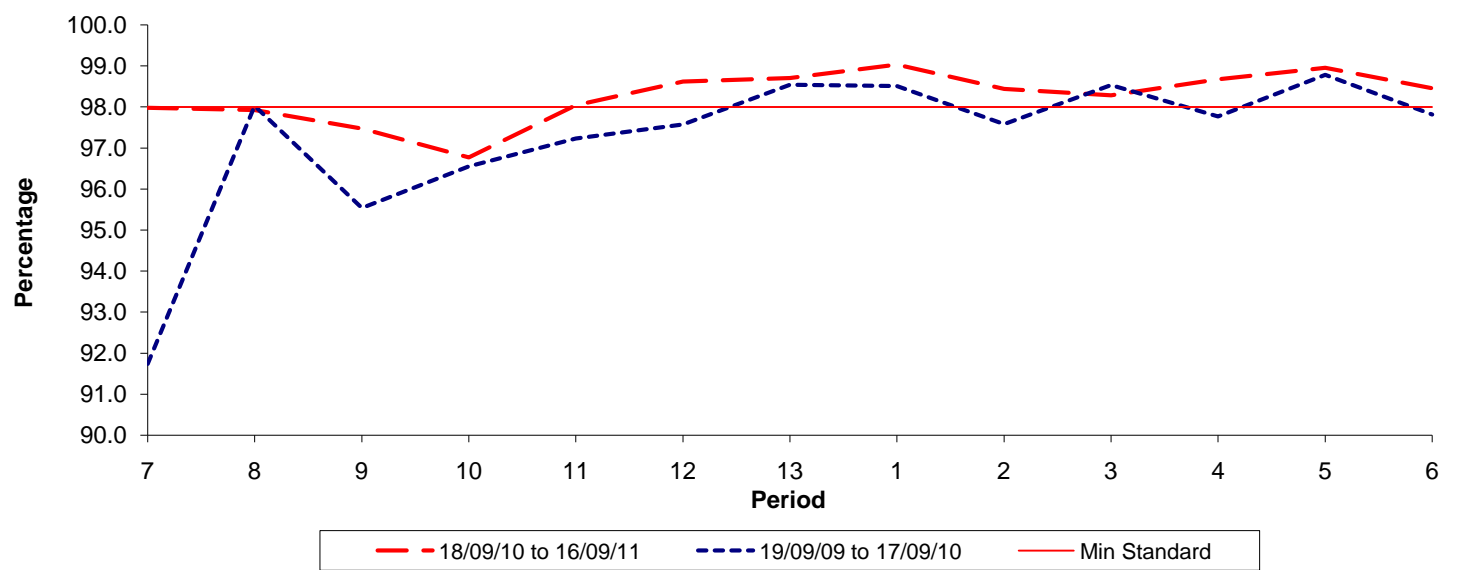


Date Range / Period	7	8	9	10	11	12	13	1	2	3	4	5	6
18/09/10 to 16/09/11	0.77	0.86	1.00	1.01	0.93	0.74	0.89	0.82	0.91	0.79	0.85	0.69	0.76
19/09/09 to 17/09/10	1.79	1.71	1.39	0.86	1.01	1.06	1.01	0.80	0.79	0.79	0.94	0.77	0.67
Min Standard	0.90	0.90	0.90	0.90	0.90	0.90	0.90	0.90	0.90	0.90	0.90	0.90	0.90

Excess Waiting Time figures are based on 12 weeks data

Kilometre Performance

% Kilometres Operated



Date Range / Period	7	8	9	10	11	12	13	1	2	3	4	5	6
18/09/10 to 16/09/11	97.98	97.92	97.47	96.77	98.04	98.62	98.70	99.03	98.44	98.28	98.67	98.95	98.45
19/09/09 to 17/09/10	91.74	98.02	95.54	96.55	97.23	97.57	98.54	98.51	97.58	98.53	97.77	98.78	97.81
Min Standard	98.00	98.00	98.00	98.00	98.00	98.00	98.00	98.00	98.00	98.00	98.00	98.00	98.00

Kilometre figures are based on 4 weeks data