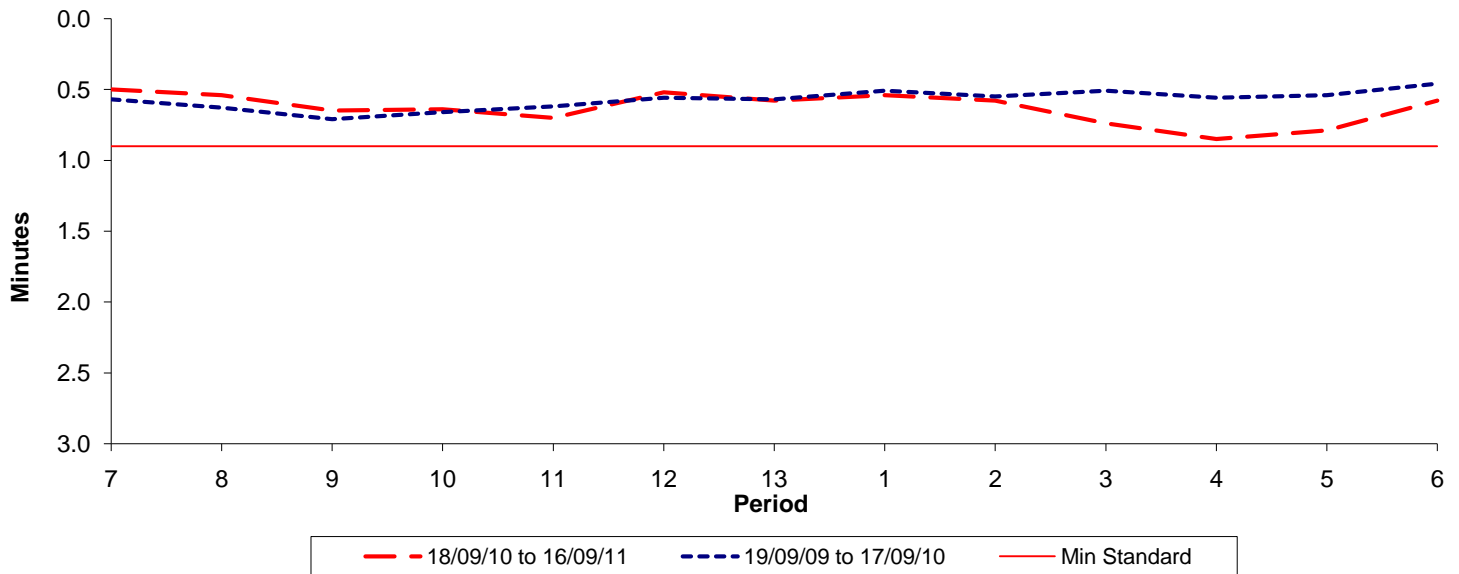




Reliability Performance (High Frequency)

Excess Waiting Time (minutes)

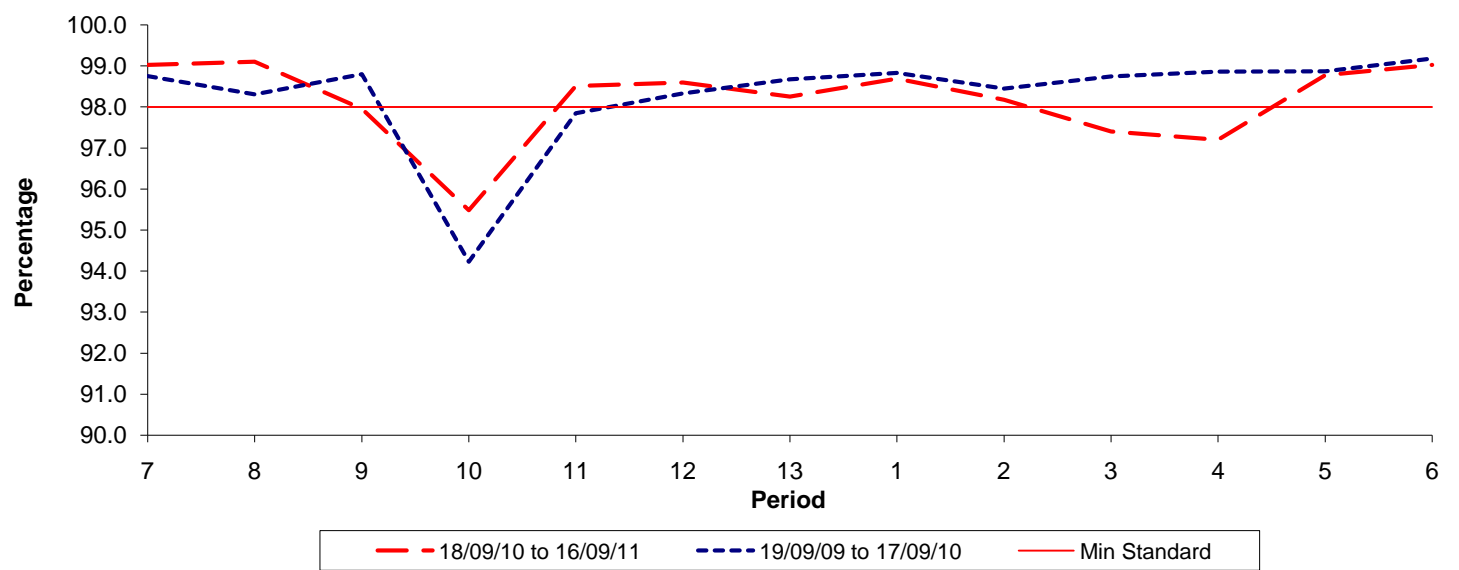


Date Range / Period	7	8	9	10	11	12	13	1	2	3	4	5	6
18/09/10 to 16/09/11	0.50	0.54	0.65	0.64	0.70	0.52	0.58	0.54	0.58	0.74	0.85	0.79	0.58
19/09/09 to 17/09/10	0.57	0.63	0.71	0.66	0.62	0.56	0.57	0.51	0.55	0.51	0.56	0.54	0.46
Min Standard	0.90	0.90	0.90	0.90	0.90	0.90	0.90	0.90	0.90	0.90	0.90	0.90	0.90

Excess Waiting Time figures are based on 12 weeks data

Kilometre Performance

% Kilometres Operated



Date Range / Period	7	8	9	10	11	12	13	1	2	3	4	5	6
18/09/10 to 16/09/11	99.02	99.10	97.95	95.48	98.51	98.59	98.25	98.69	98.17	97.40	97.20	98.77	99.02
19/09/09 to 17/09/10	98.75	98.31	98.80	94.23	97.85	98.33	98.67	98.83	98.45	98.74	98.86	98.87	99.18
Min Standard	98.00	98.00	98.00	98.00	98.00	98.00	98.00	98.00	98.00	98.00	98.00	98.00	98.00

Kilometre figures are based on 4 weeks data