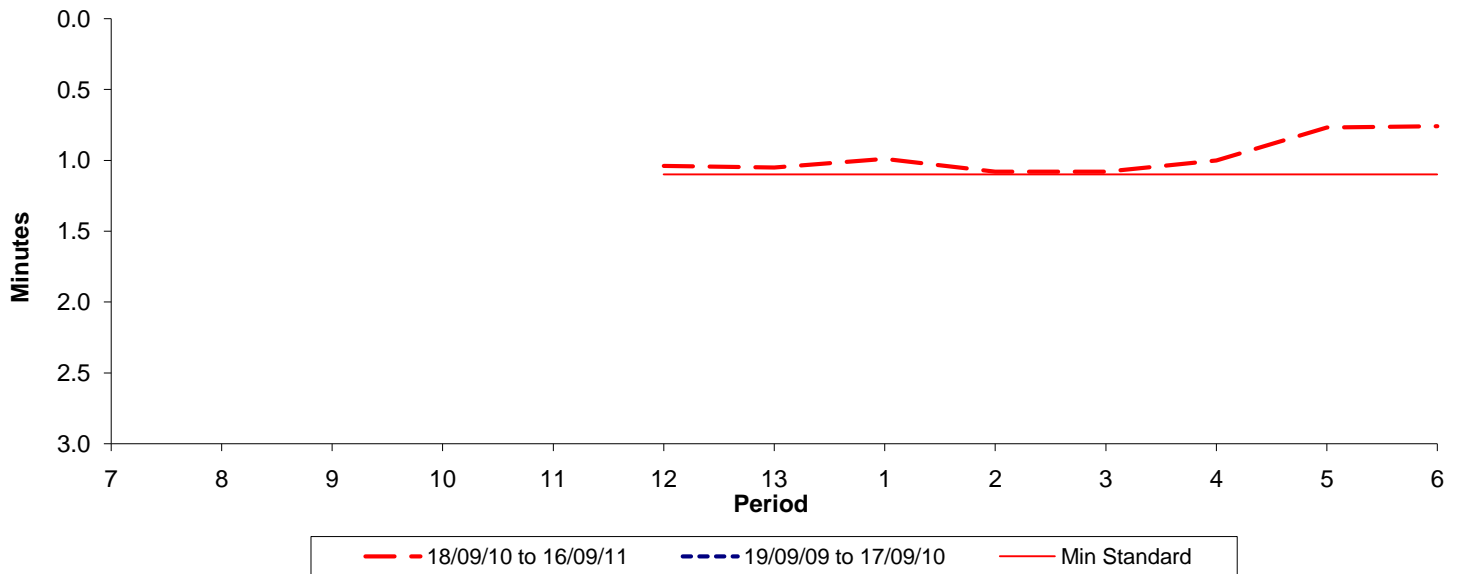




Reliability Performance (High Frequency)

Excess Waiting Time (minutes)

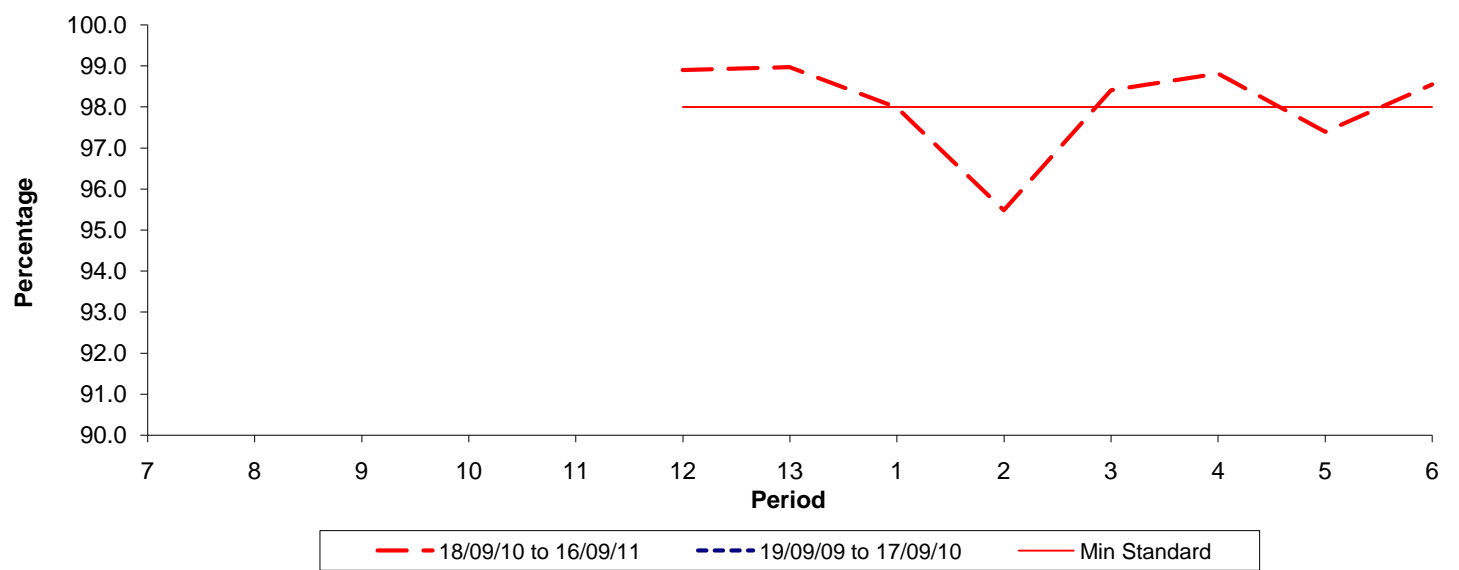


Date Range / Period	7	8	9	10	11	12	13	1	2	3	4	5	6
18/09/10 to 16/09/11						1.04	1.05	0.99	1.08	1.08	1.00	0.77	0.76
19/09/09 to 17/09/10													
Min Standard						1.10	1.10	1.10	1.10	1.10	1.10	1.10	1.10

Excess Waiting Time figures are based on 12 weeks data

Kilometre Performance

% Kilometres Operated



Date Range / Period	7	8	9	10	11	12	13	1	2	3	4	5	6
18/09/10 to 16/09/11						98.90	98.97	97.99	95.48	98.41	98.81	97.39	98.55
19/09/09 to 17/09/10													
Min Standard						98.00	98.00	98.00	98.00	98.00	98.00	98.00	98.00

Kilometre figures are based on 4 weeks data