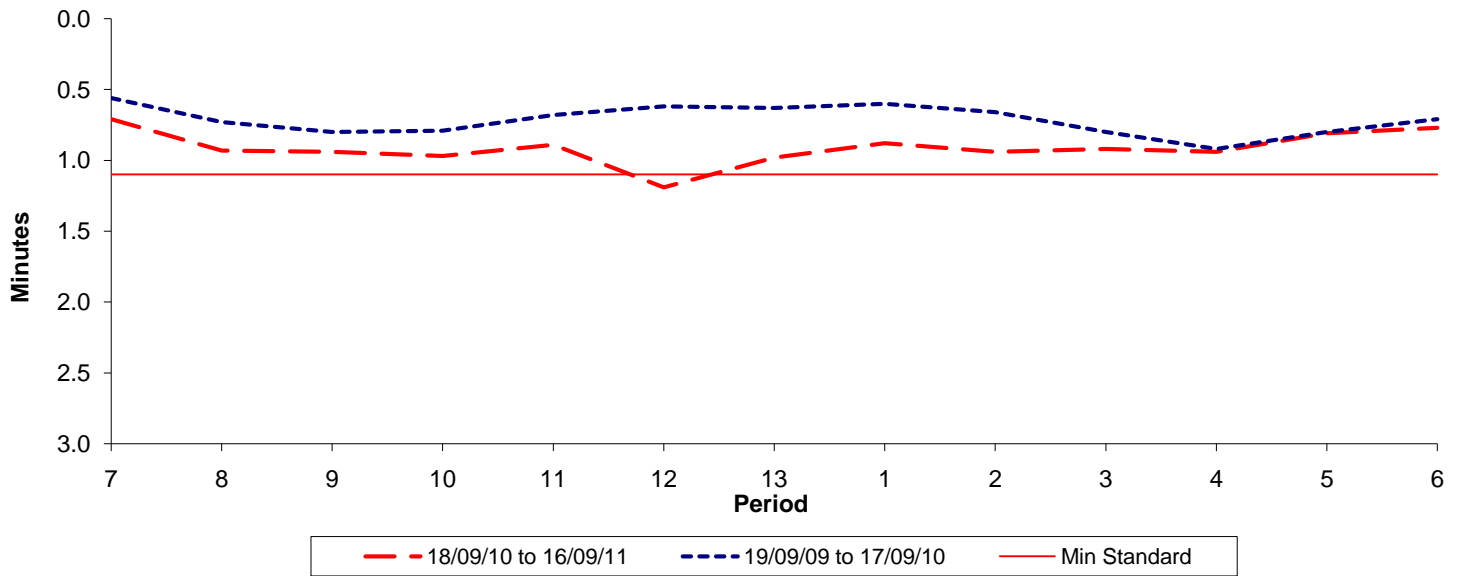




**Reliability Performance ( High Frequency )**

**Excess Waiting Time (minutes)**

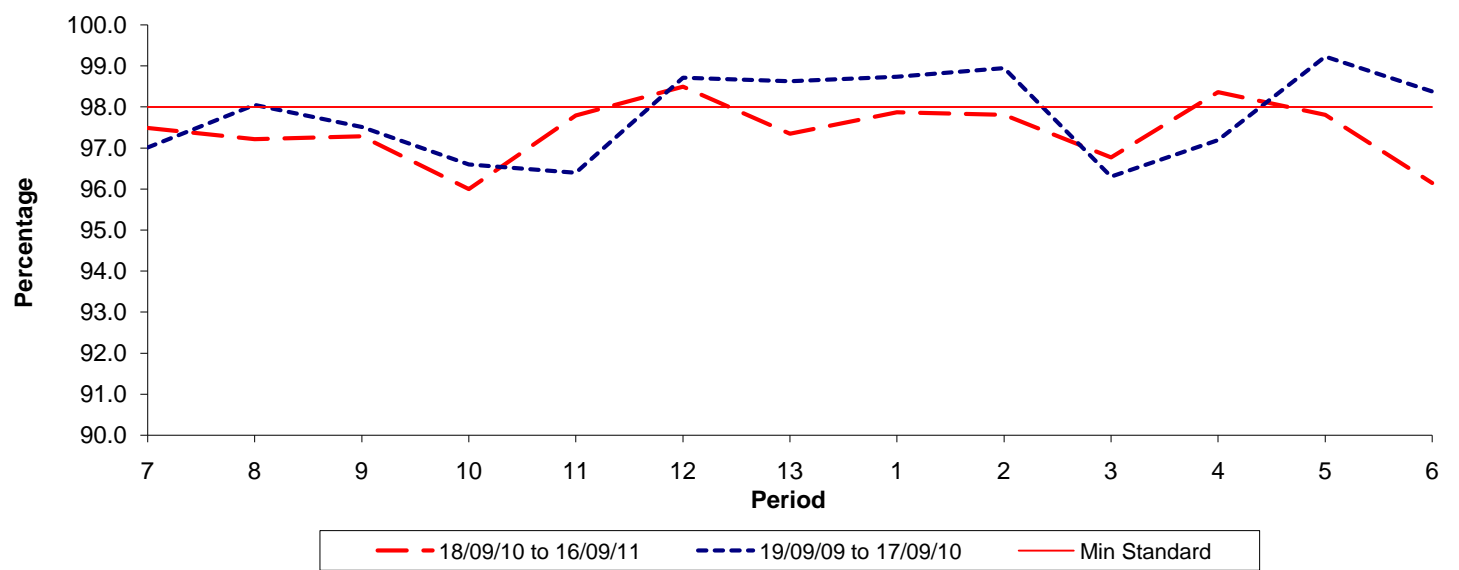


Date Range / Period	7	8	9	10	11	12	13	1	2	3	4	5	6
18/09/10 to 16/09/11	0.71	0.93	0.94	0.97	0.89	1.19	0.98	0.88	0.94	0.92	0.94	0.81	0.77
19/09/09 to 17/09/10	0.56	0.73	0.80	0.79	0.68	0.62	0.63	0.60	0.66	0.80	0.92	0.80	0.71
Min Standard	1.10	1.10	1.10	1.10	1.10	1.10	1.10	1.10	1.10	1.10	1.10	1.10	1.10

Excess Waiting Time figures are based on 12 weeks data

**Kilometre Performance**

**% Kilometres Operated**



Date Range / Period	7	8	9	10	11	12	13	1	2	3	4	5	6
18/09/10 to 16/09/11	97.49	97.22	97.29	96.00	97.79	98.49	97.35	97.87	97.81	96.77	98.36	97.81	96.15
19/09/09 to 17/09/10	97.01	98.05	97.51	96.60	96.40	98.71	98.63	98.74	98.95	96.30	97.19	99.23	98.38
Min Standard	98.00	98.00	98.00	98.00	98.00	98.00	98.00	98.00	98.00	98.00	98.00	98.00	98.00

Kilometre figures are based on 4 weeks data