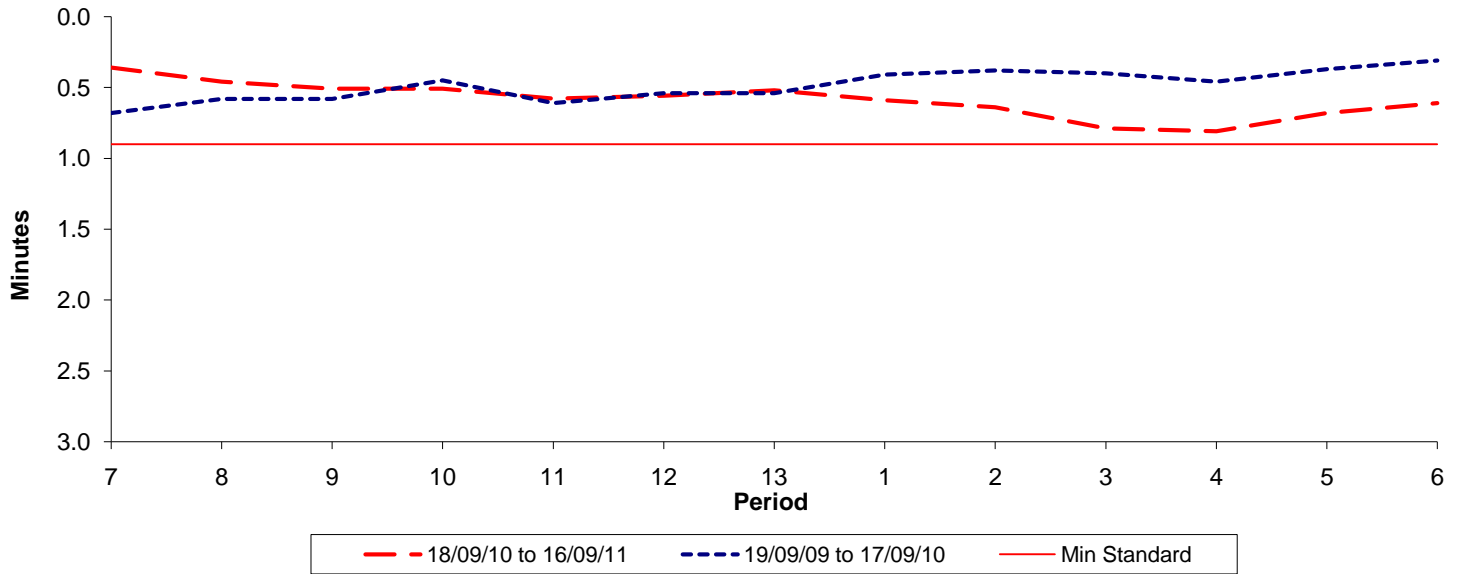




Reliability Performance (High Frequency)

Excess Waiting Time (minutes)

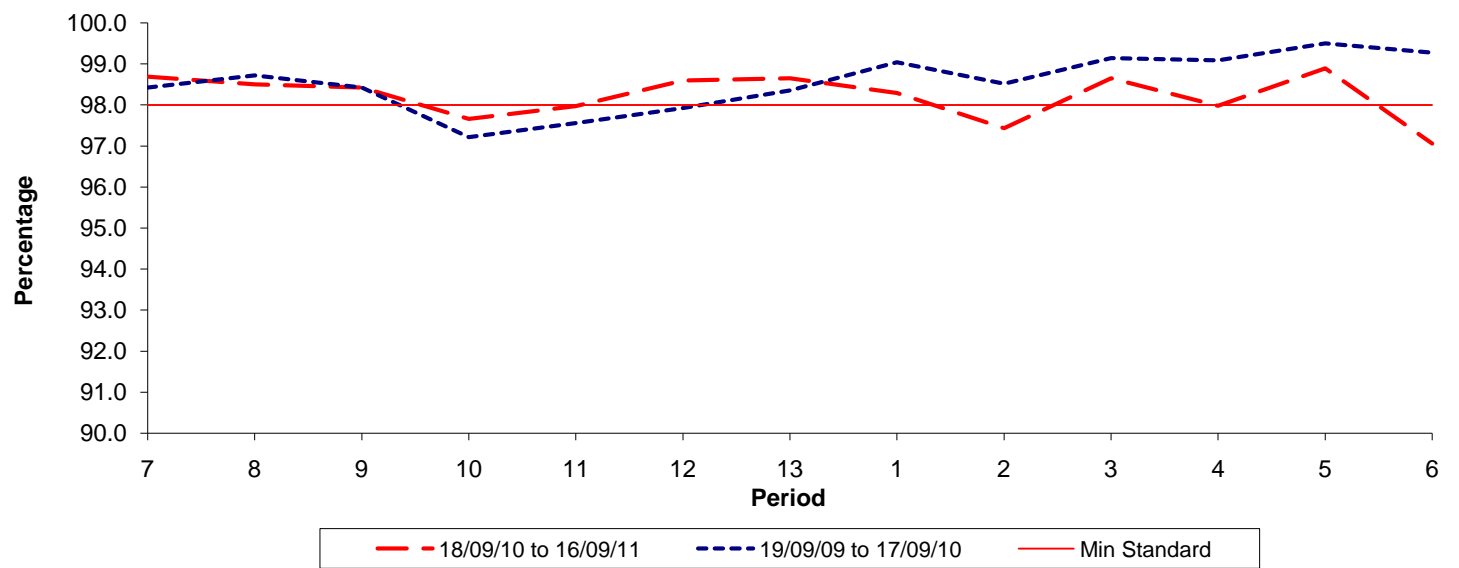


| Date Range / Period | 7 | 8 | 9 | 10 | 11 | 12 | 13 | 1 | 2 | 3 | 4 | 5 | 6 |
|----------------------|------|------|------|------|------|------|------|------|------|------|------|------|------|
| 18/09/10 to 16/09/11 | 0.36 | 0.46 | 0.51 | 0.51 | 0.58 | 0.56 | 0.52 | 0.59 | 0.64 | 0.79 | 0.81 | 0.68 | 0.61 |
| 19/09/09 to 17/09/10 | 0.68 | 0.58 | 0.58 | 0.45 | 0.61 | 0.54 | 0.54 | 0.41 | 0.38 | 0.40 | 0.46 | 0.37 | 0.31 |
| Min Standard | 0.90 | 0.90 | 0.90 | 0.90 | 0.90 | 0.90 | 0.90 | 0.90 | 0.90 | 0.90 | 0.90 | 0.90 | 0.90 |

Excess Waiting Time figures are based on 12 weeks data

Kilometre Performance

% Kilometres Operated



| Date Range / Period | 7 | 8 | 9 | 10 | 11 | 12 | 13 | 1 | 2 | 3 | 4 | 5 | 6 |
|----------------------|-------|-------|-------|-------|-------|-------|-------|-------|-------|-------|-------|-------|-------|
| 18/09/10 to 16/09/11 | 98.69 | 98.50 | 98.42 | 97.66 | 97.97 | 98.60 | 98.65 | 98.29 | 97.43 | 98.65 | 97.98 | 98.89 | 97.06 |
| 19/09/09 to 17/09/10 | 98.42 | 98.72 | 98.42 | 97.21 | 97.55 | 97.92 | 98.35 | 99.04 | 98.52 | 99.14 | 99.09 | 99.50 | 99.27 |
| Min Standard | 98.00 | 98.00 | 98.00 | 98.00 | 98.00 | 98.00 | 98.00 | 98.00 | 98.00 | 98.00 | 98.00 | 98.00 | 98.00 |

Kilometre figures are based on 4 weeks data