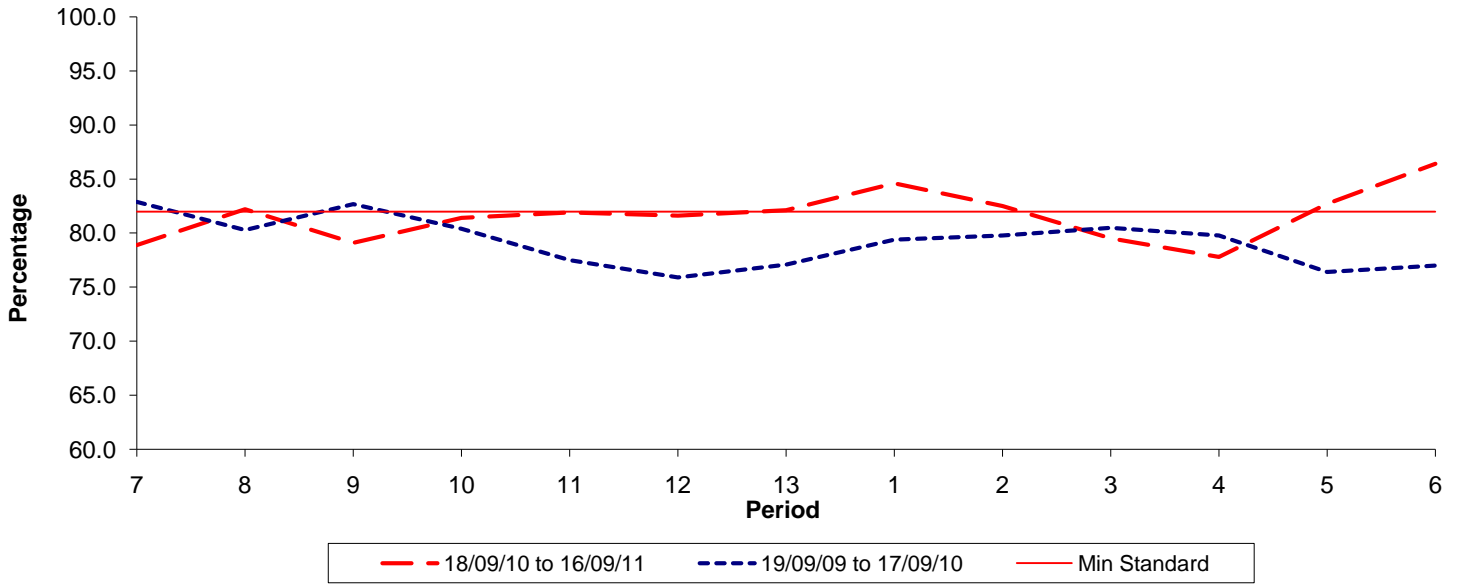




**Reliability Performance ( Low Frequency )**

**% Departing On Time**

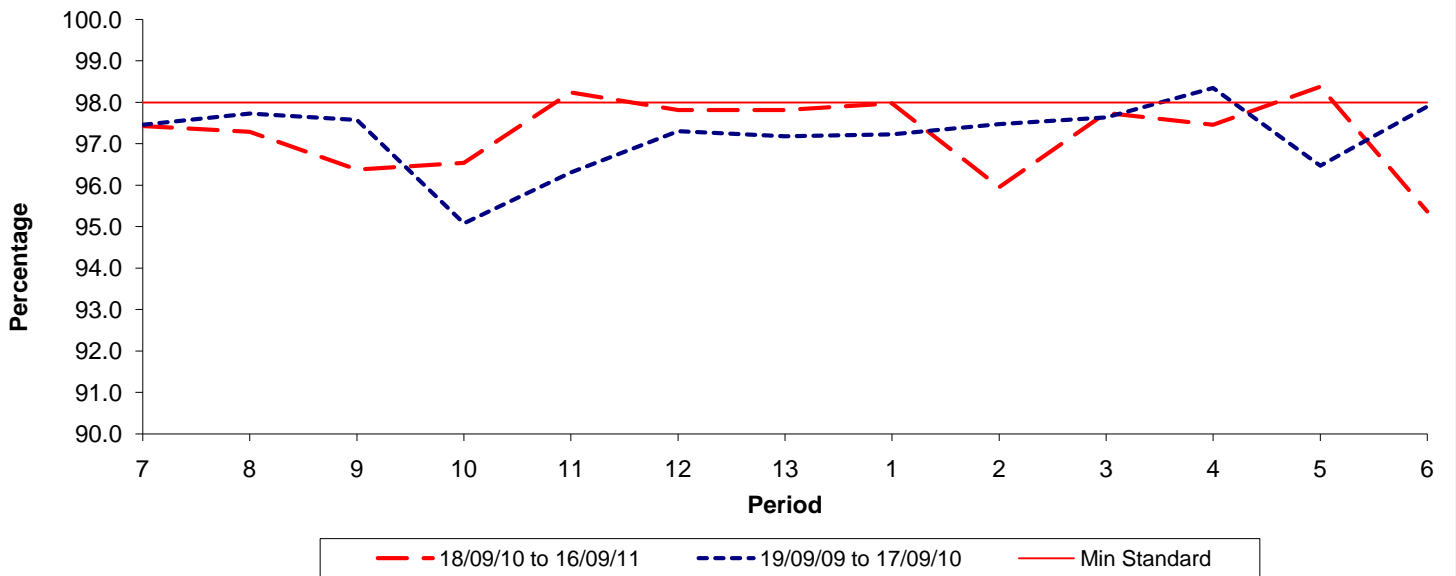


Date Range / Period	7	8	9	10	11	12	13	1	2	3	4	5	6
18/09/10 to 16/09/11	78.90	82.20	79.10	81.40	81.90	81.60	82.10	84.60	82.50	79.50	77.80	82.70	86.40
19/09/09 to 17/09/10	82.90	80.30	82.70	80.40	77.50	75.90	77.10	79.40	79.80	80.50	79.80	76.40	77.00
Min Standard	82.00	82.00	82.00	82.00	82.00	82.00	82.00	82.00	82.00	82.00	82.00	82.00	82.00

On Time figures are based on 12 weeks data

**Kilometre Performance**

**% Kilometres Operated**



Date Range / Period	7	8	9	10	11	12	13	1	2	3	4	5	6
18/09/10 to 16/09/11	97.43	97.29	96.38	96.54	98.24	97.82	97.82	97.98	95.96	97.75	97.46	98.38	95.37
19/09/09 to 17/09/10	97.46	97.73	97.58	95.08	96.31	97.31	97.18	97.23	97.48	97.64	98.35	96.47	97.90
Min Standard	98.00	98.00	98.00	98.00	98.00	98.00	98.00	98.00	98.00	98.00	98.00	98.00	98.00

Kilometre figures are based on 4 weeks data