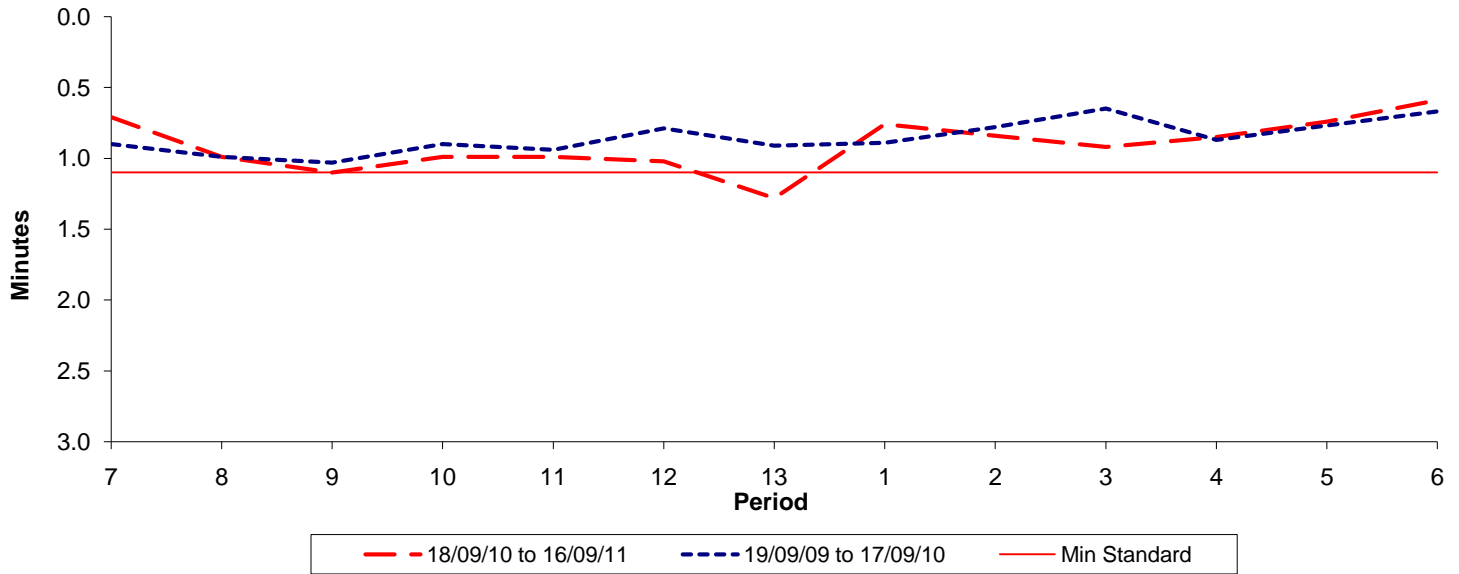




Reliability Performance (High Frequency)

Excess Waiting Time (minutes)

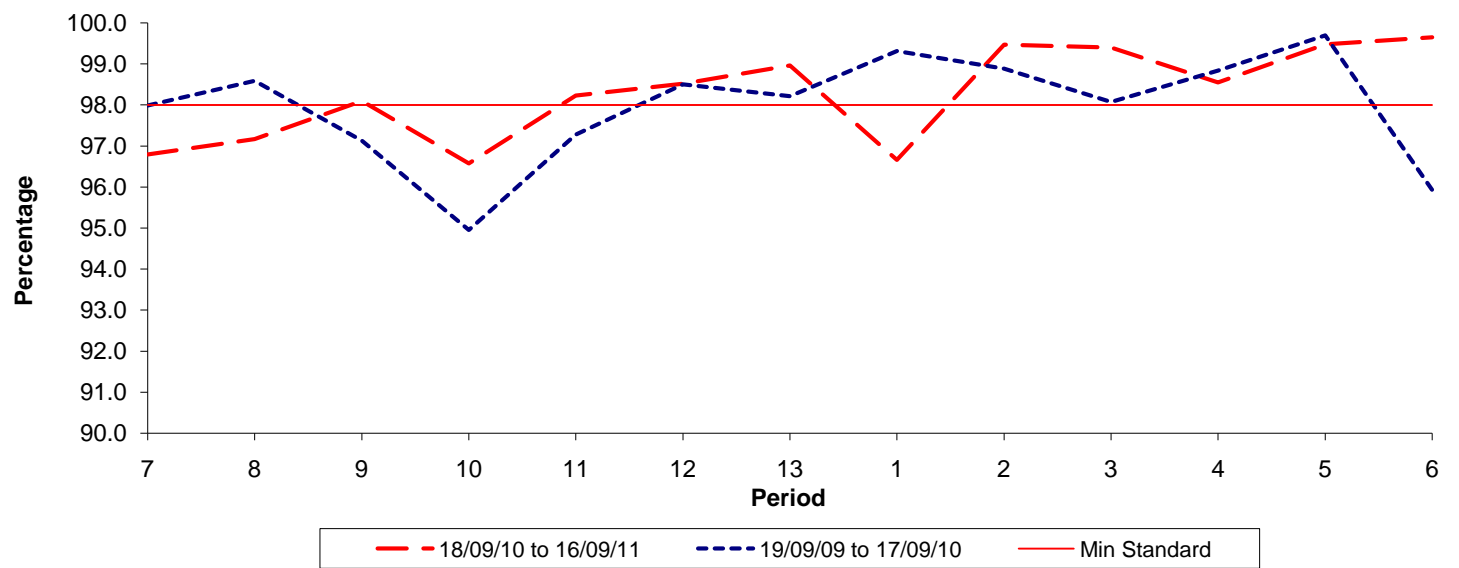


Date Range / Period	7	8	9	10	11	12	13	1	2	3	4	5	6
18/09/10 to 16/09/11	0.71	0.99	1.10	0.99	0.99	1.02	1.28	0.76	0.84	0.92	0.85	0.74	0.59
19/09/09 to 17/09/10	0.90	0.99	1.03	0.90	0.94	0.79	0.91	0.89	0.78	0.65	0.87	0.77	0.67
Min Standard	1.10	1.10	1.10	1.10	1.10	1.10	1.10	1.10	1.10	1.10	1.10	1.10	1.10

Excess Waiting Time figures are based on 12 weeks data

Kilometre Performance

% Kilometres Operated



Date Range / Period	7	8	9	10	11	12	13	1	2	3	4	5	6
18/09/10 to 16/09/11	96.80	97.17	98.10	96.58	98.23	98.52	98.96	96.66	99.47	99.40	98.55	99.48	99.65
19/09/09 to 17/09/10	97.99	98.59	97.13	94.95	97.28	98.50	98.21	99.32	98.88	98.07	98.84	99.69	95.93
Min Standard	98.00	98.00	98.00	98.00	98.00	98.00	98.00	98.00	98.00	98.00	98.00	98.00	98.00

Kilometre figures are based on 4 weeks data