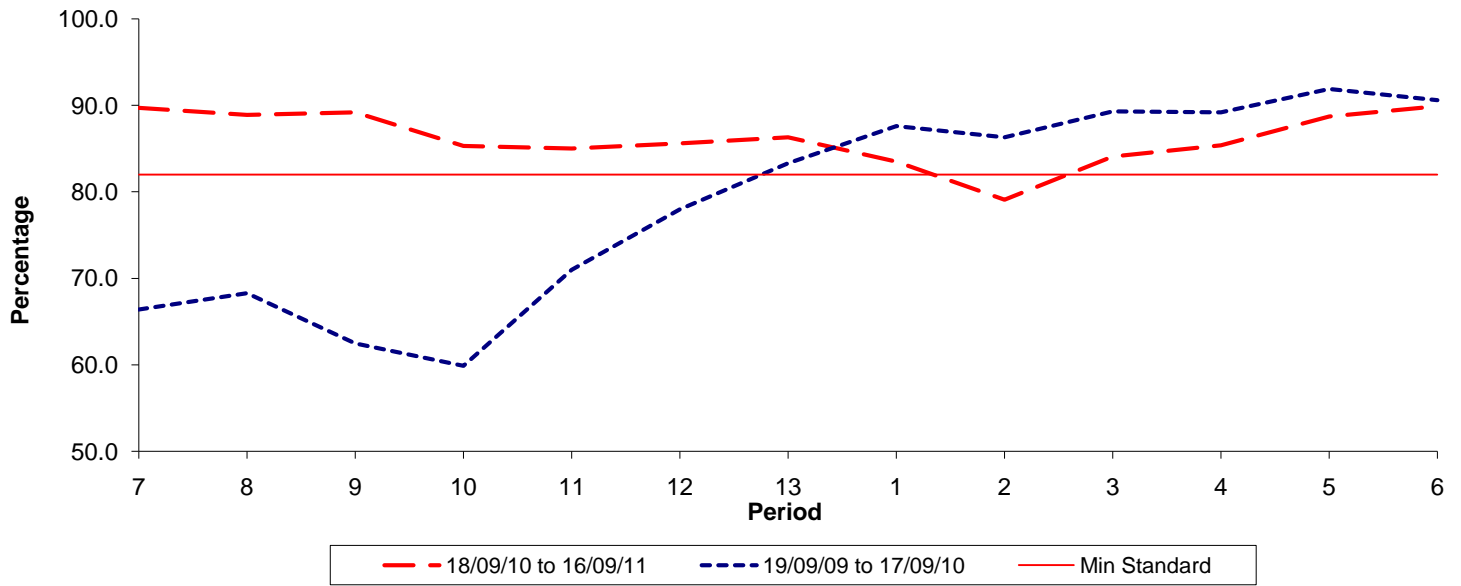




**Reliability Performance ( Low Frequency )**

**% Departing On Time**

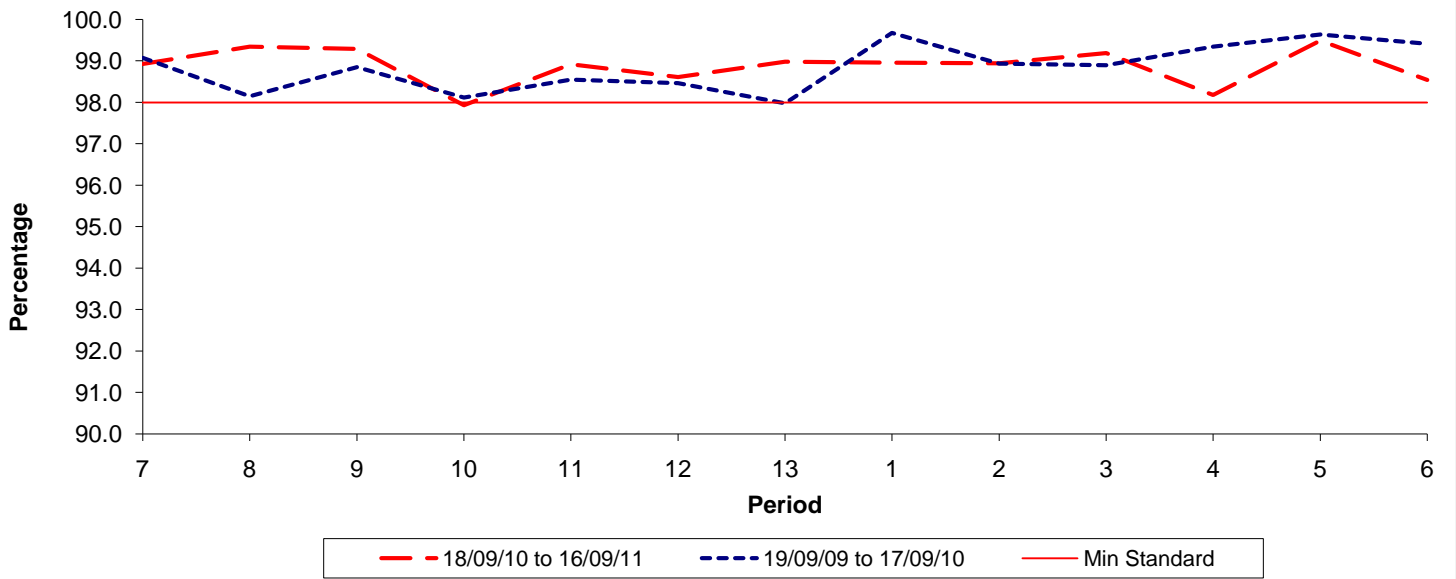


Date Range / Period	7	8	9	10	11	12	13	1	2	3	4	5	6
18/09/10 to 16/09/11	89.70	88.90	89.20	85.30	85.00	85.60	86.30	83.50	79.10	84.10	85.40	88.70	89.90
19/09/09 to 17/09/10	66.40	68.30	62.50	59.90	71.00	78.00	83.30	87.60	86.30	89.30	89.20	91.90	90.60
Min Standard	82.00	82.00	82.00	82.00	82.00	82.00	82.00	82.00	82.00	82.00	82.00	82.00	82.00

On Time figures are based on 12 weeks data

**Kilometre Performance**

**% Kilometres Operated**



Date Range / Period	7	8	9	10	11	12	13	1	2	3	4	5	6
18/09/10 to 16/09/11	98.93	99.34	99.29	97.93	98.92	98.61	98.98	98.96	98.94	99.19	98.18	99.49	98.54
19/09/09 to 17/09/10	99.08	98.15	98.85	98.12	98.55	98.47	97.98	99.68	98.94	98.90	99.35	99.64	99.42
Min Standard	98.00	98.00	98.00	98.00	98.00	98.00	98.00	98.00	98.00	98.00	98.00	98.00	98.00

Kilometre figures are based on 4 weeks data