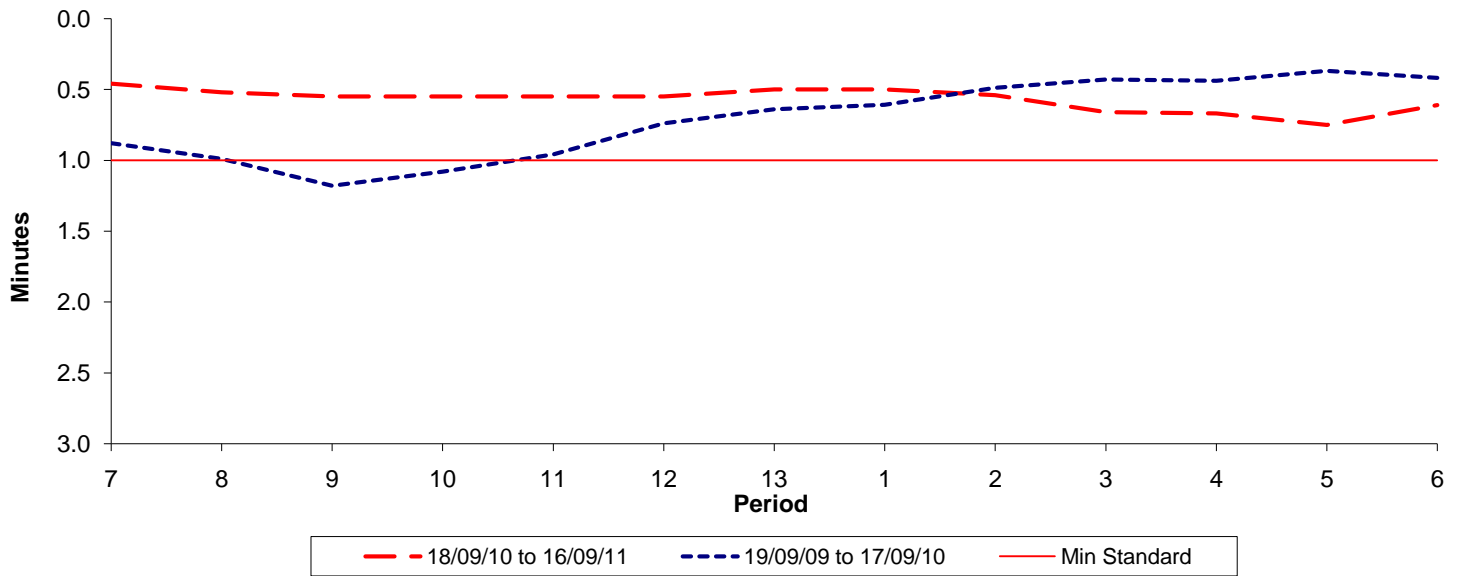




**Reliability Performance ( High Frequency )**

**Excess Waiting Time (minutes)**

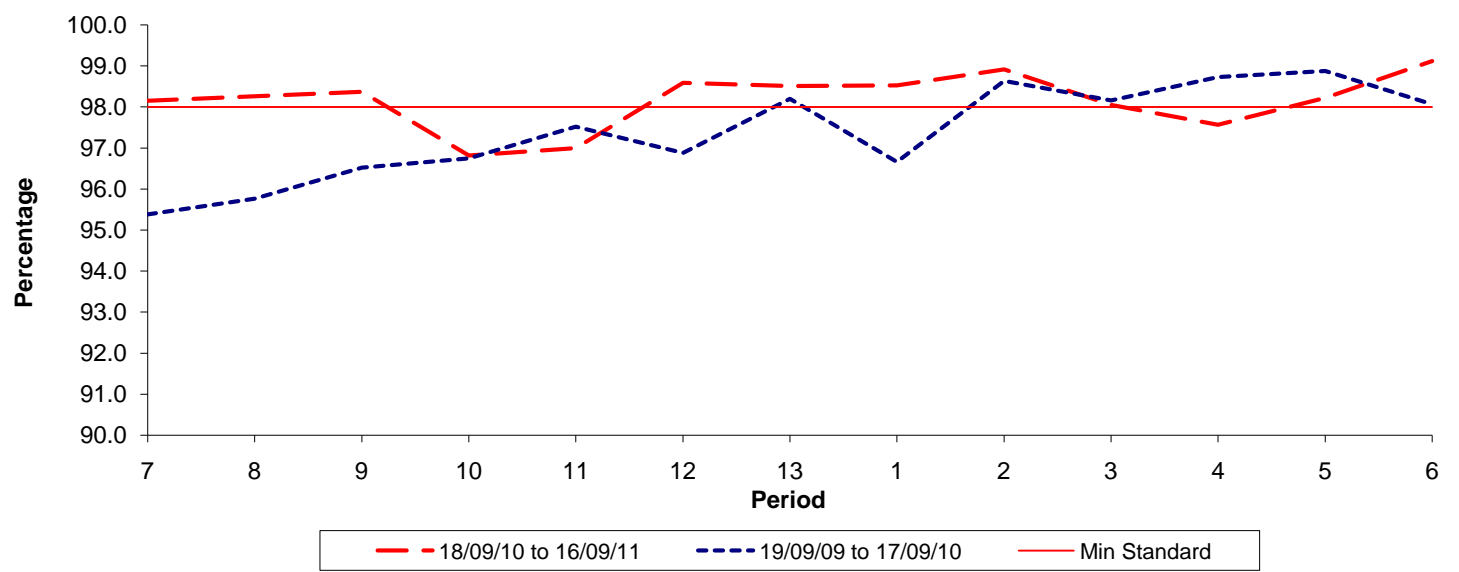


Date Range / Period	7	8	9	10	11	12	13	1	2	3	4	5	6
18/09/10 to 16/09/11	0.46	0.52	0.55	0.55	0.55	0.55	0.50	0.50	0.54	0.66	0.67	0.75	0.61
19/09/09 to 17/09/10	0.88	0.99	1.18	1.08	0.96	0.74	0.64	0.61	0.49	0.43	0.44	0.37	0.42
Min Standard	1.00	1.00	1.00	1.00	1.00	1.00	1.00	1.00	1.00	1.00	1.00	1.00	1.00

Excess Waiting Time figures are based on 12 weeks data

**Kilometre Performance**

**% Kilometres Operated**



Date Range / Period	7	8	9	10	11	12	13	1	2	3	4	5	6
18/09/10 to 16/09/11	98.15	98.26	98.37	96.82	97.00	98.59	98.51	98.53	98.92	98.05	97.57	98.22	99.12
19/09/09 to 17/09/10	95.38	95.76	96.52	96.75	97.52	96.88	98.20	96.66	98.64	98.16	98.73	98.88	98.07
Min Standard	98.00	98.00	98.00	98.00	98.00	98.00	98.00	98.00	98.00	98.00	98.00	98.00	98.00

Kilometre figures are based on 4 weeks data