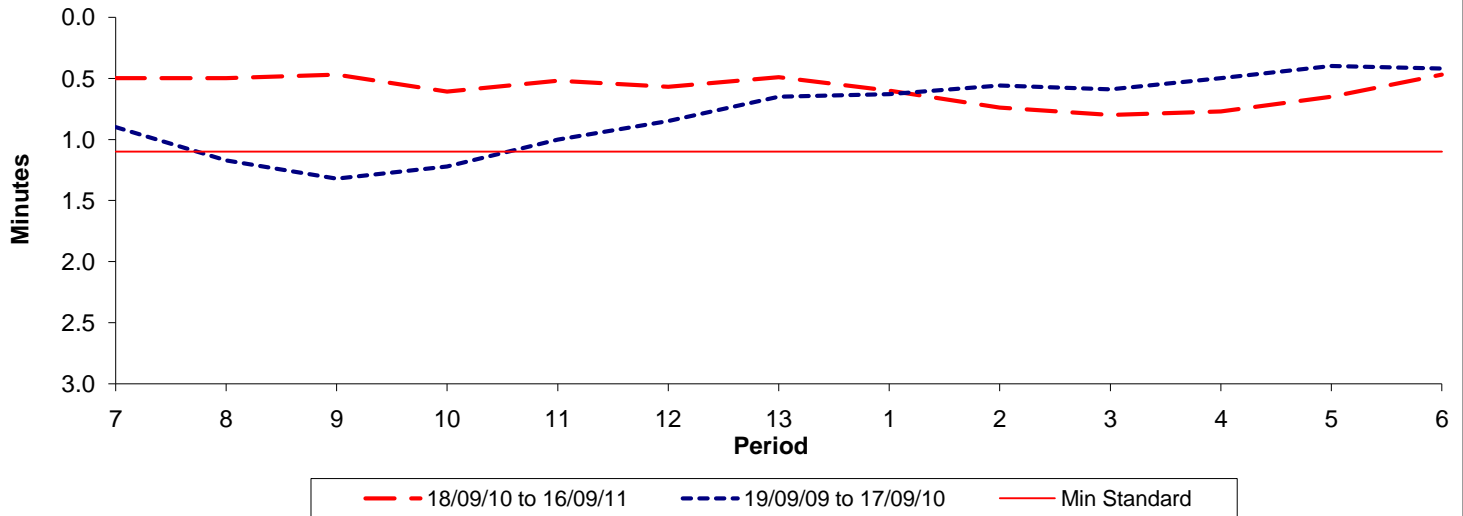




Reliability Performance (High Frequency)

Excess Waiting Time (minutes)

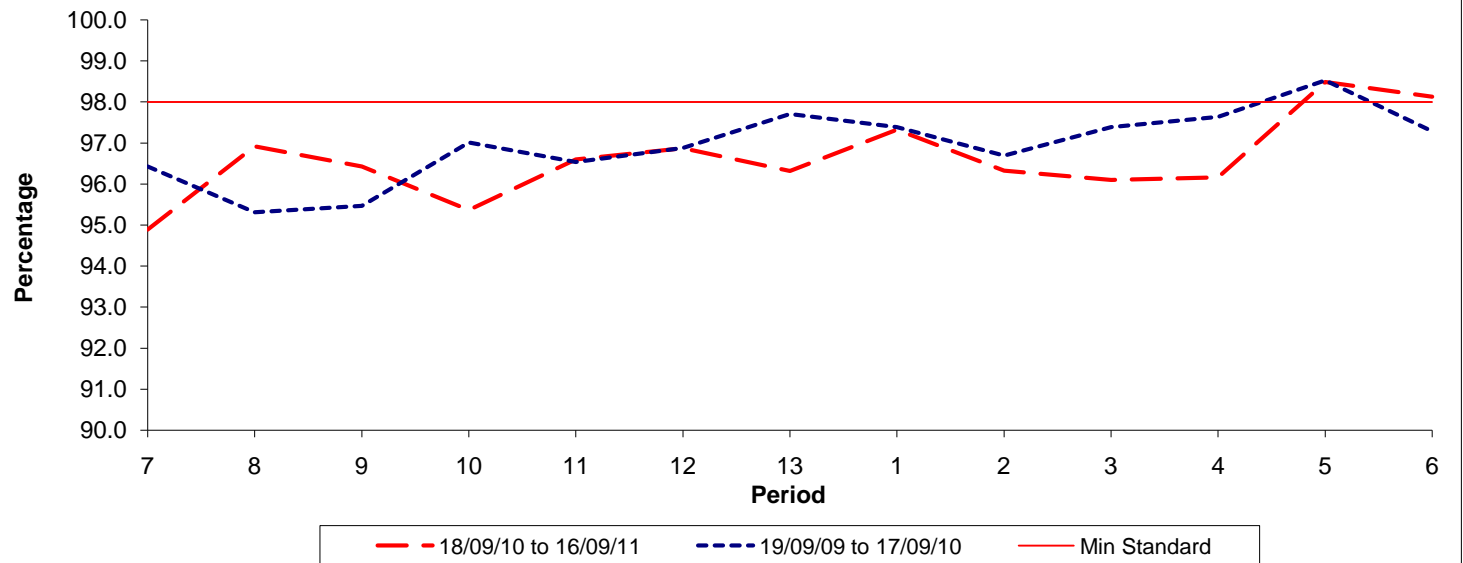


Date Range / Period	7	8	9	10	11	12	13	1	2	3	4	5	6
18/09/10 to 16/09/11	0.50	0.50	0.47	0.61	0.52	0.57	0.49	0.60	0.74	0.80	0.77	0.65	0.47
19/09/09 to 17/09/10	0.90	1.17	1.32	1.22	1.00	0.85	0.65	0.63	0.56	0.59	0.50	0.40	0.42
Min Standard	1.10	1.10	1.10	1.10	1.10	1.10	1.10	1.10	1.10	1.10	1.10	1.10	1.10

Excess Waiting Time figures are based on 12 weeks data

Kilometre Performance

% Kilometres Operated



Date Range / Period	7	8	9	10	11	12	13	1	2	3	4	5	6
18/09/10 to 16/09/11	94.89	96.92	96.43	95.37	96.60	96.87	96.32	97.33	96.33	96.10	96.16	98.49	98.13
19/09/09 to 17/09/10	96.43	95.31	95.47	97.01	96.54	96.88	97.71	97.39	96.69	97.39	97.64	98.53	97.29
Min Standard	98.00	98.00	98.00	98.00	98.00	98.00	98.00	98.00	98.00	98.00	98.00	98.00	98.00

Kilometre figures are based on 4 weeks data