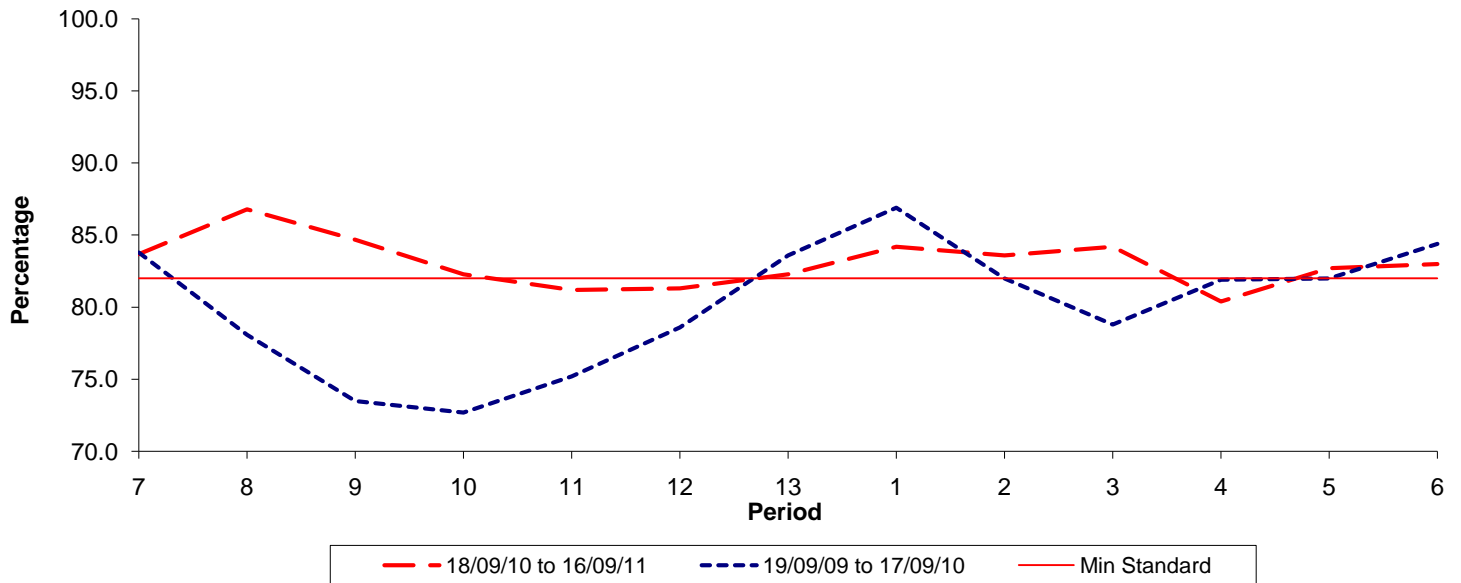




**Reliability Performance ( Low Frequency )**

**% Departing On Time**

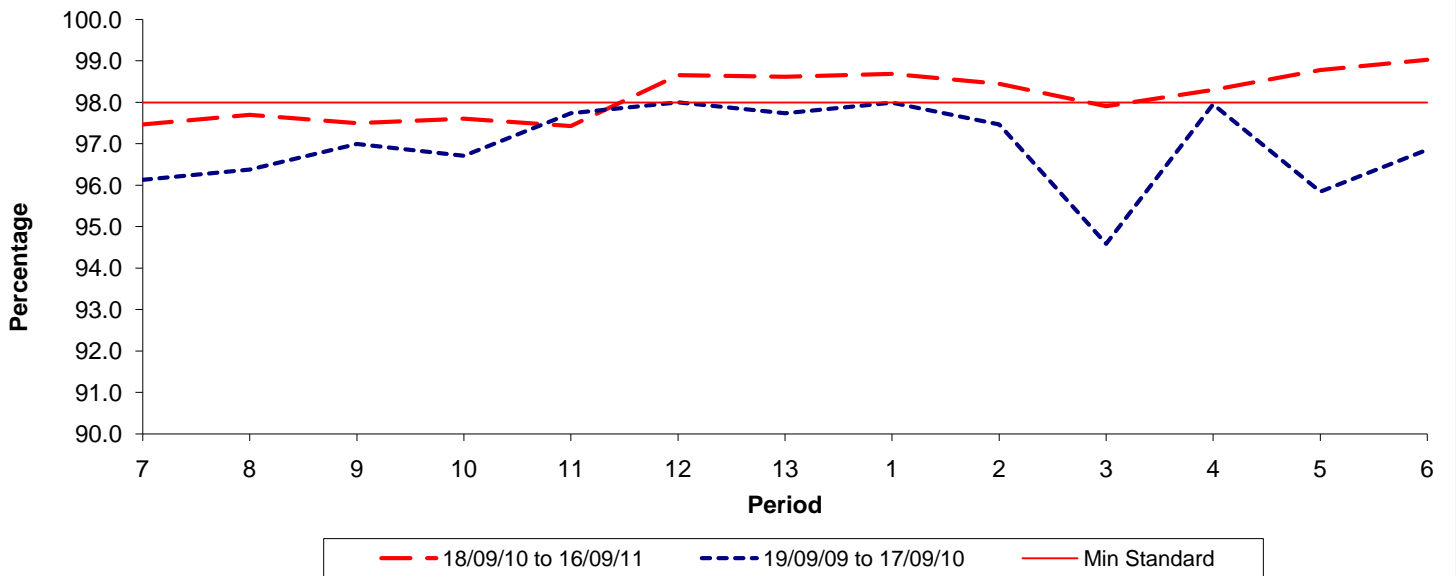


Date Range / Period	7	8	9	10	11	12	13	1	2	3	4	5	6
18/09/10 to 16/09/11	83.70	86.80	84.70	82.30	81.20	81.30	82.30	84.20	83.60	84.20	80.40	82.70	83.00
19/09/09 to 17/09/10	83.80	78.10	73.50	72.70	75.20	78.60	83.60	86.90	82.00	78.80	81.90	82.00	84.40
Min Standard	82.00	82.00	82.00	82.00	82.00	82.00	82.00	82.00	82.00	82.00	82.00	82.00	82.00

On Time figures are based on 12 weeks data

**Kilometre Performance**

**% Kilometres Operated**



Date Range / Period	7	8	9	10	11	12	13	1	2	3	4	5	6
18/09/10 to 16/09/11	97.47	97.70	97.50	97.61	97.43	98.66	98.62	98.69	98.45	97.91	98.30	98.78	99.03
19/09/09 to 17/09/10	96.13	96.38	97.00	96.71	97.74	98.00	97.74	97.99	97.47	94.59	97.95	95.85	96.86
Min Standard	98.00	98.00	98.00	98.00	98.00	98.00	98.00	98.00	98.00	98.00	98.00	98.00	98.00

Kilometre figures are based on 4 weeks data