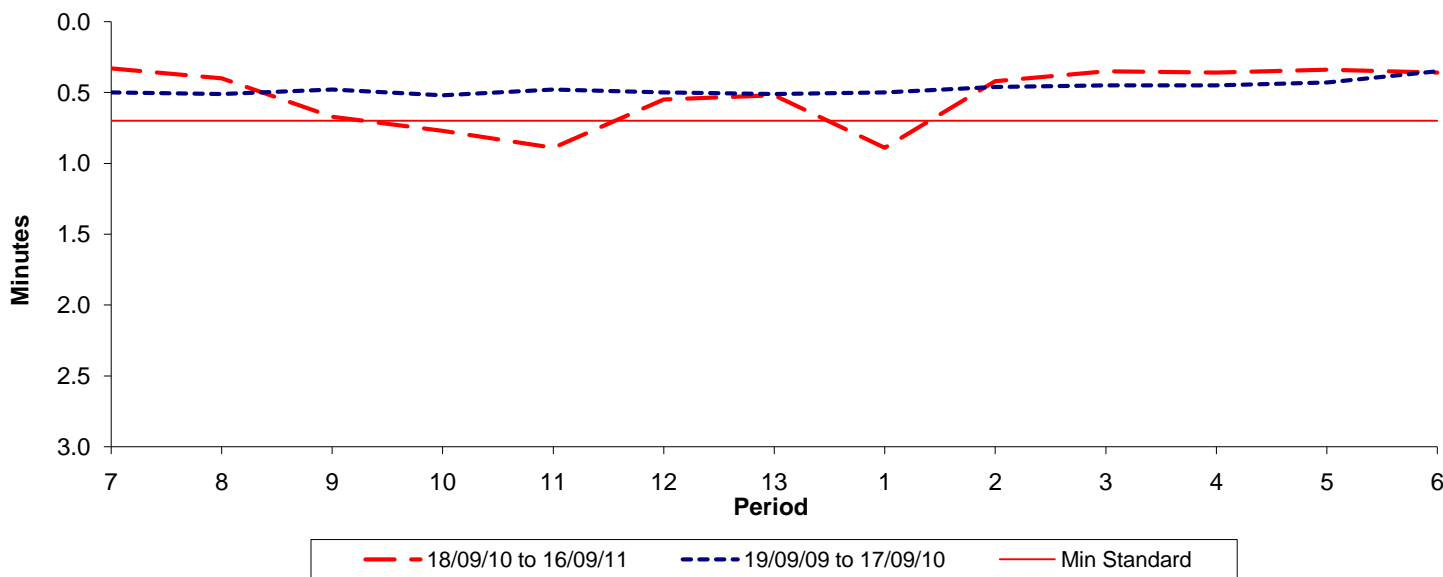




Reliability Performance (High Frequency)

Excess Waiting Time (minutes)

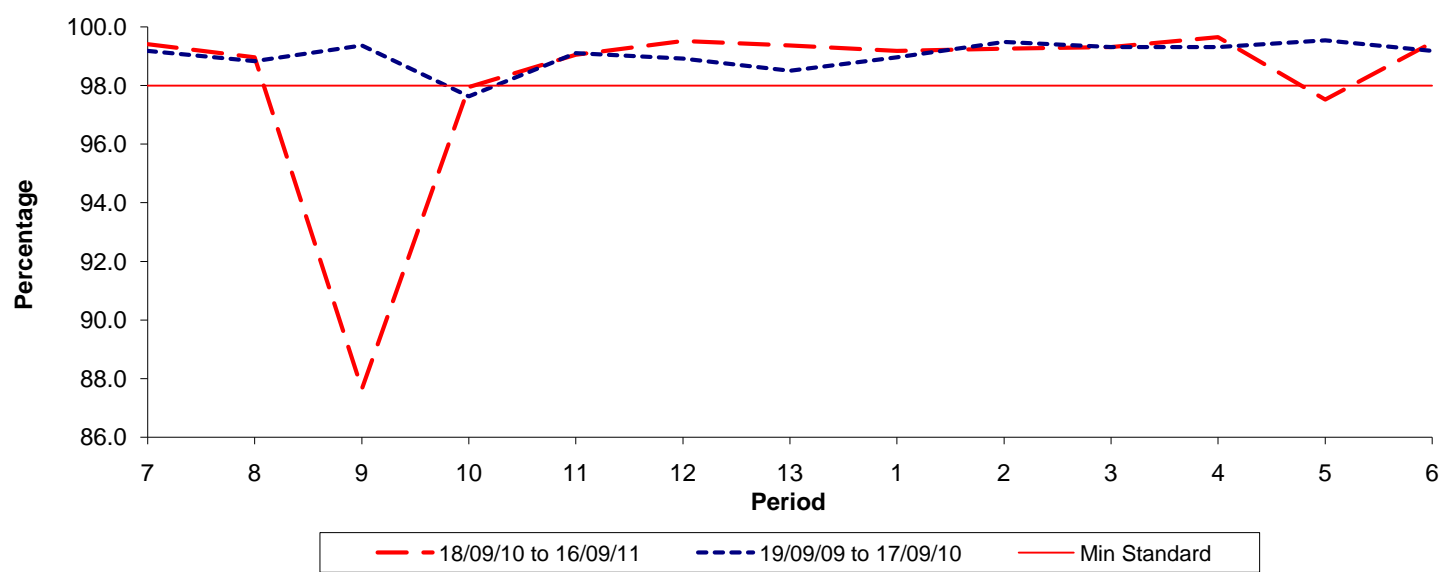


Date Range / Period	7	8	9	10	11	12	13	1	2	3	4	5	6
18/09/10 to 16/09/11	0.33	0.40	0.67	0.77	0.89	0.55	0.52	0.89	0.42	0.35	0.36	0.34	0.36
19/09/09 to 17/09/10	0.50	0.51	0.48	0.52	0.48	0.50	0.51	0.50	0.46	0.45	0.45	0.43	0.35
Min Standard	0.70	0.70	0.70	0.70	0.70	0.70	0.70	0.70	0.70	0.70	0.70	0.70	0.70

Excess Waiting Time figures are based on 12 weeks data

Kilometre Performance

% Kilometres Operated



Date Range / Period	7	8	9	10	11	12	13	1	2	3	4	5	6
18/09/10 to 16/09/11	99.41	98.96	87.64	97.94	99.05	99.52	99.37	99.18	99.26	99.31	99.65	97.52	99.46
19/09/09 to 17/09/10	99.18	98.83	99.37	97.63	99.10	98.92	98.50	98.96	99.49	99.31	99.31	99.54	99.18
Min Standard	98.00	98.00	98.00	98.00	98.00	98.00	98.00	98.00	98.00	98.00	98.00	98.00	98.00

Kilometre figures are based on 4 weeks data