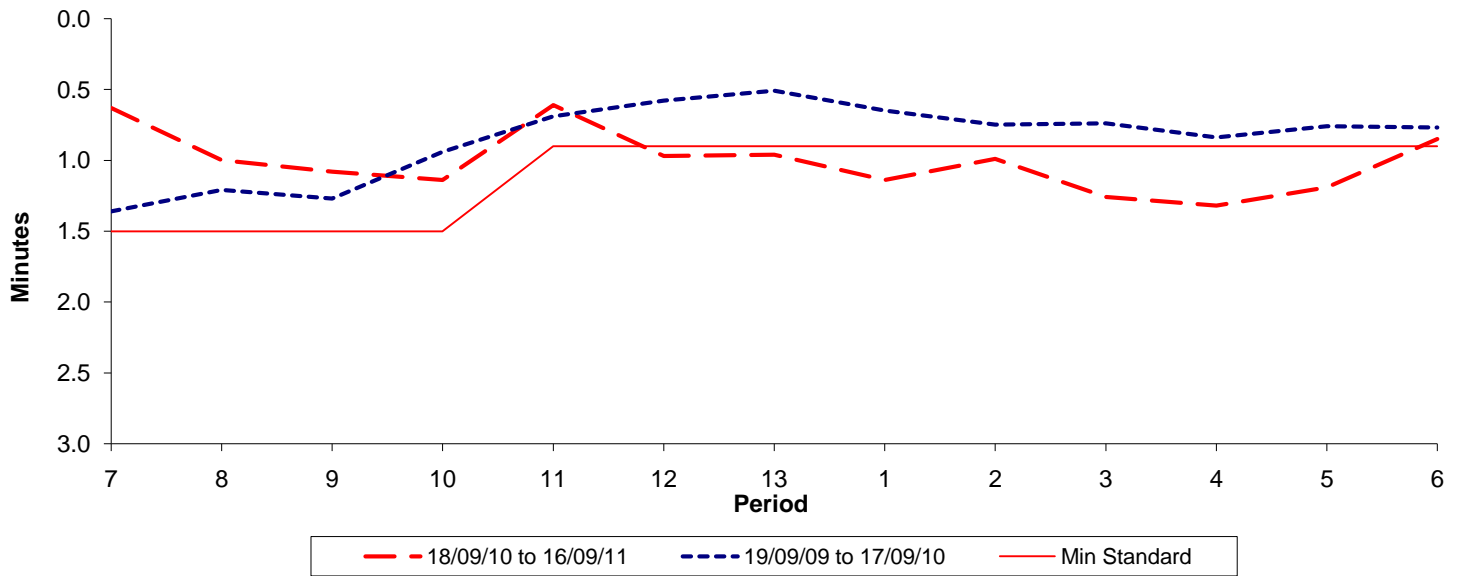




Reliability Performance (High Frequency)

Excess Waiting Time (minutes)

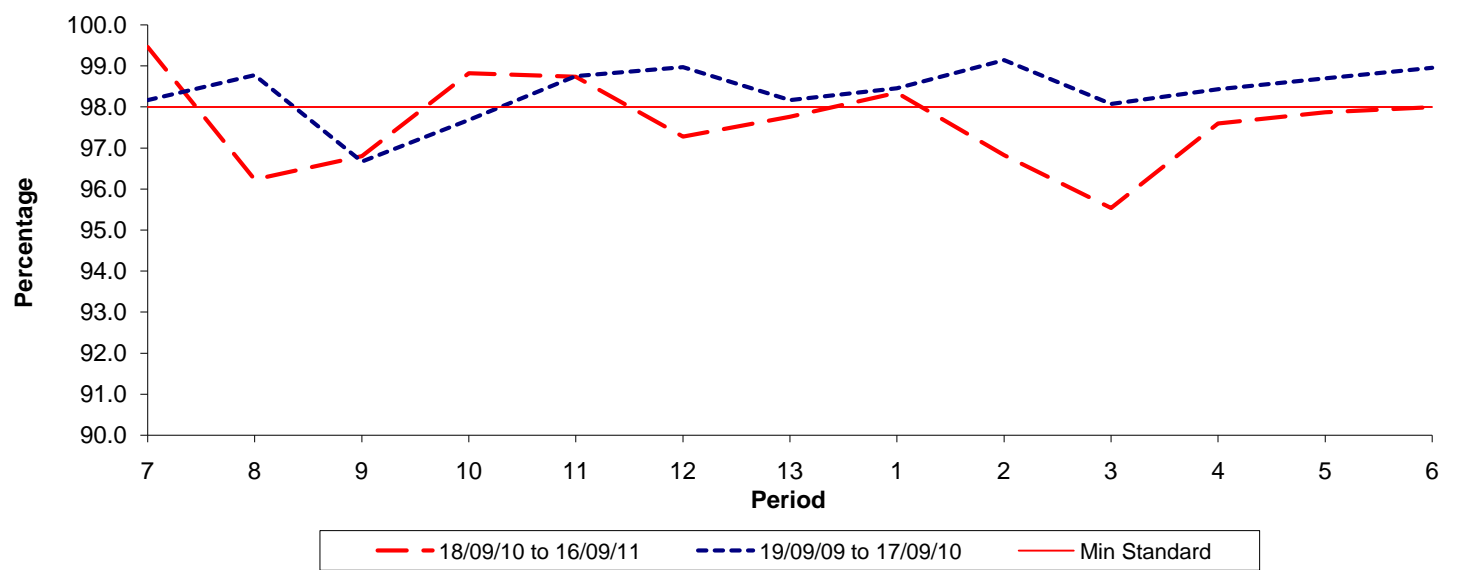


Date Range / Period	7	8	9	10	11	12	13	1	2	3	4	5	6
18/09/10 to 16/09/11	0.63	1.00	1.08	1.14	0.61	0.97	0.96	1.14	0.99	1.26	1.32	1.19	0.85
19/09/09 to 17/09/10	1.36	1.21	1.27	0.94	0.69	0.58	0.51	0.65	0.75	0.74	0.84	0.76	0.77
Min Standard	1.50	1.50	1.50	1.50	0.90	0.90	0.90	0.90	0.90	0.90	0.90	0.90	0.90

Excess Waiting Time figures are based on 12 weeks data

Kilometre Performance

% Kilometres Operated



Date Range / Period	7	8	9	10	11	12	13	1	2	3	4	5	6
18/09/10 to 16/09/11	99.46	96.23	96.80	98.82	98.74	97.28	97.76	98.35	96.83	95.54	97.60	97.87	98.00
19/09/09 to 17/09/10	98.16	98.77	96.67	97.68	98.75	98.97	98.16	98.46	99.14	98.07	98.43	98.69	98.95
Min Standard	98.00	98.00	98.00	98.00	98.00	98.00	98.00	98.00	98.00	98.00	98.00	98.00	98.00

Kilometre figures are based on 4 weeks data