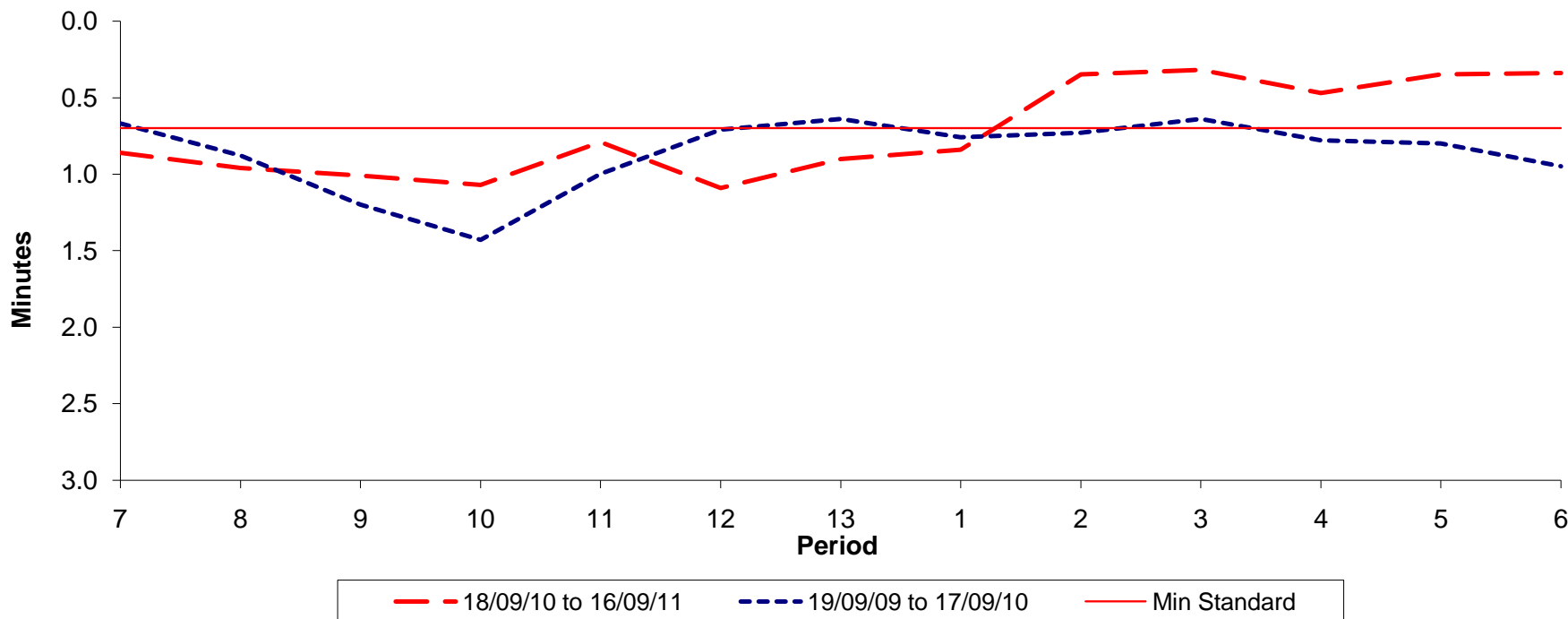




Reliability Performance (High Frequency)

Excess Waiting Time (minutes)

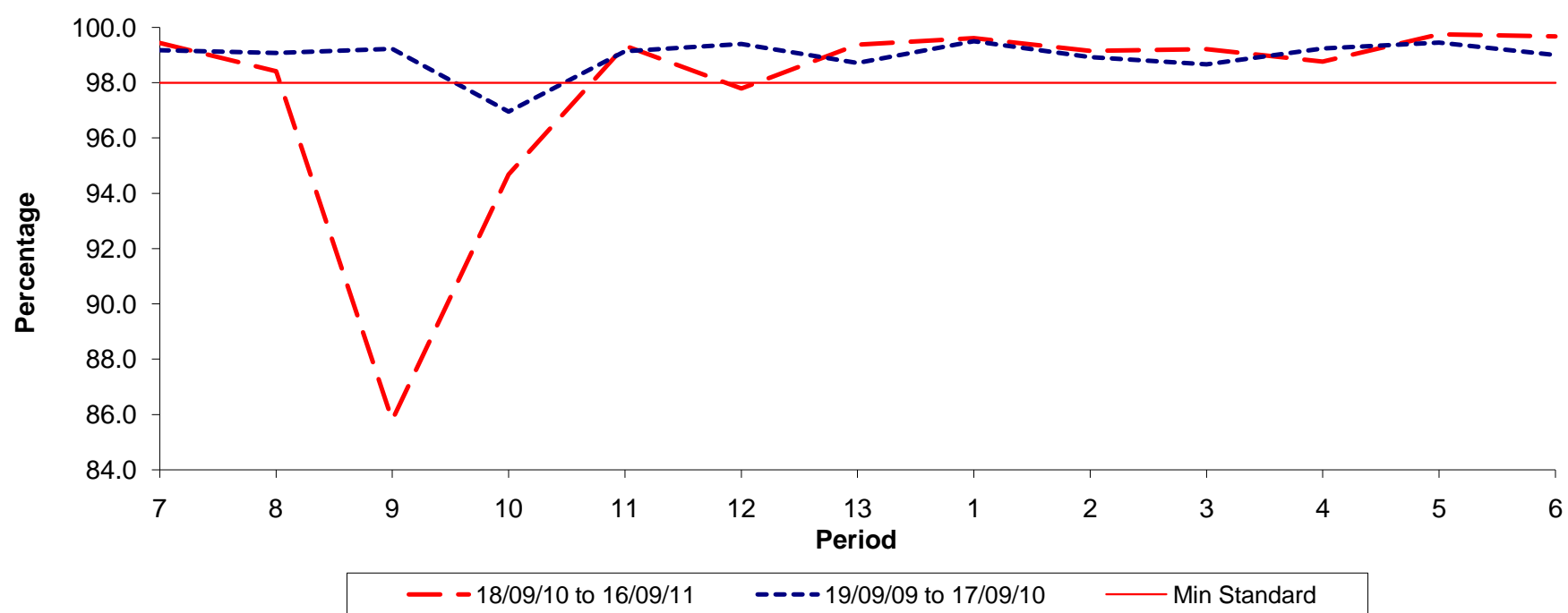


Date Range / Period	7	8	9	10	11	12	13	1	2	3	4	5	6
18/09/10 to 16/09/11	0.86	0.96	1.01	1.07	0.79	1.09	0.90	0.84	0.35	0.32	0.47	0.35	0.34
19/09/09 to 17/09/10	0.67	0.88	1.20	1.43	1.00	0.71	0.64	0.76	0.73	0.64	0.78	0.80	0.95
Min Standard	0.70	0.70	0.70	0.70	0.70	0.70	0.70	0.70	0.70	0.70	0.70	0.70	0.70

Excess Waiting Time figures are based on 12 weeks data

Kilometre Performance

% Kilometres Operated



Date Range / Period	7	8	9	10	11	12	13	1	2	3	4	5	6
18/09/10 to 16/09/11	99.44	98.42	85.80	94.69	99.34	97.79	99.38	99.61	99.15	99.21	98.77	99.75	99.67
19/09/09 to 17/09/10	99.19	99.08	99.24	96.95	99.15	99.41	98.72	99.51	98.93	98.68	99.24	99.46	99.01
Min Standard	98.00	98.00	98.00	98.00	98.00	98.00	98.00	98.00	98.00	98.00	98.00	98.00	98.00

Kilometre figures are based on 4 weeks data