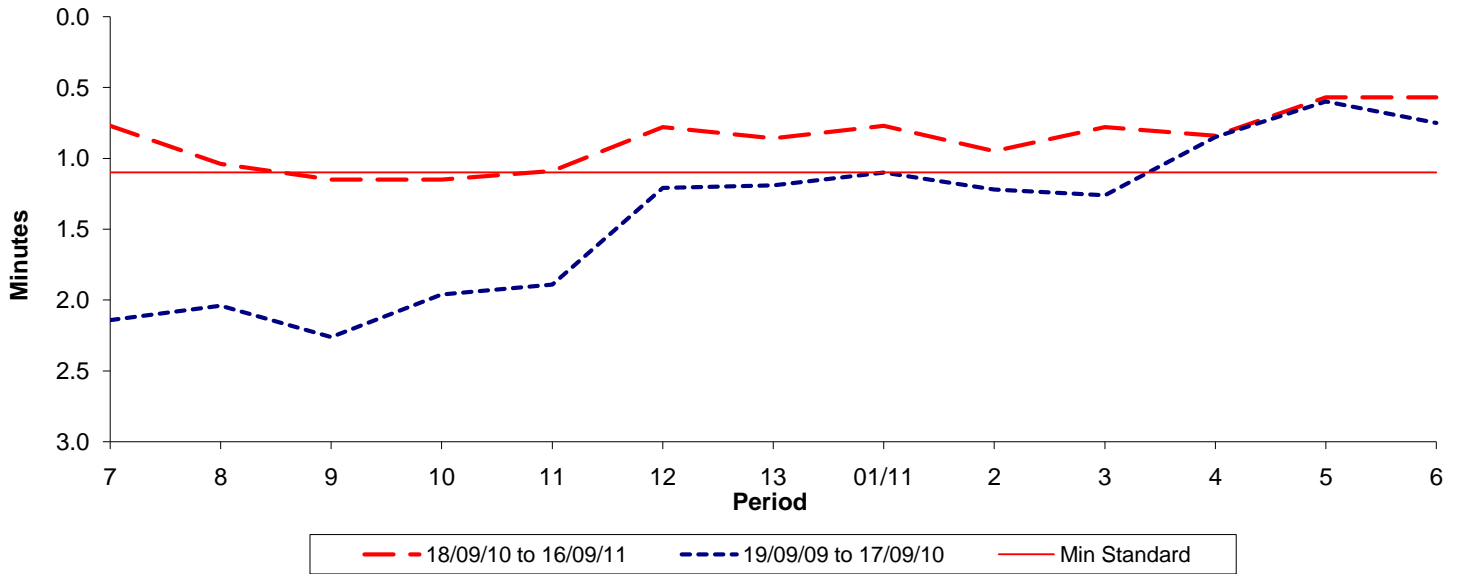




Reliability Performance (High Frequency)

Excess Waiting Time (minutes)

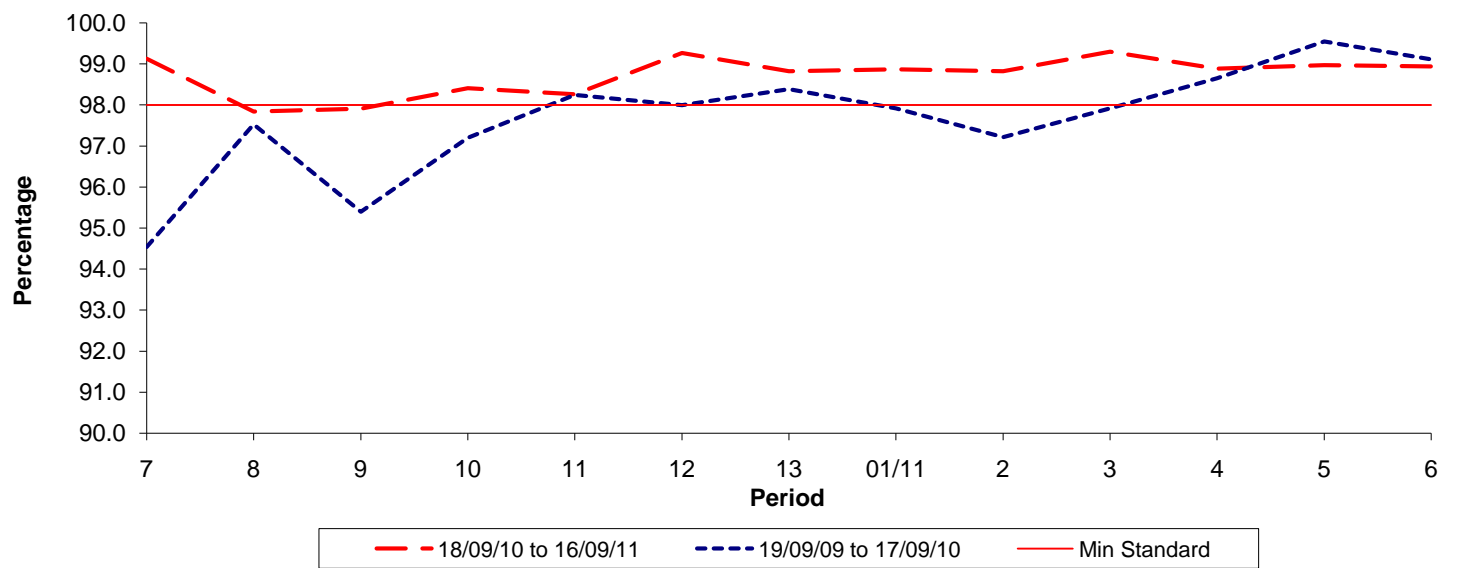


Date Range / Period	7	8	9	10	11	12	13	01/11	2	3	4	5	6
18/09/10 to 16/09/11	0.77	1.04	1.15	1.15	1.09	0.78	0.86	0.77	0.95	0.78	0.84	0.57	0.57
19/09/09 to 17/09/10	2.14	2.04	2.26	1.96	1.89	1.21	1.19	1.10	1.22	1.26	0.85	0.60	0.75
Min Standard	1.10	1.10	1.10	1.10	1.10	1.10	1.10	1.10	1.10	1.10	1.10	1.10	1.10

Excess Waiting Time figures are based on 12 weeks data

Kilometre Performance

% Kilometres Operated



Date Range / Period	7	8	9	10	11	12	13	01/11	2	3	4	5	6
18/09/10 to 16/09/11	99.13	97.84	97.91	98.41	98.26	99.27	98.82	98.87	98.82	99.30	98.89	98.97	98.94
19/09/09 to 17/09/10	94.54	97.53	95.40	97.20	98.25	98.00	98.39	97.92	97.22	97.92	98.65	99.55	99.11
Min Standard	98.00	98.00	98.00	98.00	98.00	98.00	98.00	98.00	98.00	98.00	98.00	98.00	98.00

Kilometre figures are based on 4 weeks data