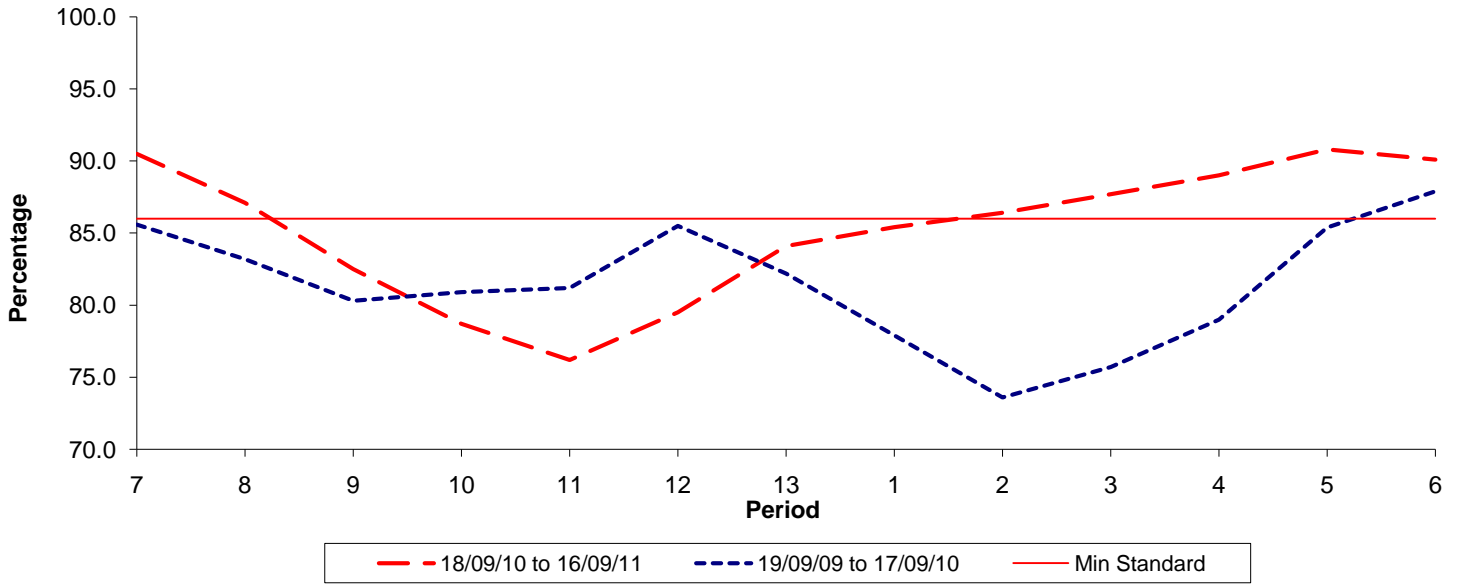




**Reliability Performance ( Low Frequency )**

**% Departing On Time**

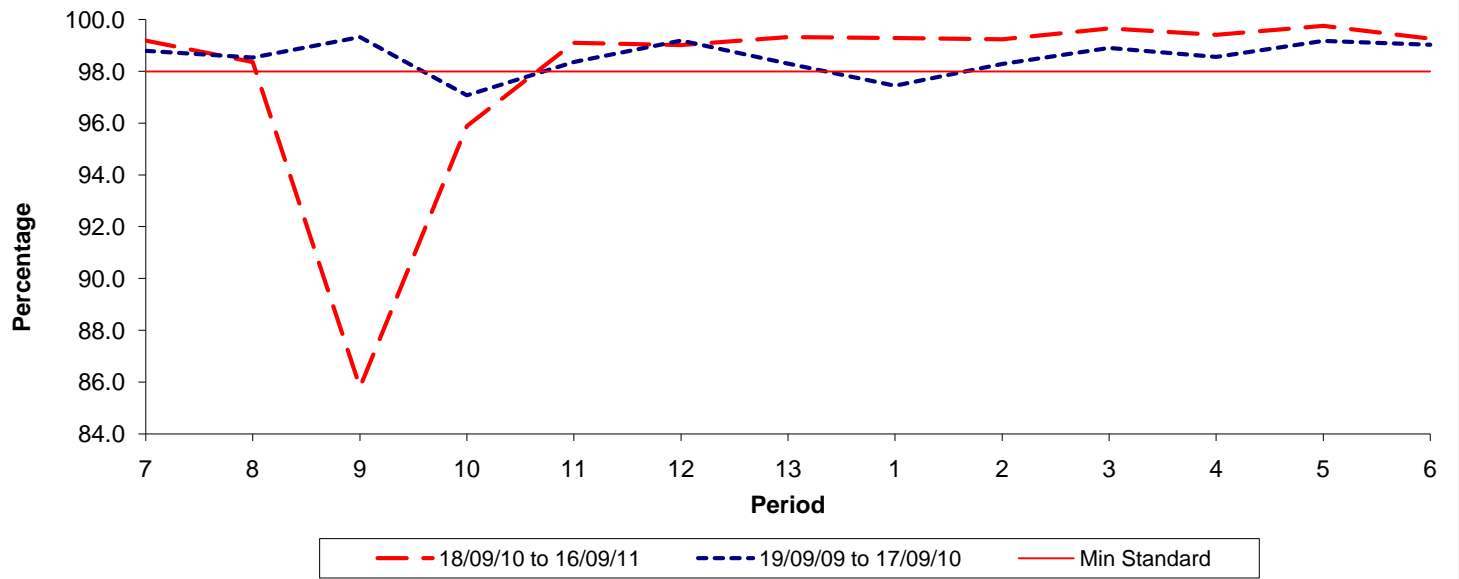


Date Range / Period	7	8	9	10	11	12	13	1	2	3	4	5	6
18/09/10 to 16/09/11	90.50	87.10	82.50	78.70	76.20	79.50	84.10	85.40	86.40	87.70	89.00	90.80	90.10
19/09/09 to 17/09/10	85.60	83.20	80.30	80.90	81.20	85.50	82.20	77.90	73.60	75.70	79.00	85.40	87.90
Min Standard	86.00	86.00	86.00	86.00	86.00	86.00	86.00	86.00	86.00	86.00	86.00	86.00	86.00

On Time figures are based on 12 weeks data

**Kilometre Performance**

**% Kilometres Operated**



Date Range / Period	7	8	9	10	11	12	13	1	2	3	4	5	6
18/09/10 to 16/09/11	99.19	98.36	85.80	95.89	99.11	99.02	99.33	99.29	99.24	99.66	99.41	99.76	99.27
19/09/09 to 17/09/10	98.80	98.54	99.33	97.07	98.36	99.19	98.30	97.44	98.29	98.91	98.56	99.18	99.03
Min Standard	98.00	98.00	98.00	98.00	98.00	98.00	98.00	98.00	98.00	98.00	98.00	98.00	98.00

Kilometre figures are based on 4 weeks data