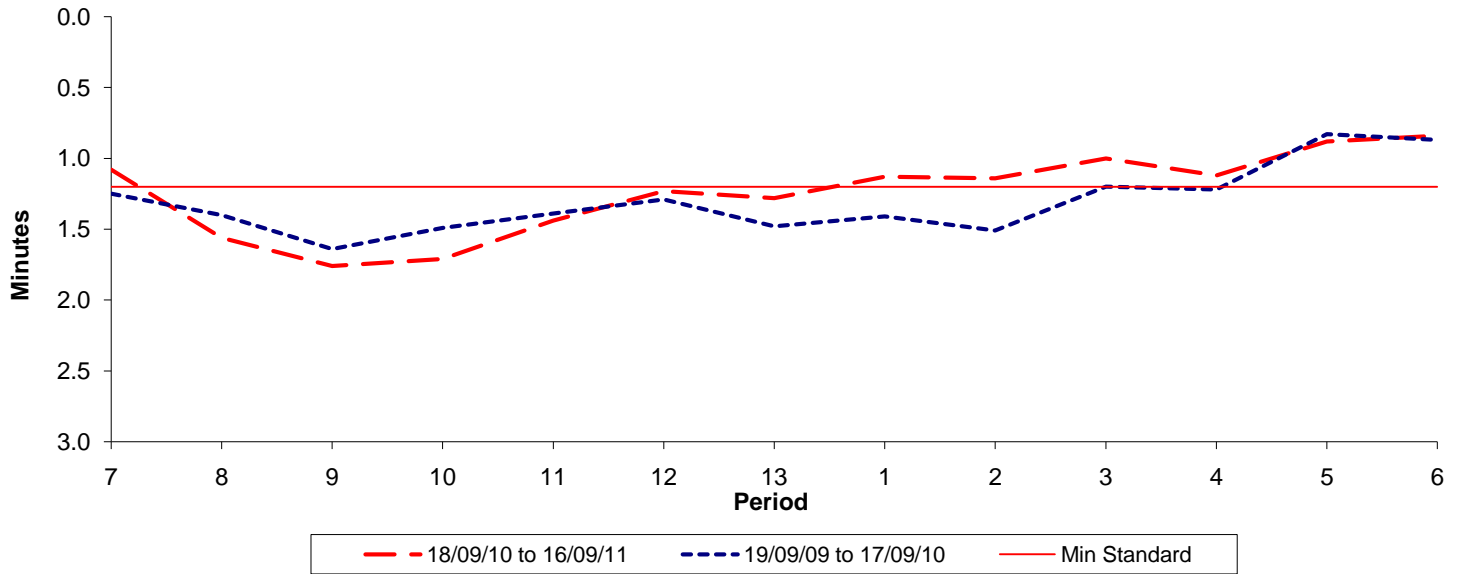




Reliability Performance (High Frequency)

Excess Waiting Time (minutes)

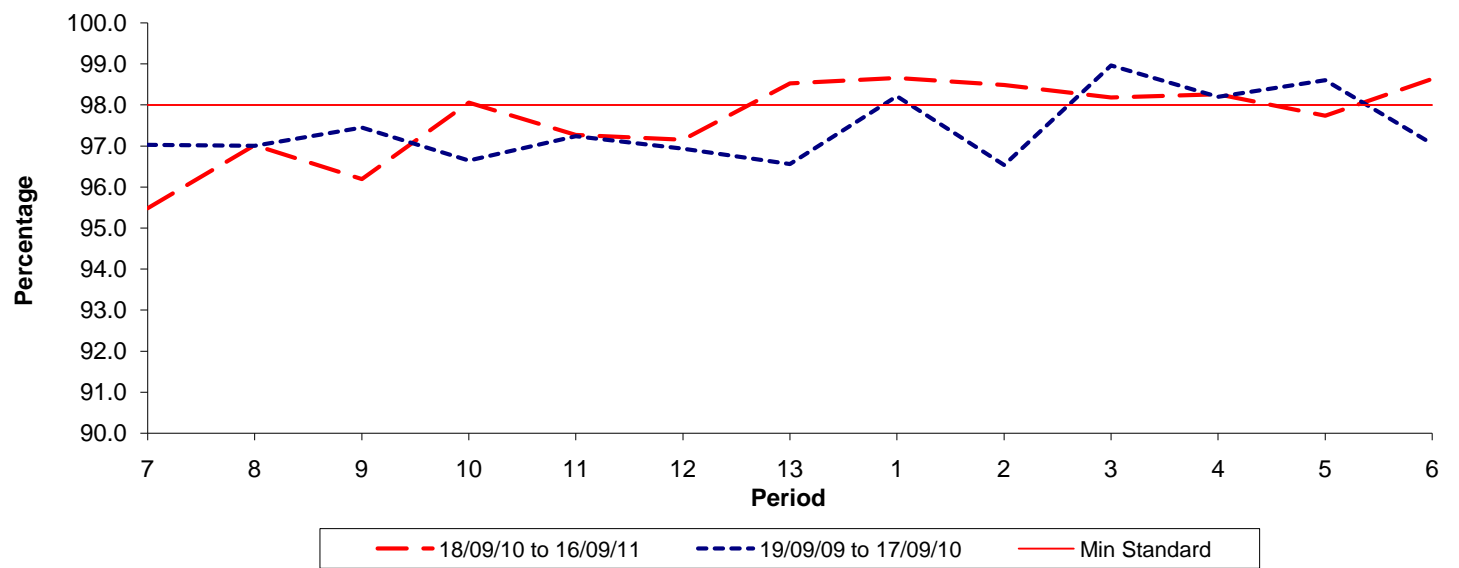


Date Range / Period	7	8	9	10	11	12	13	1	2	3	4	5	6
18/09/10 to 16/09/11	1.08	1.56	1.76	1.71	1.44	1.23	1.28	1.13	1.14	1.00	1.12	0.88	0.84
19/09/09 to 17/09/10	1.25	1.40	1.64	1.49	1.39	1.29	1.48	1.41	1.51	1.20	1.22	0.83	0.87
Min Standard	1.20	1.20	1.20	1.20	1.20	1.20	1.20	1.20	1.20	1.20	1.20	1.20	1.20

Excess Waiting Time figures are based on 12 weeks data

Kilometre Performance

% Kilometres Operated



Date Range / Period	7	8	9	10	11	12	13	1	2	3	4	5	6
18/09/10 to 16/09/11	95.48	97.02	96.19	98.06	97.27	97.15	98.53	98.66	98.49	98.18	98.26	97.74	98.64
19/09/09 to 17/09/10	97.03	97.01	97.45	96.65	97.24	96.94	96.56	98.21	96.54	98.96	98.20	98.60	97.05
Min Standard	98.00	98.00	98.00	98.00	98.00	98.00	98.00	98.00	98.00	98.00	98.00	98.00	98.00

Kilometre figures are based on 4 weeks data