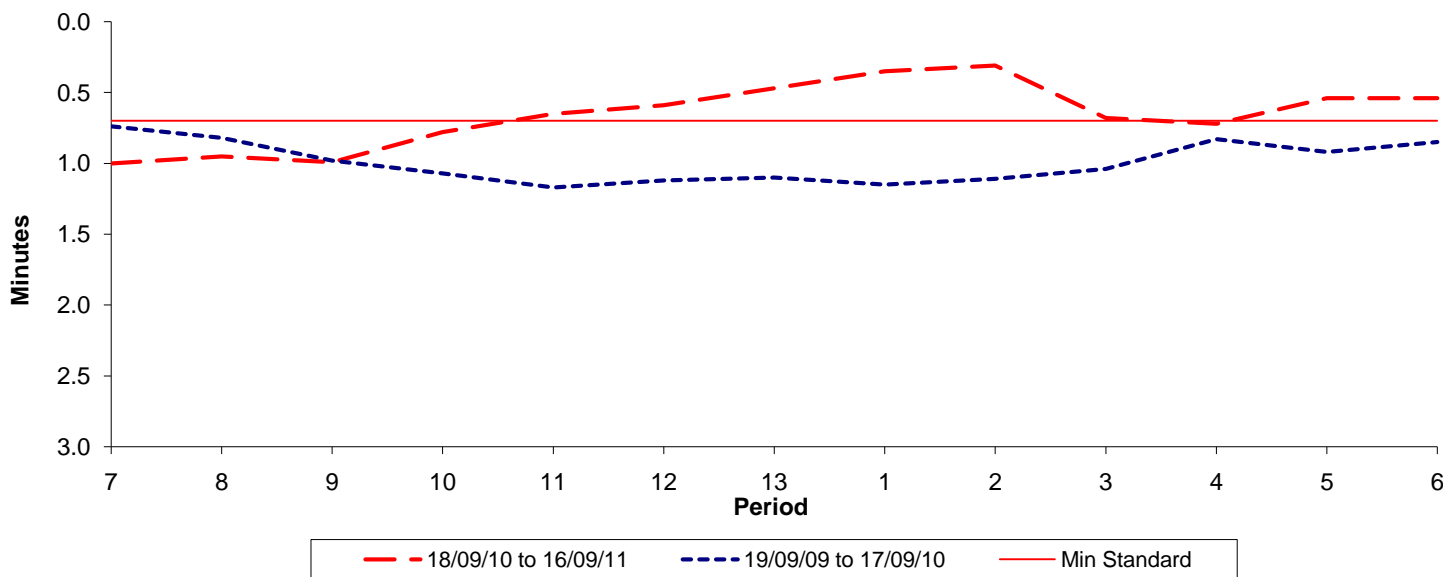




Reliability Performance (High Frequency)

Excess Waiting Time (minutes)

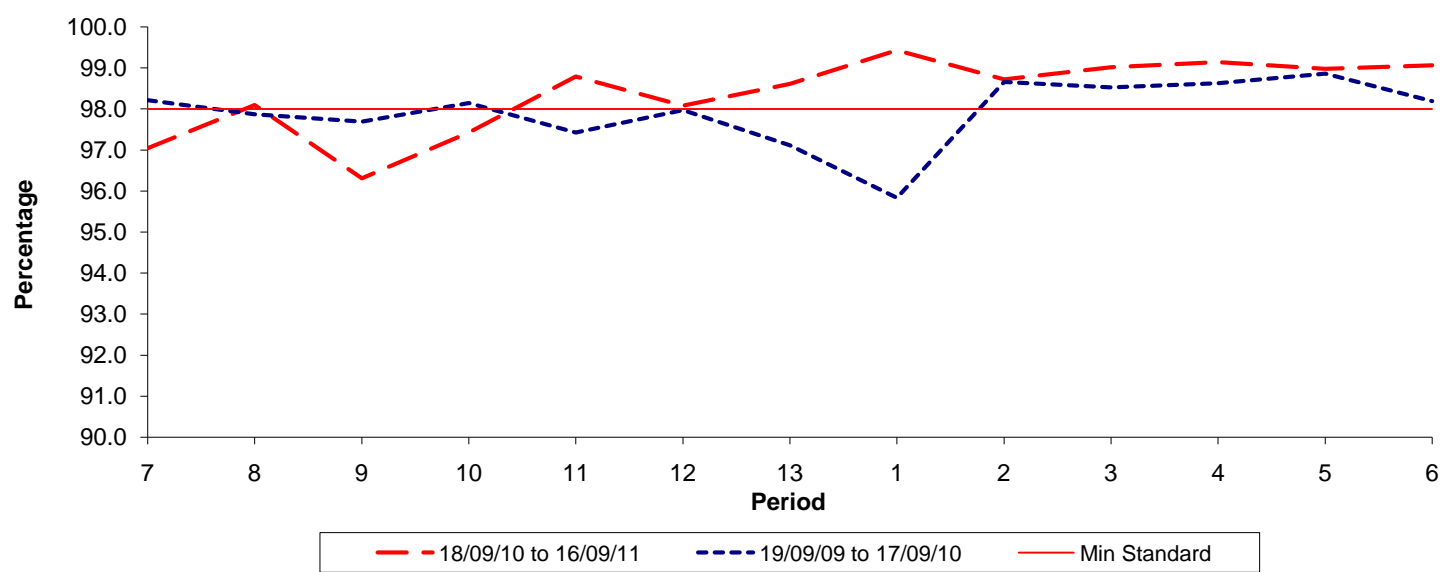


Date Range / Period	7	8	9	10	11	12	13	1	2	3	4	5	6
18/09/10 to 16/09/11	1.00	0.95	0.99	0.78	0.65	0.59	0.47	0.35	0.31	0.68	0.72	0.54	0.54
19/09/09 to 17/09/10	0.74	0.82	0.98	1.07	1.17	1.12	1.10	1.15	1.11	1.04	0.83	0.92	0.85
Min Standard	0.70	0.70	0.70	0.70	0.70	0.70	0.70	0.70	0.70	0.70	0.70	0.70	0.70

Excess Waiting Time figures are based on 12 weeks data

Kilometre Performance

% Kilometres Operated



Date Range / Period	7	8	9	10	11	12	13	1	2	3	4	5	6
18/09/10 to 16/09/11	97.04	98.10	96.31	97.42	98.79	98.08	98.61	99.43	98.72	99.02	99.14	98.98	99.06
19/09/09 to 17/09/10	98.21	97.87	97.69	98.14	97.42	97.97	97.11	95.83	98.65	98.52	98.62	98.86	98.19
Min Standard	98.00	98.00	98.00	98.00	98.00	98.00	98.00	98.00	98.00	98.00	98.00	98.00	98.00

Kilometre figures are based on 4 weeks data