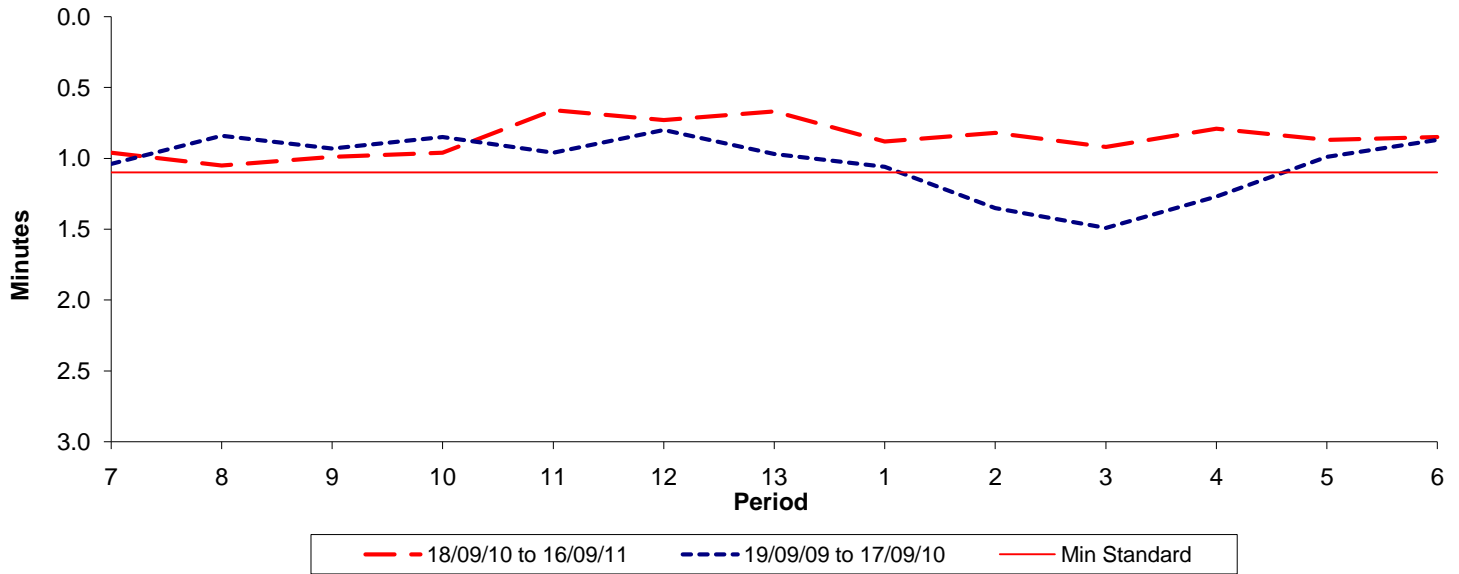




Reliability Performance (High Frequency)

Excess Waiting Time (minutes)

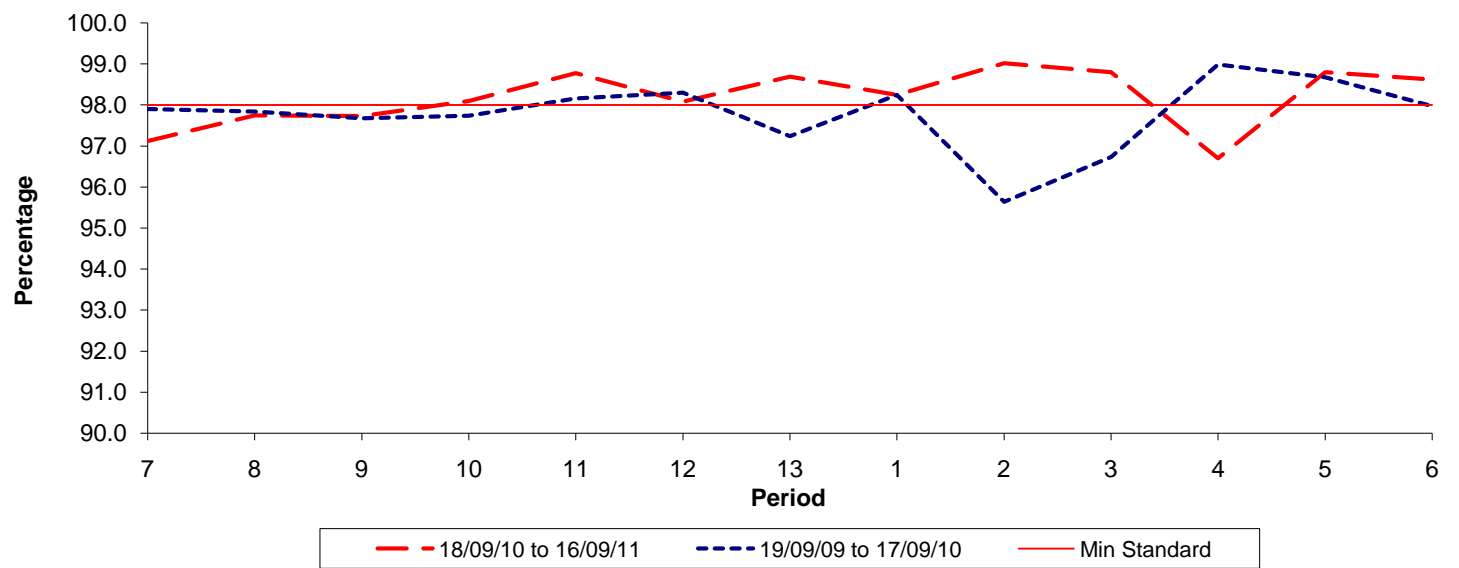


Date Range / Period	7	8	9	10	11	12	13	1	2	3	4	5	6
18/09/10 to 16/09/11	0.96	1.05	0.99	0.96	0.66	0.73	0.67	0.88	0.82	0.92	0.79	0.87	0.85
19/09/09 to 17/09/10	1.04	0.84	0.93	0.85	0.96	0.80	0.97	1.06	1.35	1.49	1.27	0.99	0.87
Min Standard	1.10	1.10	1.10	1.10	1.10	1.10	1.10	1.10	1.10	1.10	1.10	1.10	1.10

Excess Waiting Time figures are based on 12 weeks data

Kilometre Performance

% Kilometres Operated



Date Range / Period	7	8	9	10	11	12	13	1	2	3	4	5	6
18/09/10 to 16/09/11	97.12	97.75	97.73	98.10	98.78	98.09	98.69	98.25	99.02	98.80	96.70	98.80	98.62
19/09/09 to 17/09/10	97.90	97.84	97.67	97.74	98.16	98.30	97.24	98.25	95.64	96.73	98.99	98.67	97.97
Min Standard	98.00	98.00	98.00	98.00	98.00	98.00	98.00	98.00	98.00	98.00	98.00	98.00	98.00

Kilometre figures are based on 4 weeks data