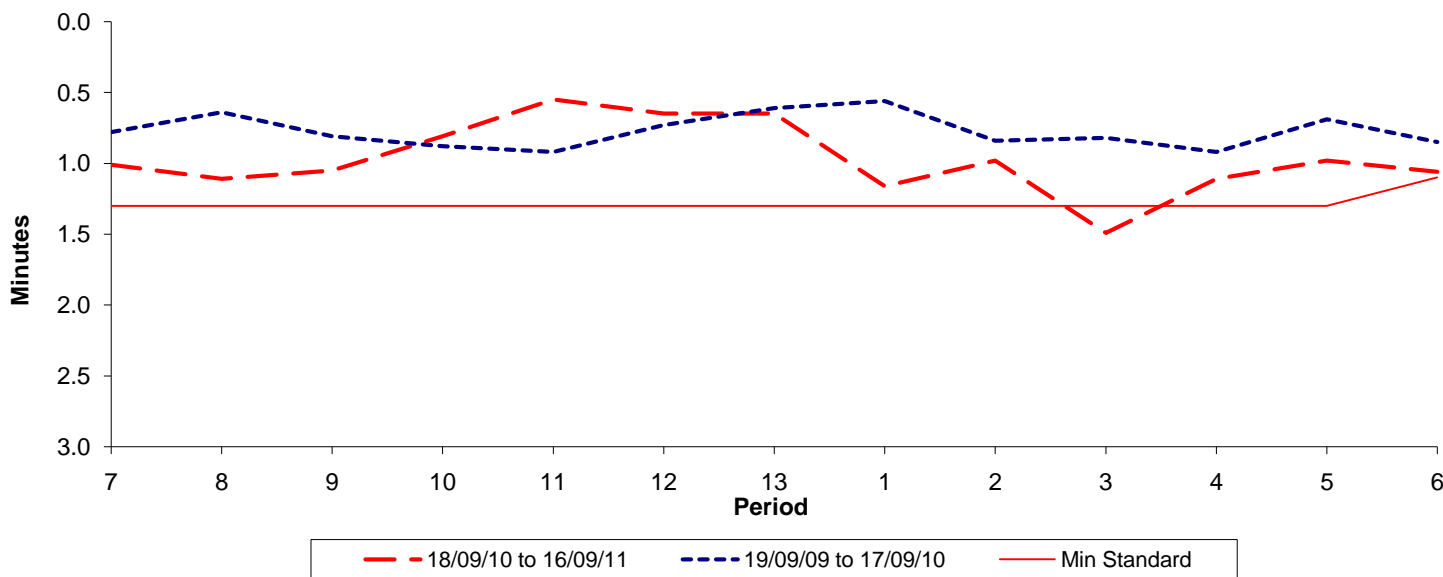




Reliability Performance (High Frequency)

Excess Waiting Time (minutes)

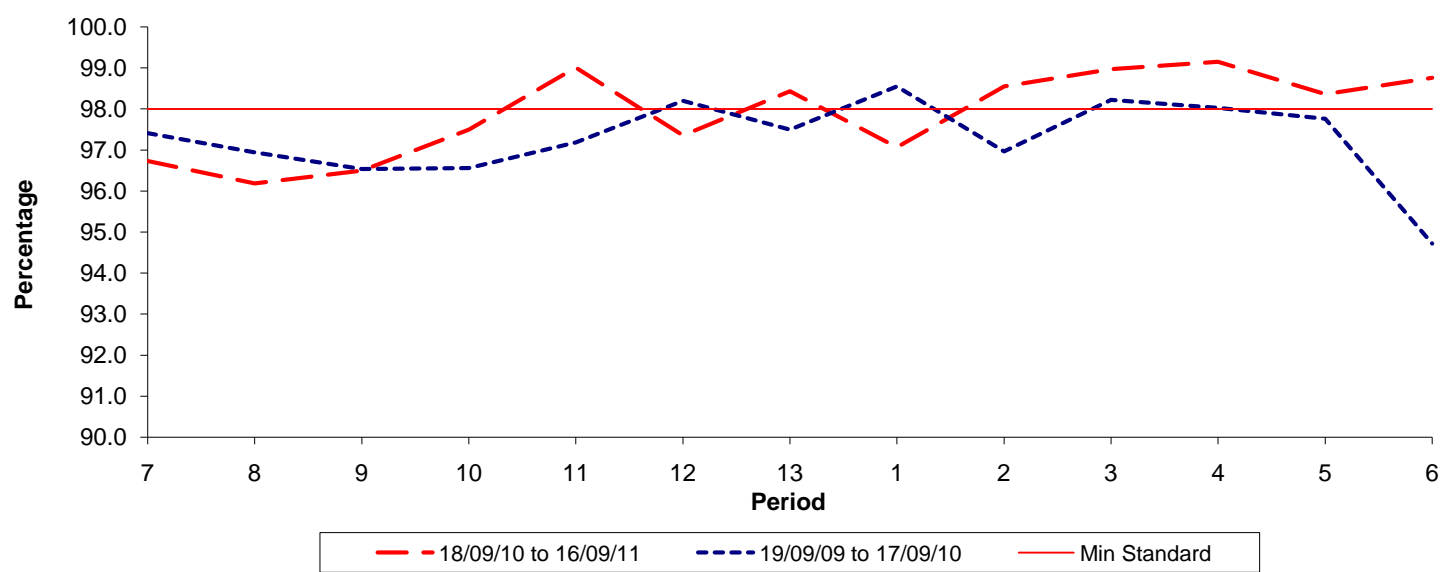


Date Range / Period	7	8	9	10	11	12	13	1	2	3	4	5	6
18/09/10 to 16/09/11	1.01	1.11	1.05	0.81	0.55	0.65	0.65	1.16	0.98	1.49	1.11	0.98	1.06
19/09/09 to 17/09/10	0.78	0.64	0.81	0.88	0.92	0.73	0.61	0.56	0.84	0.82	0.92	0.69	0.85
Min Standard	1.30	1.30	1.30	1.30	1.30	1.30	1.30	1.30	1.30	1.30	1.30	1.30	1.10

Excess Waiting Time figures are based on 12 weeks data

Kilometre Performance

% Kilometres Operated



Date Range / Period	7	8	9	10	11	12	13	1	2	3	4	5	6
18/09/10 to 16/09/11	96.73	96.19	96.50	97.50	99.01	97.36	98.43	97.07	98.55	98.97	99.15	98.36	98.76
19/09/09 to 17/09/10	97.42	96.94	96.54	96.56	97.19	98.20	97.50	98.55	96.97	98.22	98.03	97.76	94.72
Min Standard	98.00	98.00	98.00	98.00	98.00	98.00	98.00	98.00	98.00	98.00	98.00	98.00	98.00

Kilometre figures are based on 4 weeks data