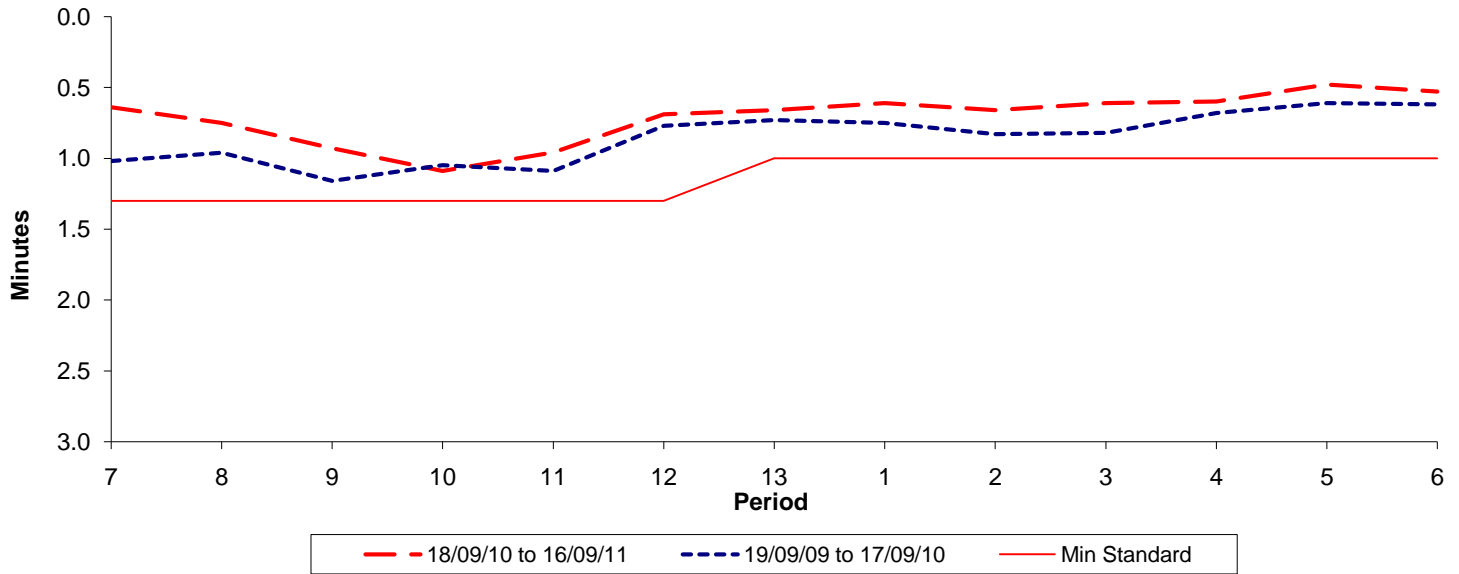




**Reliability Performance ( High Frequency )**

Excess Waiting Time (minutes)

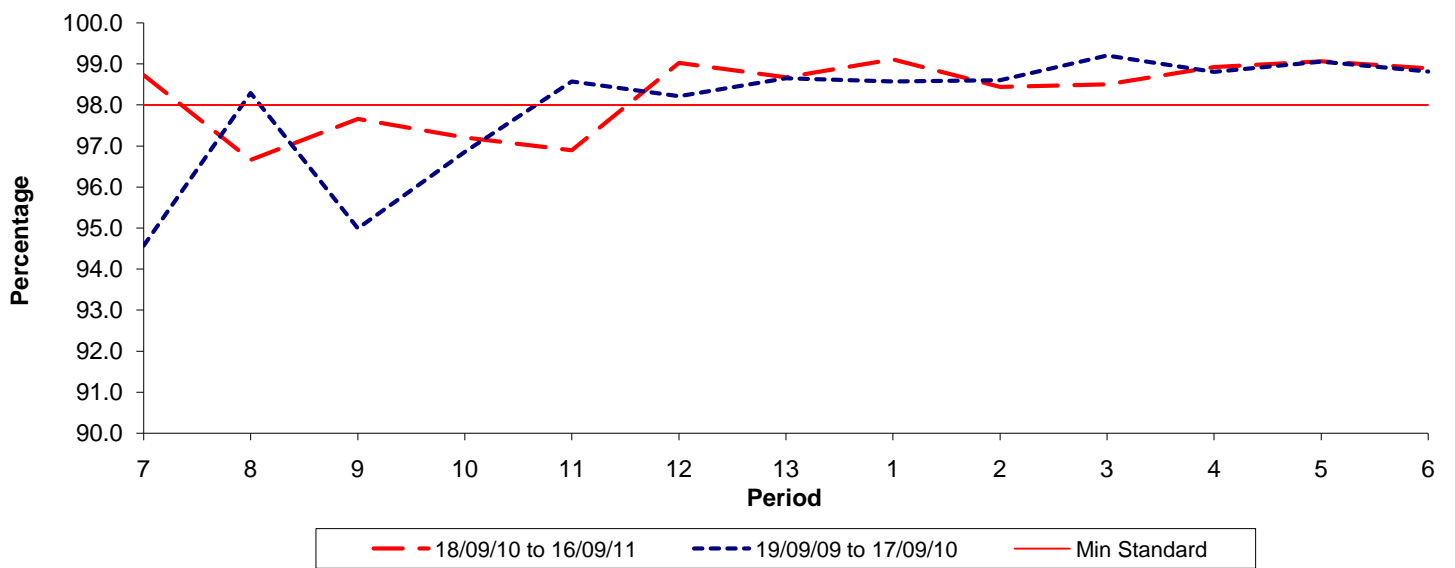


Date Range / Period	7	8	9	10	11	12	13	1	2	3	4	5	6
18/09/10 to 16/09/11	0.64	0.75	0.93	1.09	0.96	0.69	0.66	0.61	0.66	0.61	0.60	0.48	0.53
19/09/09 to 17/09/10	1.02	0.96	1.16	1.05	1.09	0.77	0.73	0.75	0.83	0.82	0.68	0.61	0.62
Min Standard	1.30	1.30	1.30	1.30	1.30	1.30	1.00	1.00	1.00	1.00	1.00	1.00	1.00

Excess Waiting Time figures are based on 12 weeks data

**Kilometre Performance**

% Kilometres Operated



Date Range / Period	7	8	9	10	11	12	13	1	2	3	4	5	6
18/09/10 to 16/09/11	98.73	96.66	97.66	97.21	96.89	99.02	98.67	99.11	98.44	98.50	98.92	99.06	98.89
19/09/09 to 17/09/10	94.57	98.29	94.99	96.86	98.57	98.21	98.65	98.57	98.61	99.20	98.81	99.06	98.81
Min Standard	98.00	98.00	98.00	98.00	98.00	98.00	98.00	98.00	98.00	98.00	98.00	98.00	98.00

Kilometre figures are based on 4 weeks data