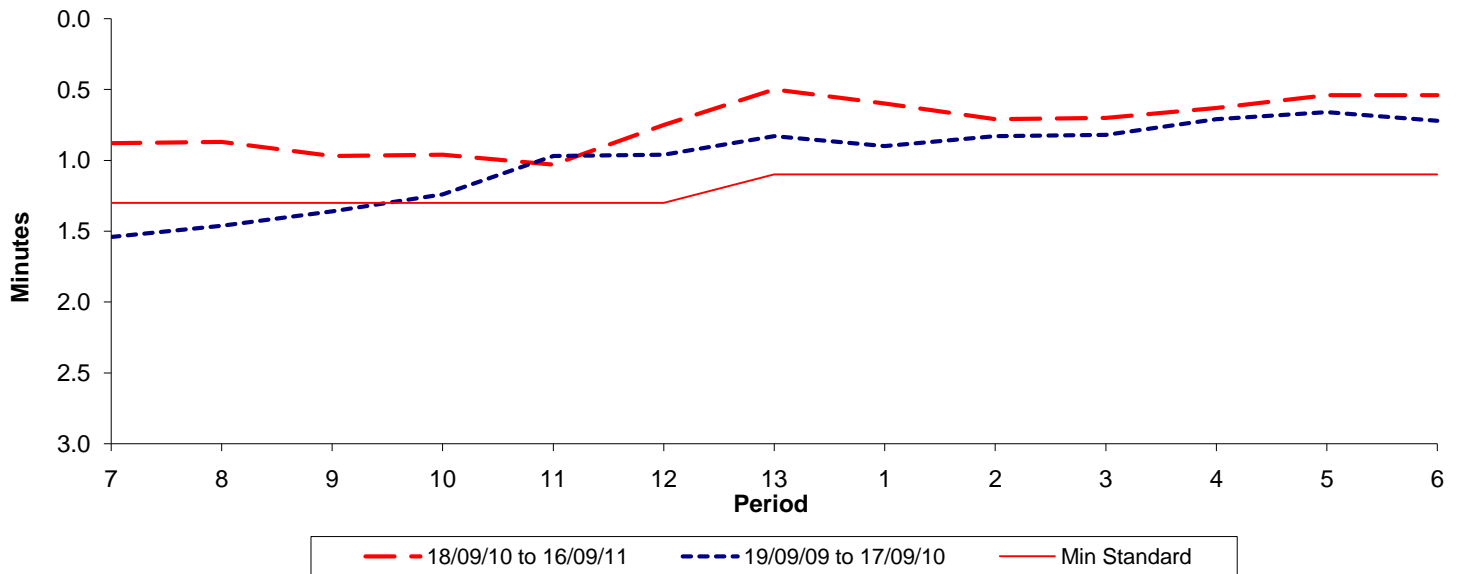




Reliability Performance (High Frequency)

Excess Waiting Time (minutes)

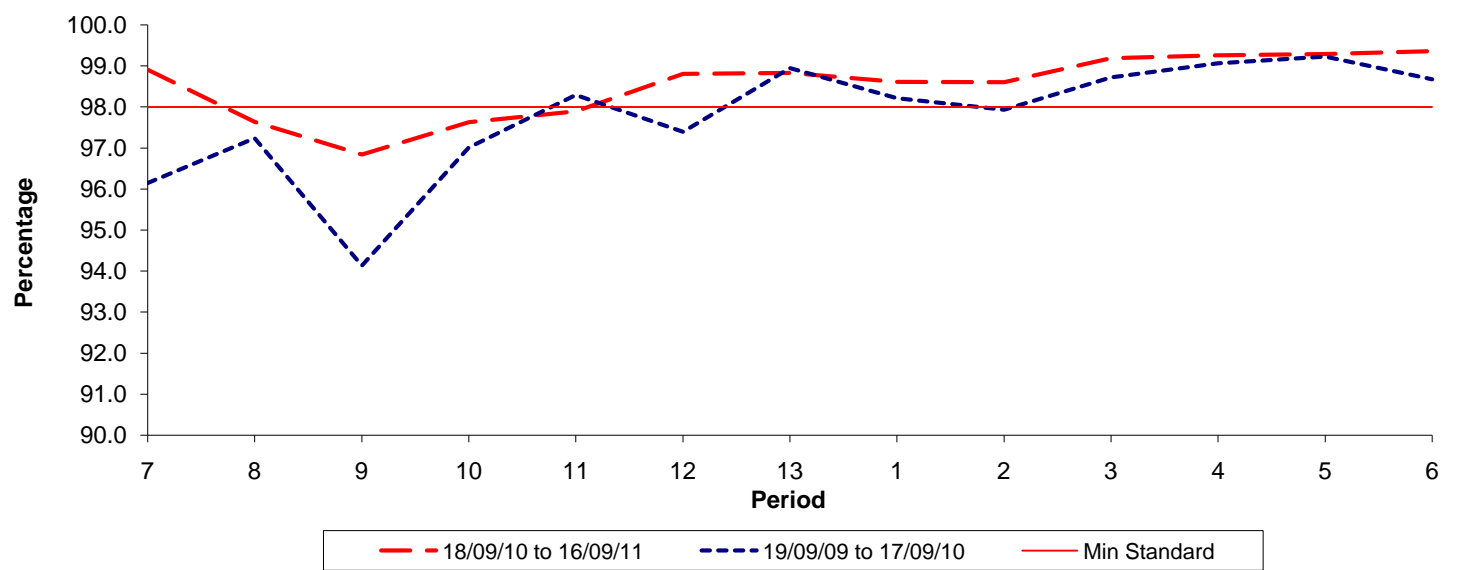


Date Range / Period	7	8	9	10	11	12	13	1	2	3	4	5	6
18/09/10 to 16/09/11	0.88	0.87	0.97	0.96	1.03	0.75	0.50	0.60	0.71	0.70	0.63	0.54	0.54
19/09/09 to 17/09/10	1.54	1.46	1.36	1.24	0.97	0.96	0.83	0.90	0.83	0.82	0.71	0.66	0.72
Min Standard	1.30	1.30	1.30	1.30	1.30	1.30	1.10	1.10	1.10	1.10	1.10	1.10	1.10

Excess Waiting Time figures are based on 12 weeks data

Kilometre Performance

% Kilometres Operated



Date Range / Period	7	8	9	10	11	12	13	1	2	3	4	5	6
18/09/10 to 16/09/11	98.91	97.63	96.84	97.63	97.89	98.81	98.83	98.61	98.60	99.19	99.26	99.29	99.36
19/09/09 to 17/09/10	96.15	97.24	94.13	97.01	98.29	97.39	98.95	98.21	97.93	98.72	99.06	99.23	98.67
Min Standard	98.00	98.00	98.00	98.00	98.00	98.00	98.00	98.00	98.00	98.00	98.00	98.00	98.00

Kilometre figures are based on 4 weeks data