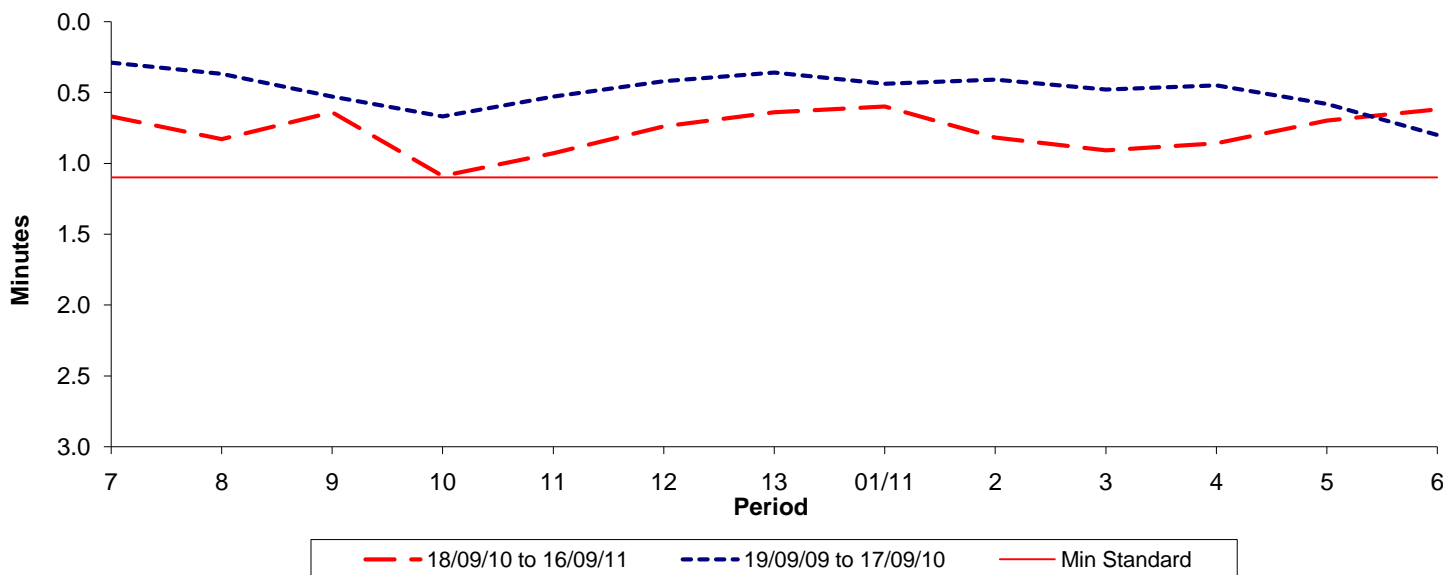




Reliability Performance (High Frequency)

Excess Waiting Time (minutes)

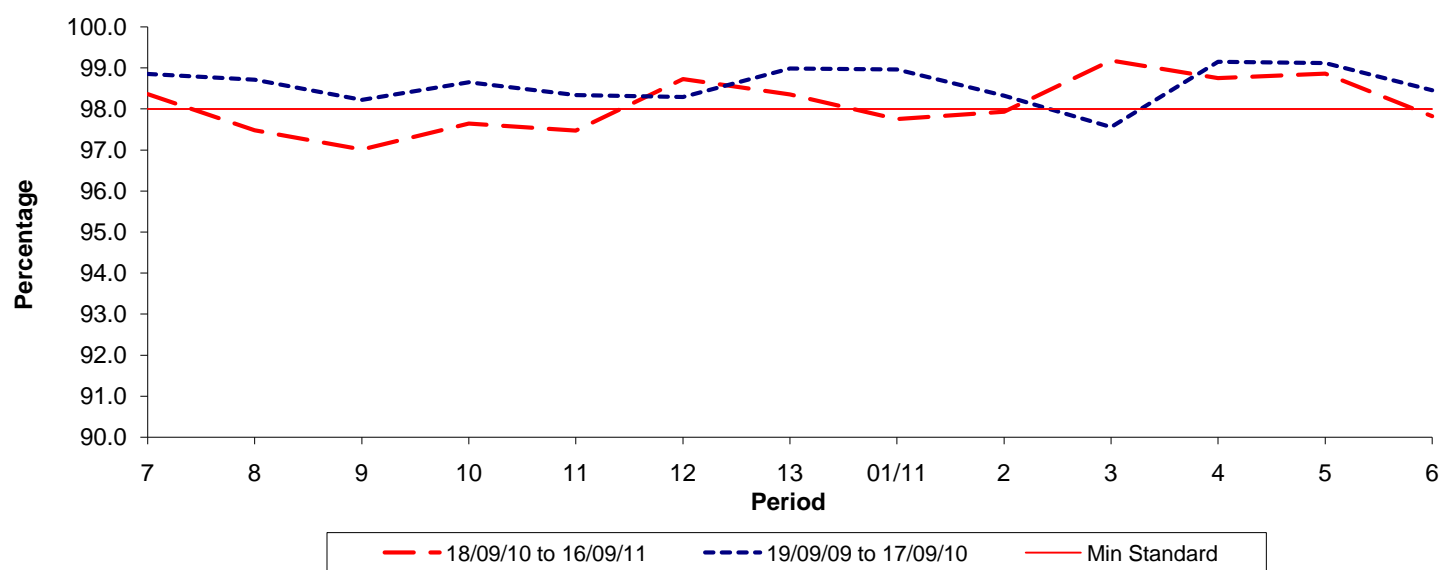


Date Range / Period	7	8	9	10	11	12	13	01/11	2	3	4	5	6
18/09/10 to 16/09/11	0.67	0.83	0.64	1.09	0.93	0.74	0.64	0.60	0.82	0.91	0.86	0.70	0.62
19/09/09 to 17/09/10	0.29	0.37	0.53	0.67	0.53	0.42	0.36	0.44	0.41	0.48	0.45	0.58	0.80
Min Standard	1.10	1.10	1.10	1.10	1.10	1.10	1.10	1.10	1.10	1.10	1.10	1.10	1.10

Excess Waiting Time figures are based on 12 weeks data

Kilometre Performance

% Kilometres Operated



Date Range / Period	7	8	9	10	11	12	13	01/11	2	3	4	5	6
18/09/10 to 16/09/11	98.36	97.48	97.01	97.64	97.47	98.73	98.35	97.75	97.93	99.18	98.75	98.86	97.82
19/09/09 to 17/09/10	98.85	98.71	98.22	98.65	98.34	98.29	98.99	98.96	98.32	97.56	99.15	99.12	98.46
Min Standard	98.00	98.00	98.00	98.00	98.00	98.00	98.00	98.00	98.00	98.00	98.00	98.00	98.00

Kilometre figures are based on 4 weeks data