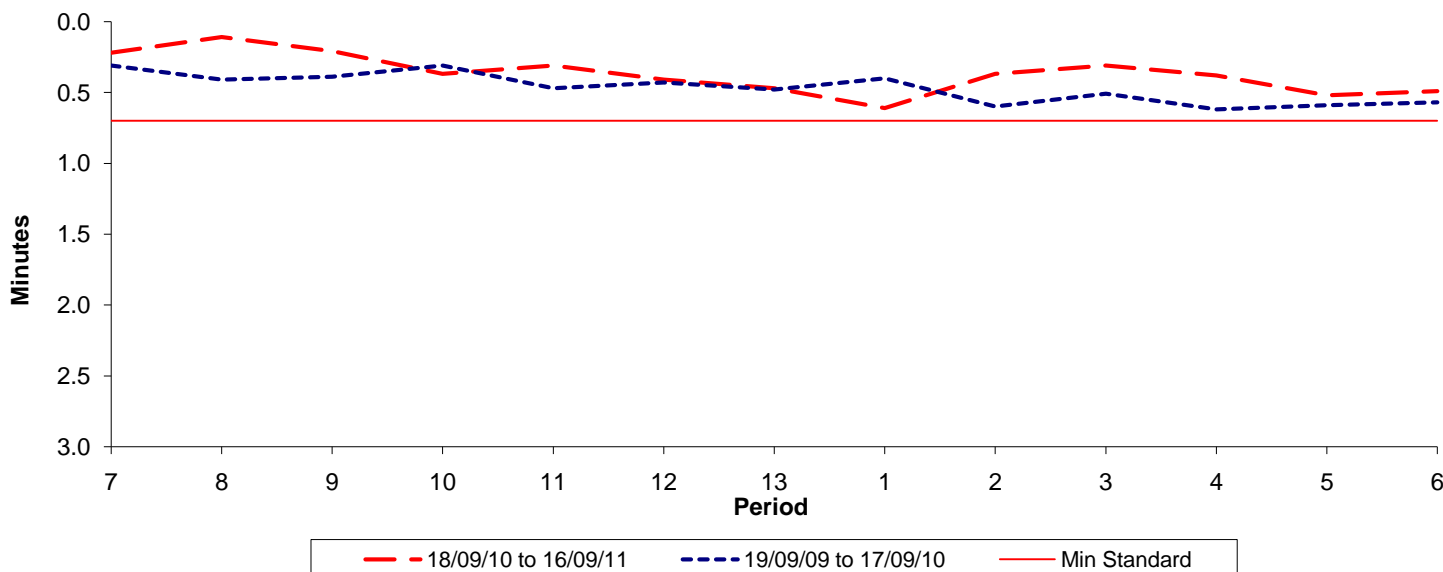




Reliability Performance (High Frequency)

Excess Waiting Time (minutes)

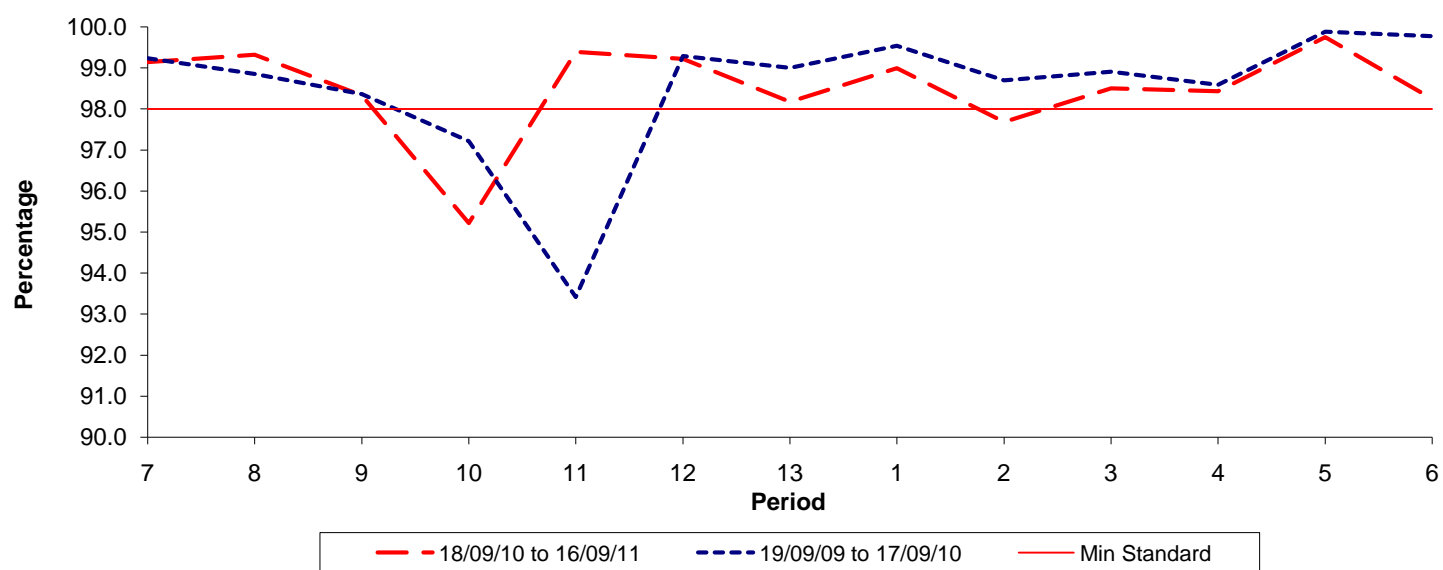


Date Range / Period	7	8	9	10	11	12	13	1	2	3	4	5	6
18/09/10 to 16/09/11	0.22	0.11	0.21	0.37	0.31	0.41	0.47	0.61	0.37	0.31	0.38	0.52	0.49
19/09/09 to 17/09/10	0.31	0.41	0.39	0.31	0.47	0.43	0.48	0.40	0.60	0.51	0.62	0.59	0.57
Min Standard	0.70	0.70	0.70	0.70	0.70	0.70	0.70	0.70	0.70	0.70	0.70	0.70	0.70

Excess Waiting Time figures are based on 12 weeks data

Kilometre Performance

% Kilometres Operated



Date Range / Period	7	8	9	10	11	12	13	1	2	3	4	5	6
18/09/10 to 16/09/11	99.14	99.32	98.33	95.21	99.39	99.22	98.17	98.99	97.68	98.50	98.43	99.75	98.24
19/09/09 to 17/09/10	99.24	98.85	98.36	97.22	93.42	99.29	99.00	99.54	98.69	98.91	98.59	99.88	99.77
Min Standard	98.00	98.00	98.00	98.00	98.00	98.00	98.00	98.00	98.00	98.00	98.00	98.00	98.00

Kilometre figures are based on 4 weeks data