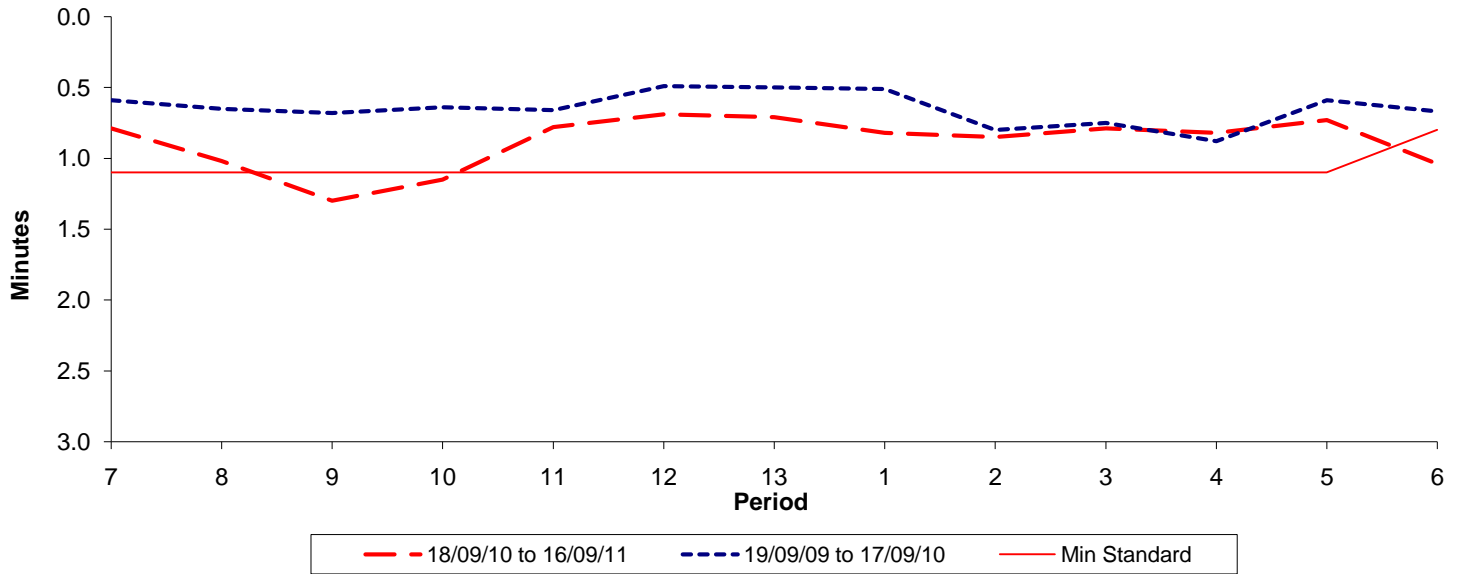




Reliability Performance (High Frequency)

Excess Waiting Time (minutes)

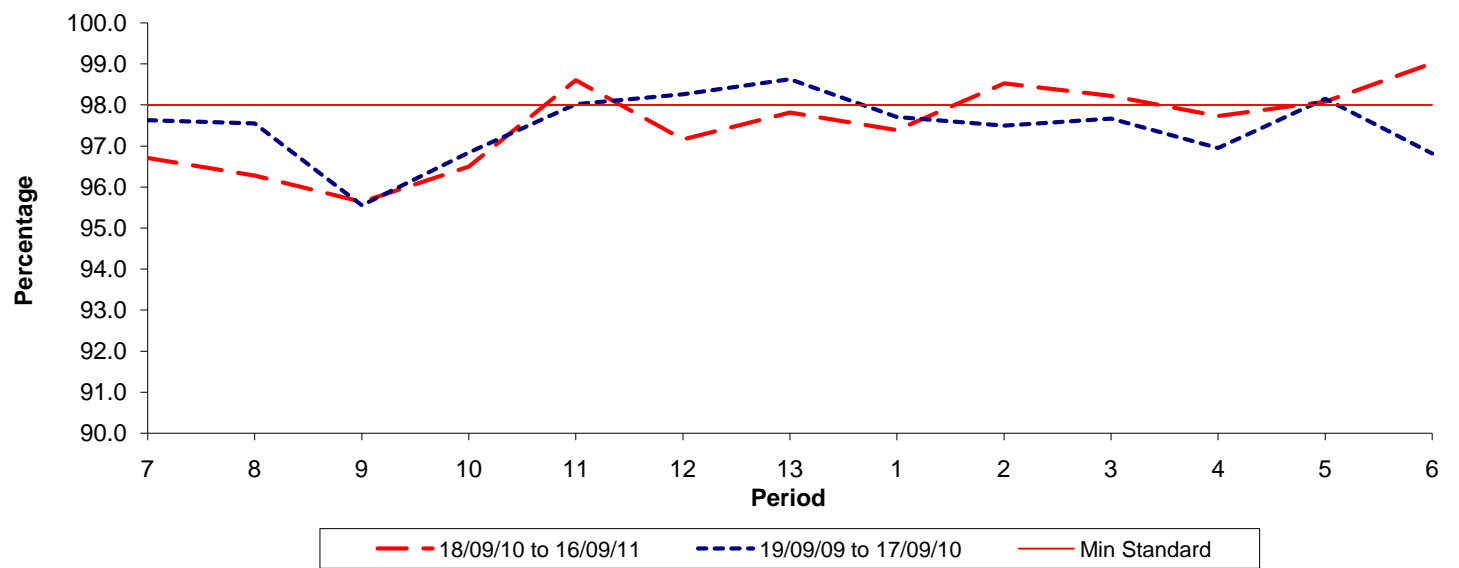


Date Range / Period	7	8	9	10	11	12	13	1	2	3	4	5	6
18/09/10 to 16/09/11	0.79	1.02	1.30	1.15	0.78	0.69	0.71	0.82	0.85	0.79	0.82	0.73	1.04
19/09/09 to 17/09/10	0.59	0.65	0.68	0.64	0.66	0.49	0.50	0.51	0.80	0.75	0.88	0.59	0.67
Min Standard	1.10	1.10	1.10	1.10	1.10	1.10	1.10	1.10	1.10	1.10	1.10	1.10	0.80

Excess Waiting Time figures are based on 12 weeks data

Kilometre Performance

% Kilometres Operated



Date Range / Period	7	8	9	10	11	12	13	1	2	3	4	5	6
18/09/10 to 16/09/11	96.71	96.28	95.64	96.50	98.61	97.16	97.82	97.39	98.53	98.22	97.73	98.08	99.02
19/09/09 to 17/09/10	97.63	97.55	95.55	96.84	98.02	98.26	98.62	97.71	97.49	97.67	96.95	98.15	96.82
Min Standard	98.00	98.00	98.00	98.00	98.00	98.00	98.00	98.00	98.00	98.00	98.00	98.00	98.00

Kilometre figures are based on 4 weeks data