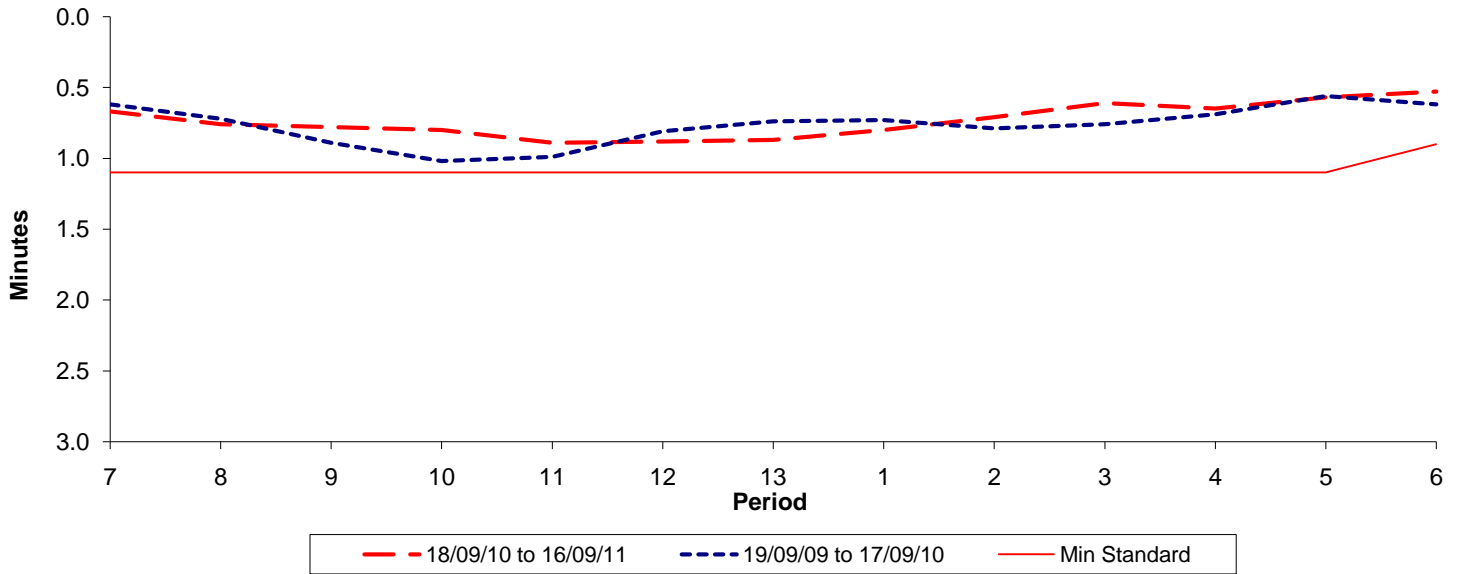




Reliability Performance (High Frequency)

Excess Waiting Time (minutes)

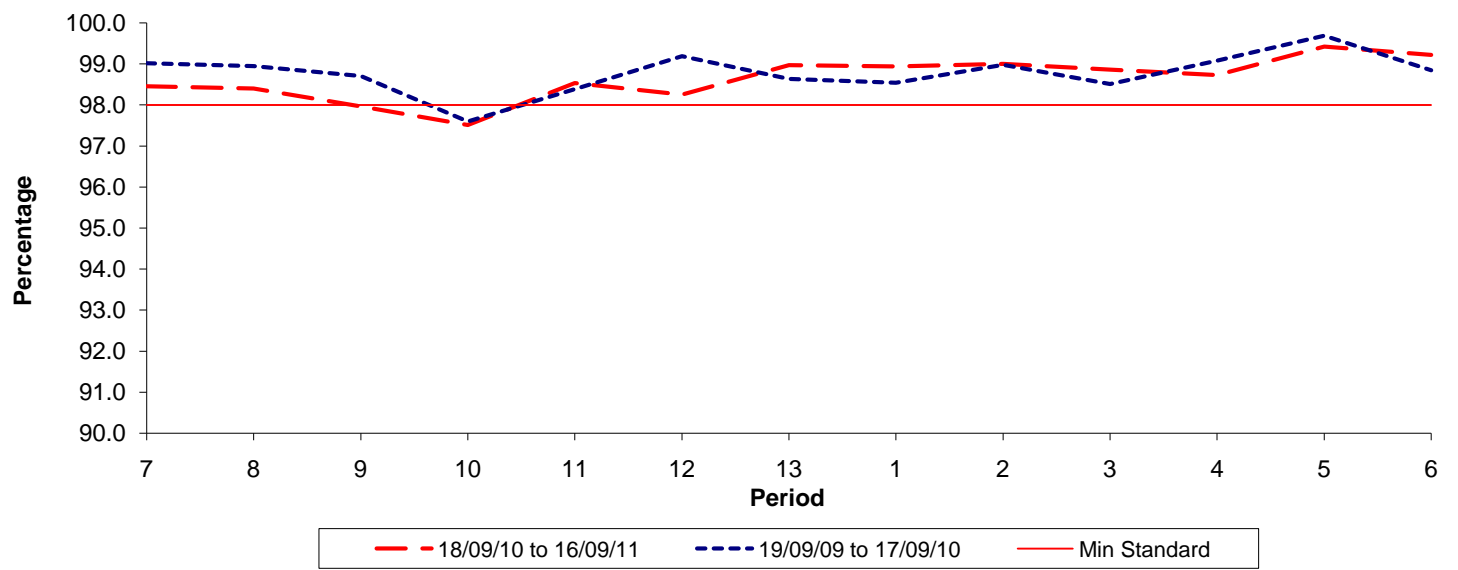


Date Range / Period	7	8	9	10	11	12	13	1	2	3	4	5	6
18/09/10 to 16/09/11	0.67	0.76	0.78	0.80	0.89	0.88	0.87	0.80	0.71	0.61	0.65	0.57	0.53
19/09/09 to 17/09/10	0.62	0.72	0.89	1.02	0.99	0.81	0.74	0.73	0.79	0.76	0.69	0.56	0.62
Min Standard	1.10	1.10	1.10	1.10	1.10	1.10	1.10	1.10	1.10	1.10	1.10	1.10	0.90

Excess Waiting Time figures are based on 12 weeks data

Kilometre Performance

% Kilometres Operated



Date Range / Period	7	8	9	10	11	12	13	1	2	3	4	5	6
18/09/10 to 16/09/11	98.45	98.40	97.96	97.51	98.53	98.25	98.97	98.94	99.00	98.86	98.73	99.42	99.22
19/09/09 to 17/09/10	99.02	98.95	98.71	97.60	98.39	99.19	98.64	98.54	98.98	98.51	99.08	99.69	98.85
Min Standard	98.00	98.00	98.00	98.00	98.00	98.00	98.00	98.00	98.00	98.00	98.00	98.00	98.00

Kilometre figures are based on 4 weeks data