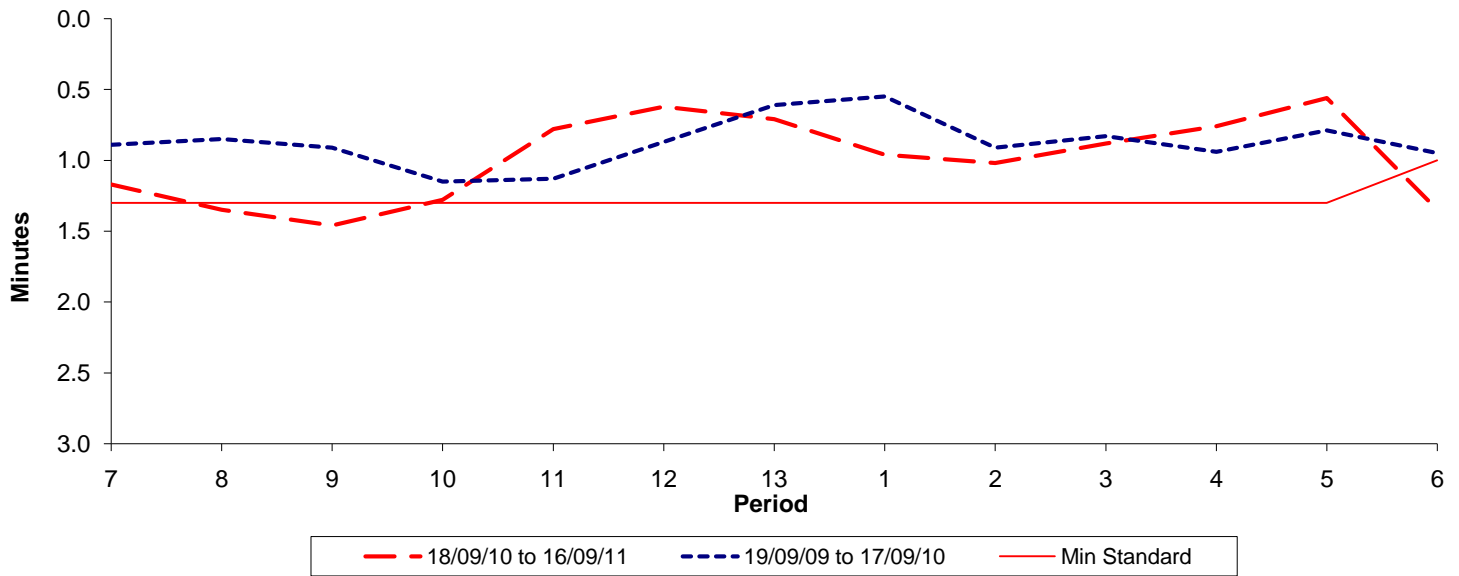




Reliability Performance (High Frequency)

Excess Waiting Time (minutes)

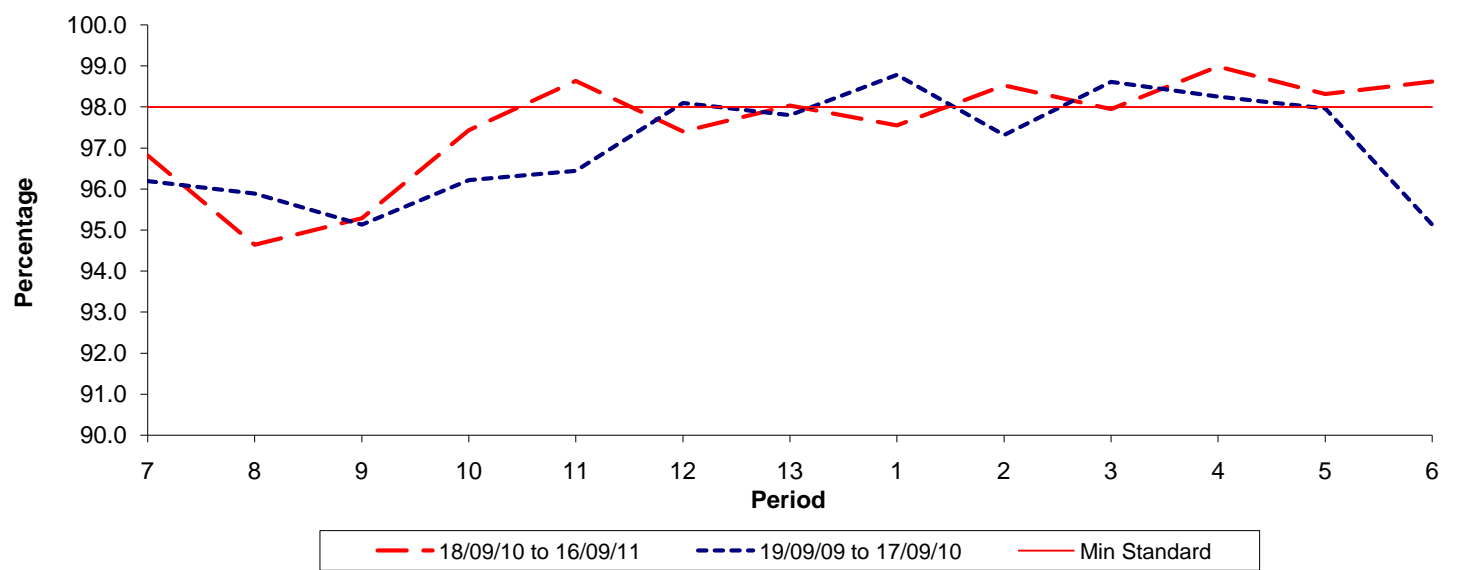


Date Range / Period	7	8	9	10	11	12	13	1	2	3	4	5	6
18/09/10 to 16/09/11	1.17	1.35	1.46	1.28	0.78	0.62	0.71	0.96	1.02	0.88	0.76	0.56	1.35
19/09/09 to 17/09/10	0.89	0.85	0.91	1.15	1.13	0.87	0.61	0.55	0.91	0.83	0.94	0.79	0.95
Min Standard	1.30	1.30	1.30	1.30	1.30	1.30	1.30	1.30	1.30	1.30	1.30	1.30	1.00

Excess Waiting Time figures are based on 12 weeks data

Kilometre Performance

% Kilometres Operated



Date Range / Period	7	8	9	10	11	12	13	1	2	3	4	5	6
18/09/10 to 16/09/11	96.82	94.64	95.29	97.44	98.64	97.41	98.04	97.55	98.53	97.95	98.99	98.32	98.62
19/09/09 to 17/09/10	96.19	95.89	95.13	96.21	96.45	98.10	97.80	98.78	97.32	98.61	98.26	97.97	95.13
Min Standard	98.00	98.00	98.00	98.00	98.00	98.00	98.00	98.00	98.00	98.00	98.00	98.00	98.00

Kilometre figures are based on 4 weeks data