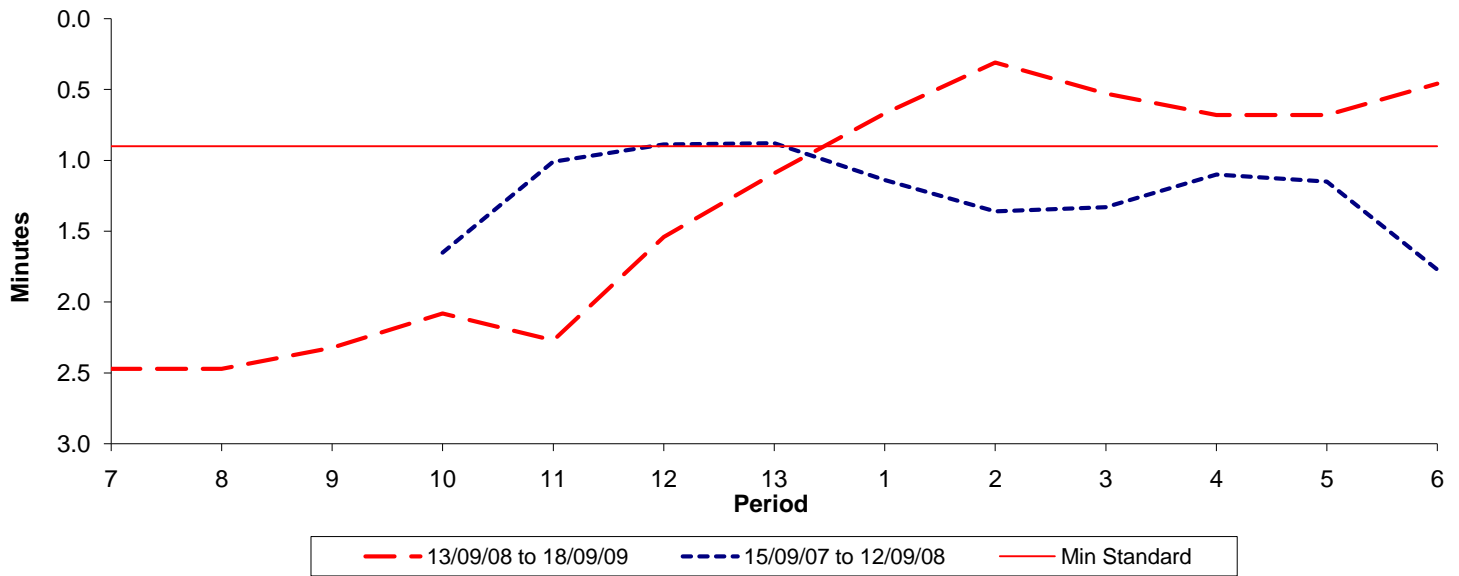




**Reliability Performance ( High Frequency )**

**Excess Waiting Time (minutes)**

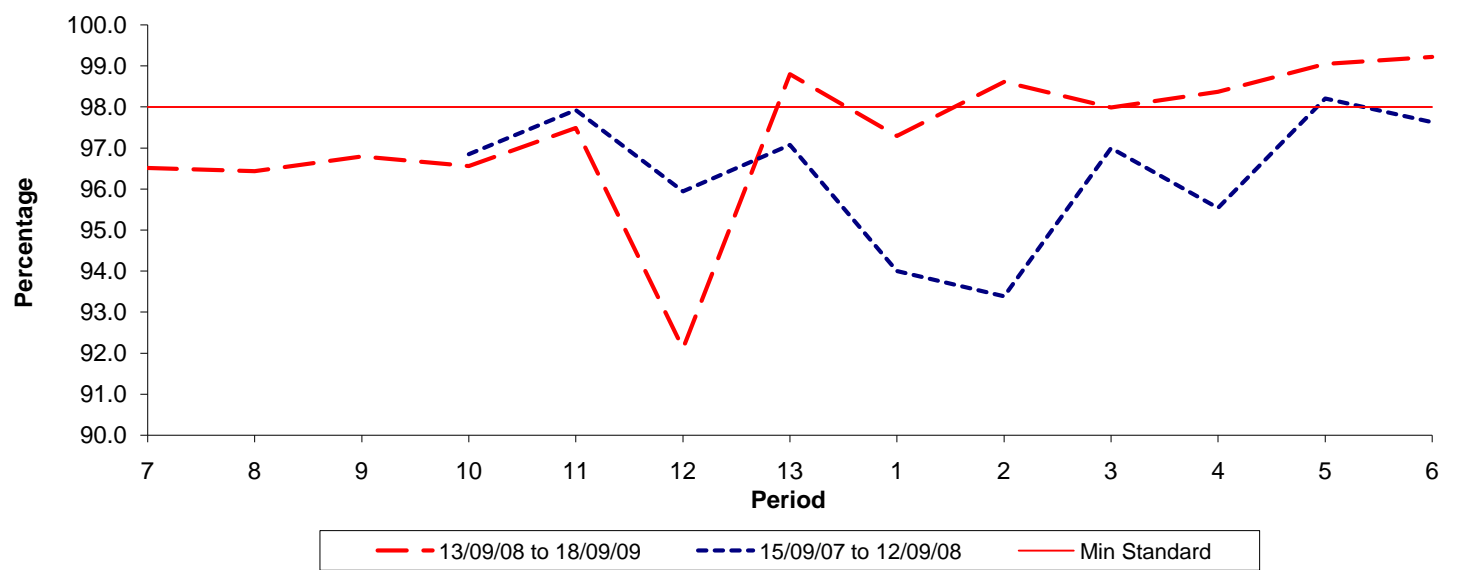


Date Range / Period	7	8	9	10	11	12	13	1	2	3	4	5	6
13/09/08 to 18/09/09	2.47	2.47	2.32	2.08	2.27	1.54	1.09	0.67	0.31	0.53	0.68	0.68	0.46
15/09/07 to 12/09/08				1.65	1.01	0.89	0.88	1.14	1.36	1.33	1.10	1.15	1.77
Min Standard	0.90	0.90	0.90	0.90	0.90	0.90	0.90	0.90	0.90	0.90	0.90	0.90	0.90

Excess Waiting Time figures are based on 12 weeks data

**Kilometre Performance**

**% Kilometres Operated**



Date Range / Period	7	8	9	10	11	12	13	1	2	3	4	5	6
13/09/08 to 18/09/09	96.51	96.43	96.79	96.56	97.49	92.11	98.80	97.29	98.61	97.99	98.37	99.05	99.22
15/09/07 to 12/09/08				96.85	97.93	95.94	97.08	94.00	93.38	97.00	95.54	98.21	97.63
Min Standard	98.00	98.00	98.00	98.00	98.00	98.00	98.00	98.00	98.00	98.00	98.00	98.00	98.00

Kilometre figures are based on 4 weeks data