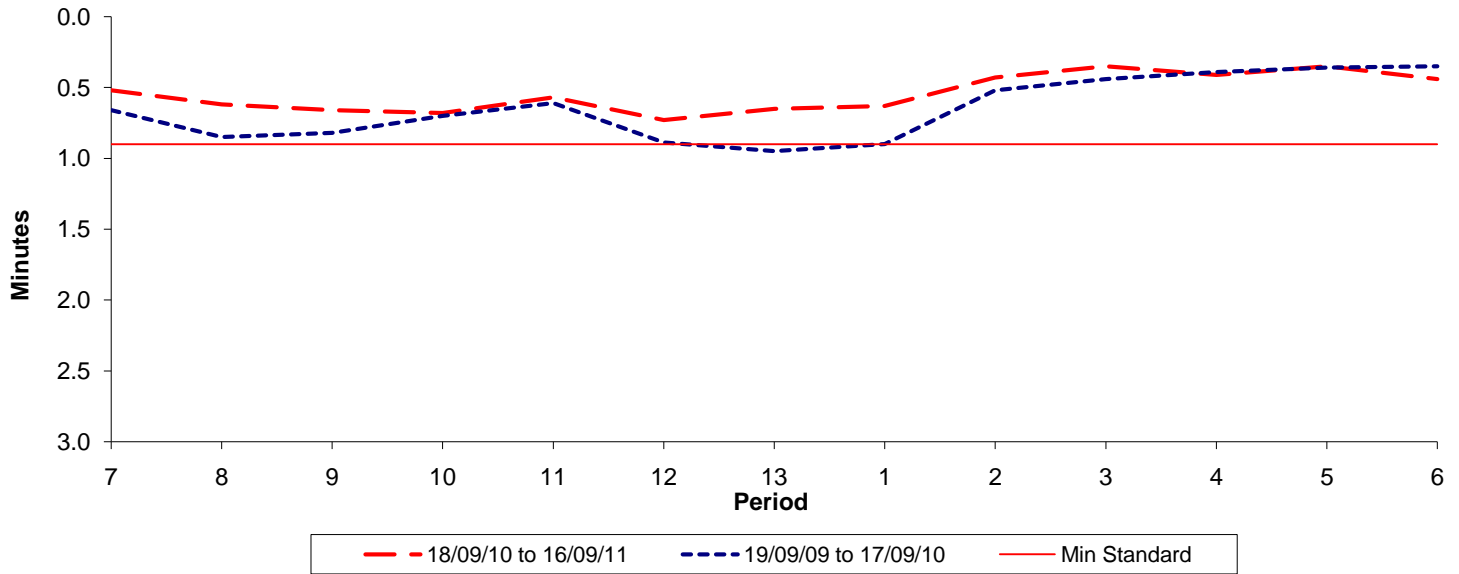




Reliability Performance (High Frequency)

Excess Waiting Time (minutes)

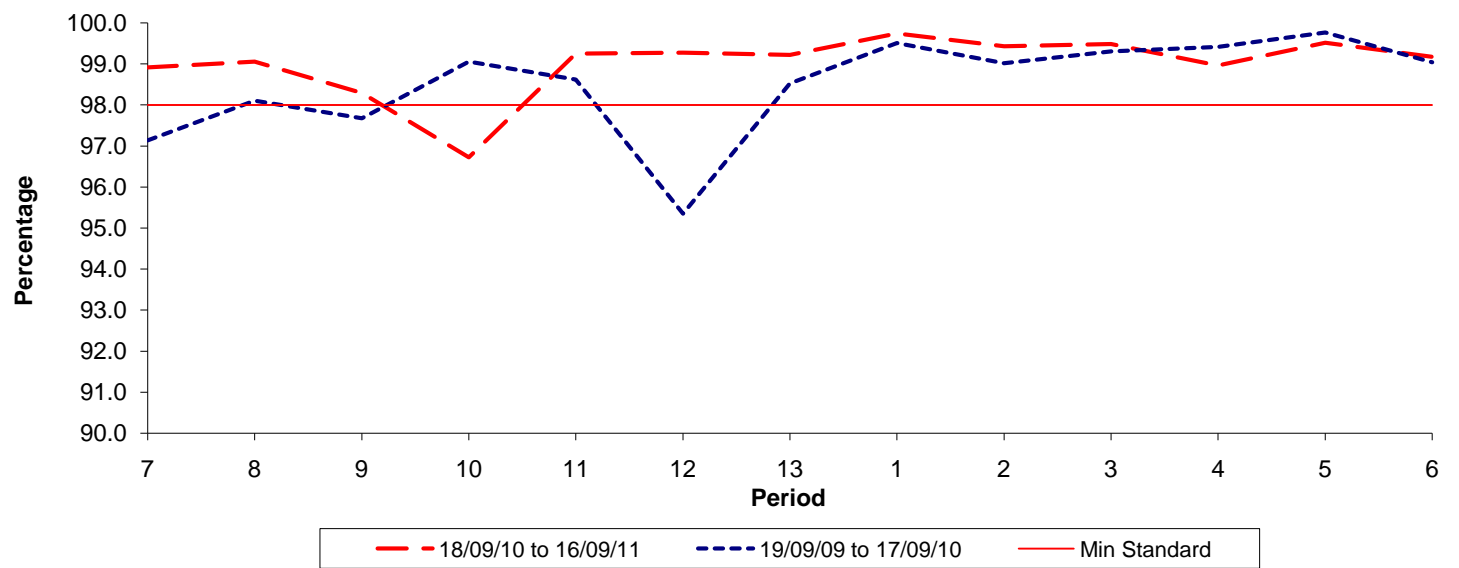


Date Range / Period	7	8	9	10	11	12	13	1	2	3	4	5	6
18/09/10 to 16/09/11	0.52	0.62	0.66	0.68	0.57	0.73	0.65	0.63	0.43	0.35	0.41	0.35	0.44
19/09/09 to 17/09/10	0.66	0.85	0.82	0.70	0.61	0.89	0.95	0.90	0.52	0.44	0.39	0.36	0.35
Min Standard	0.90	0.90	0.90	0.90	0.90	0.90	0.90	0.90	0.90	0.90	0.90	0.90	0.90

Excess Waiting Time figures are based on 12 weeks data

Kilometre Performance

% Kilometres Operated



Date Range / Period	7	8	9	10	11	12	13	1	2	3	4	5	6
18/09/10 to 16/09/11	98.91	99.05	98.29	96.72	99.25	99.27	99.22	99.74	99.43	99.48	98.96	99.51	99.17
19/09/09 to 17/09/10	97.14	98.11	97.68	99.06	98.62	95.35	98.53	99.51	99.02	99.31	99.42	99.77	99.04
Min Standard	98.00	98.00	98.00	98.00	98.00	98.00	98.00	98.00	98.00	98.00	98.00	98.00	98.00

Kilometre figures are based on 4 weeks data