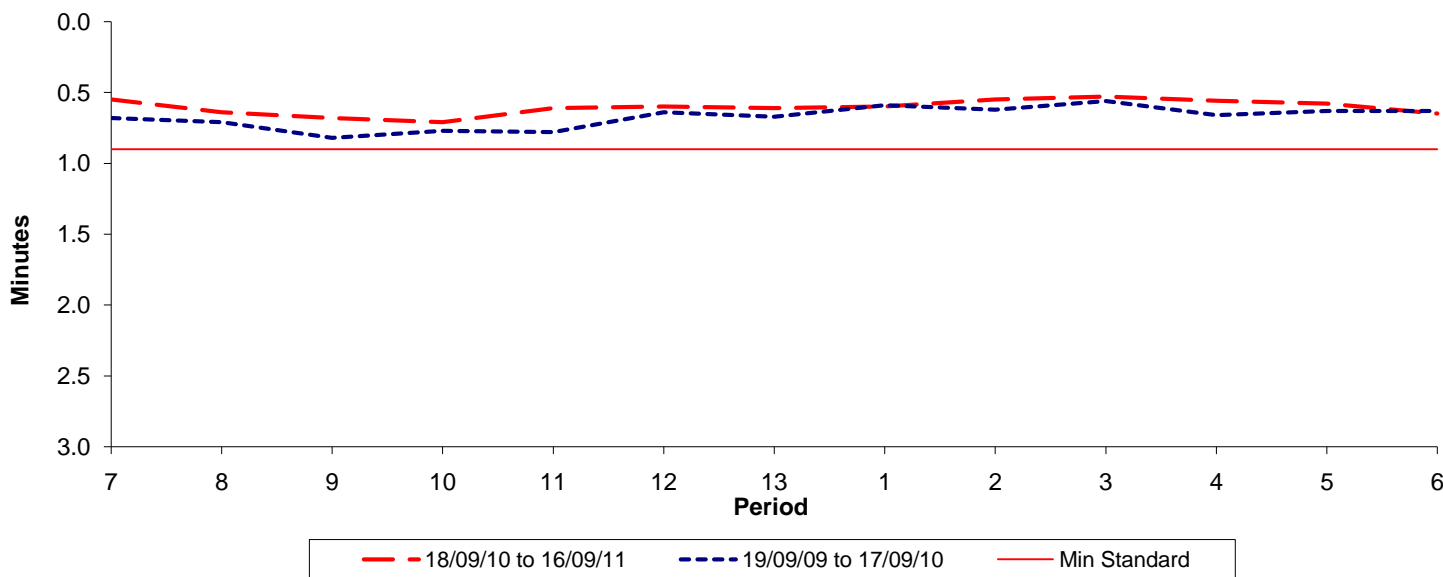




**Reliability Performance ( High Frequency )**

**Excess Waiting Time (minutes)**

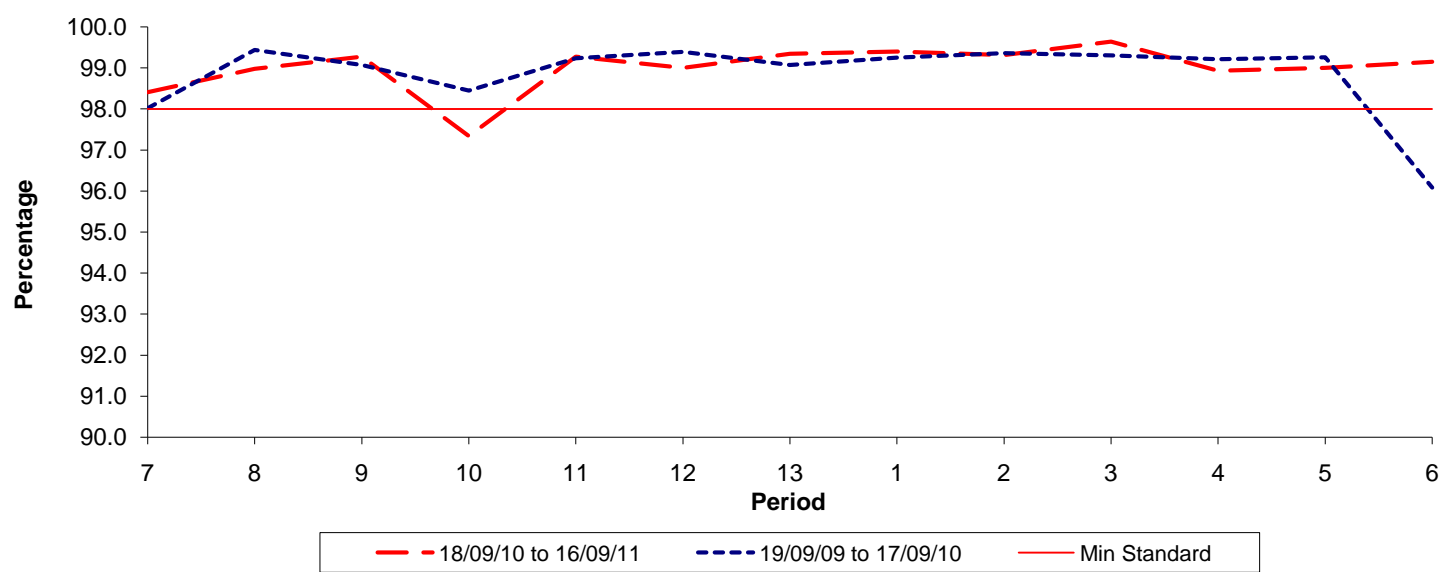


Date Range / Period	7	8	9	10	11	12	13	1	2	3	4	5	6
18/09/10 to 16/09/11	0.55	0.64	0.68	0.71	0.61	0.60	0.61	0.60	0.55	0.53	0.56	0.58	0.65
19/09/09 to 17/09/10	0.68	0.71	0.82	0.77	0.78	0.64	0.67	0.59	0.62	0.56	0.66	0.63	0.63
Min Standard	0.90	0.90	0.90	0.90	0.90	0.90	0.90	0.90	0.90	0.90	0.90	0.90	0.90

Excess Waiting Time figures are based on 12 weeks data

**Kilometre Performance**

**% Kilometres Operated**



Date Range / Period	7	8	9	10	11	12	13	1	2	3	4	5	6
18/09/10 to 16/09/11	98.41	98.98	99.27	97.34	99.27	99.00	99.34	99.40	99.31	99.64	98.93	99.00	99.15
19/09/09 to 17/09/10	98.02	99.44	99.07	98.45	99.24	99.39	99.07	99.25	99.36	99.31	99.21	99.26	96.08
Min Standard	98.00	98.00	98.00	98.00	98.00	98.00	98.00	98.00	98.00	98.00	98.00	98.00	98.00

Kilometre figures are based on 4 weeks data