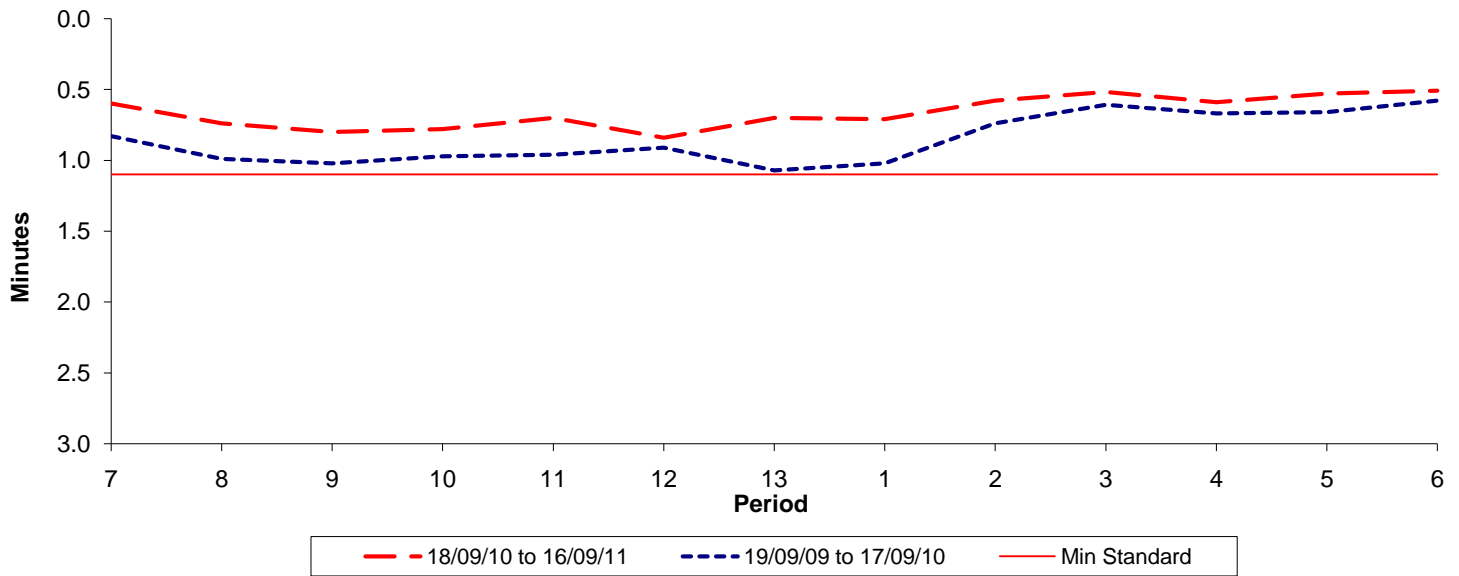




Reliability Performance (High Frequency)

Excess Waiting Time (minutes)

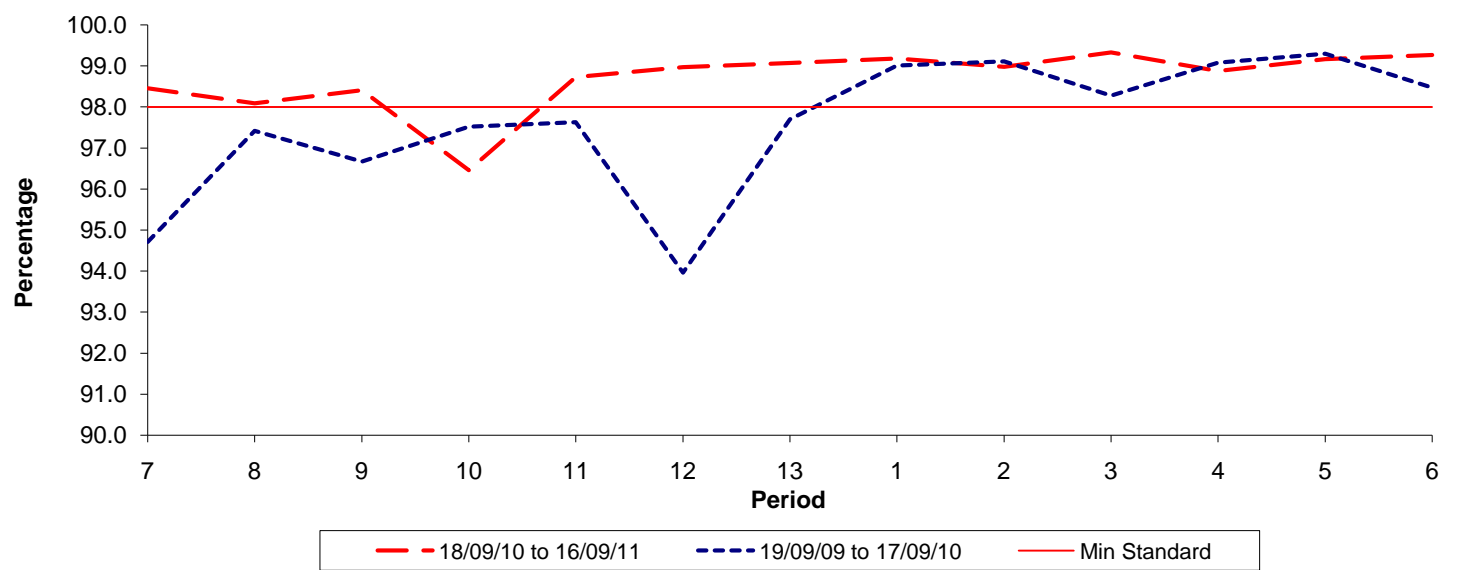


Date Range / Period	7	8	9	10	11	12	13	1	2	3	4	5	6
18/09/10 to 16/09/11	0.60	0.74	0.80	0.78	0.70	0.84	0.70	0.71	0.58	0.52	0.59	0.53	0.51
19/09/09 to 17/09/10	0.83	0.99	1.02	0.97	0.96	0.91	1.07	1.02	0.74	0.61	0.67	0.66	0.58
Min Standard	1.10	1.10	1.10	1.10	1.10	1.10	1.10	1.10	1.10	1.10	1.10	1.10	1.10

Excess Waiting Time figures are based on 12 weeks data

Kilometre Performance

% Kilometres Operated



Date Range / Period	7	8	9	10	11	12	13	1	2	3	4	5	6
18/09/10 to 16/09/11	98.46	98.09	98.41	96.46	98.73	98.97	99.07	99.18	98.98	99.33	98.88	99.17	99.27
19/09/09 to 17/09/10	94.71	97.42	96.67	97.52	97.63	93.96	97.70	99.01	99.11	98.28	99.08	99.30	98.47
Min Standard	98.00	98.00	98.00	98.00	98.00	98.00	98.00	98.00	98.00	98.00	98.00	98.00	98.00

Kilometre figures are based on 4 weeks data