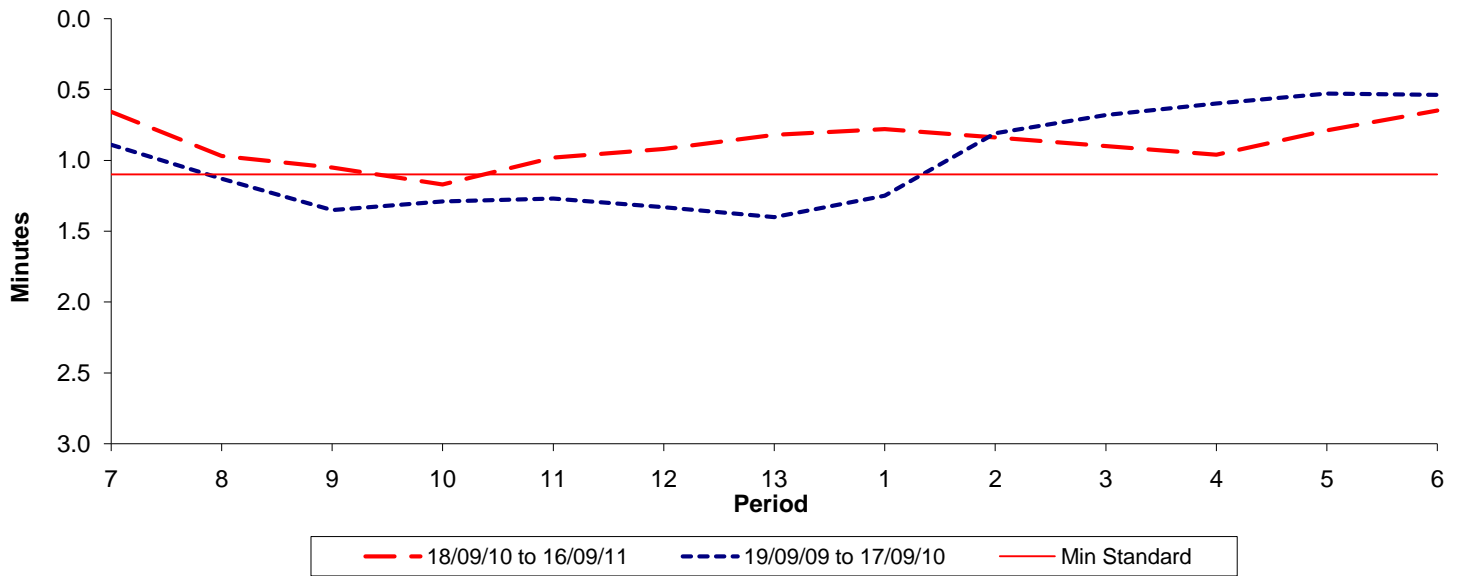




**Reliability Performance ( High Frequency )**

**Excess Waiting Time (minutes)**

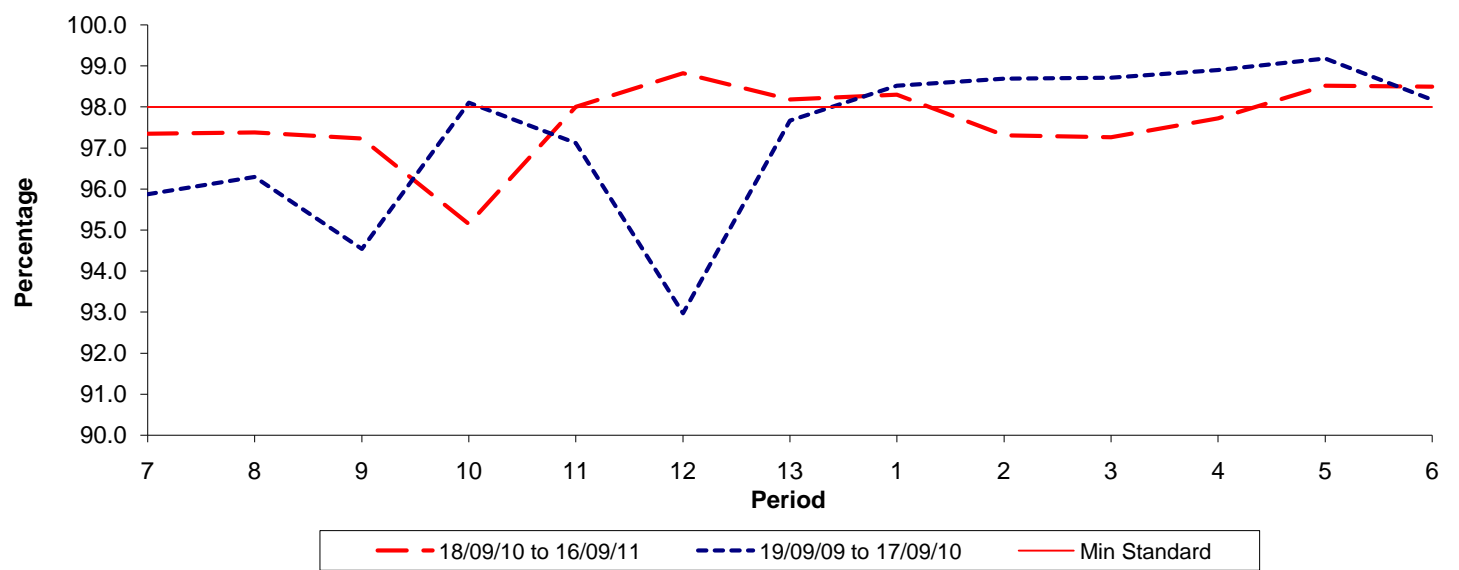


Date Range / Period	7	8	9	10	11	12	13	1	2	3	4	5	6
18/09/10 to 16/09/11	0.66	0.97	1.05	1.17	0.98	0.92	0.82	0.78	0.84	0.90	0.96	0.79	0.65
19/09/09 to 17/09/10	0.89	1.13	1.35	1.29	1.27	1.33	1.40	1.25	0.81	0.68	0.60	0.53	0.54
Min Standard	1.10	1.10	1.10	1.10	1.10	1.10	1.10	1.10	1.10	1.10	1.10	1.10	1.10

Excess Waiting Time figures are based on 12 weeks data

**Kilometre Performance**

**% Kilometres Operated**



Date Range / Period	7	8	9	10	11	12	13	1	2	3	4	5	6
18/09/10 to 16/09/11	97.35	97.38	97.23	95.15	98.00	98.82	98.18	98.30	97.31	97.26	97.72	98.52	98.49
19/09/09 to 17/09/10	95.87	96.29	94.54	98.10	97.12	92.97	97.67	98.52	98.69	98.71	98.90	99.18	98.17
Min Standard	98.00	98.00	98.00	98.00	98.00	98.00	98.00	98.00	98.00	98.00	98.00	98.00	98.00

Kilometre figures are based on 4 weeks data