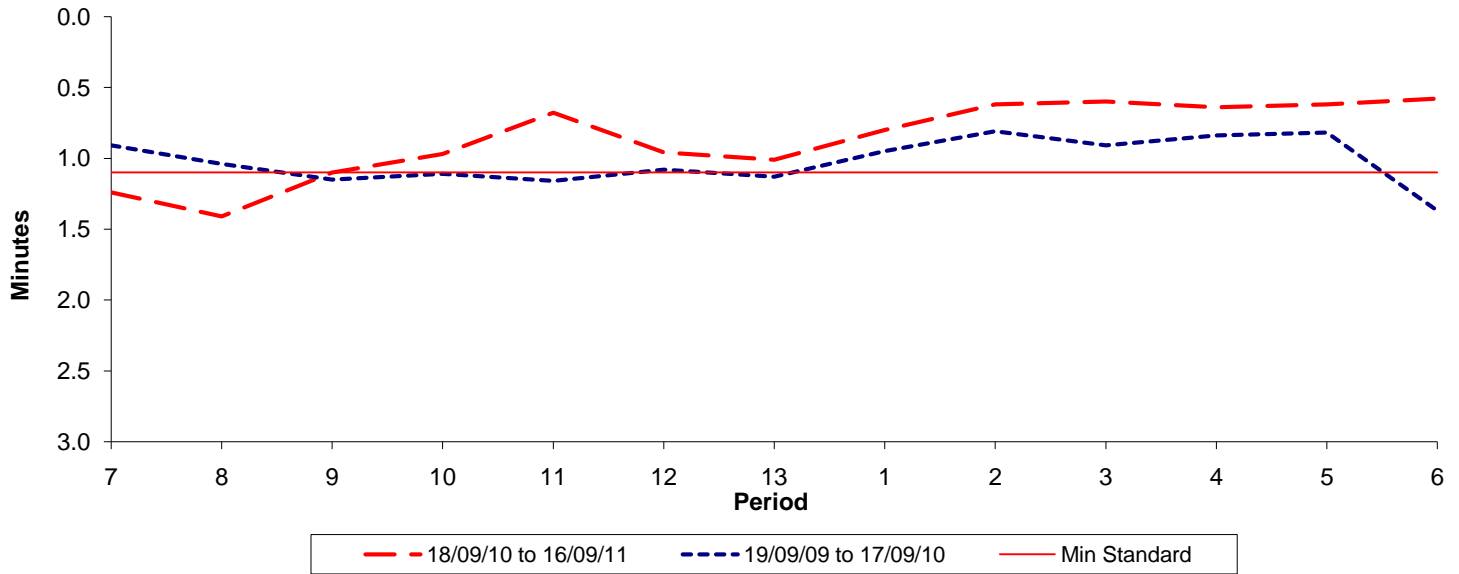




Reliability Performance (High Frequency)

Excess Waiting Time (minutes)

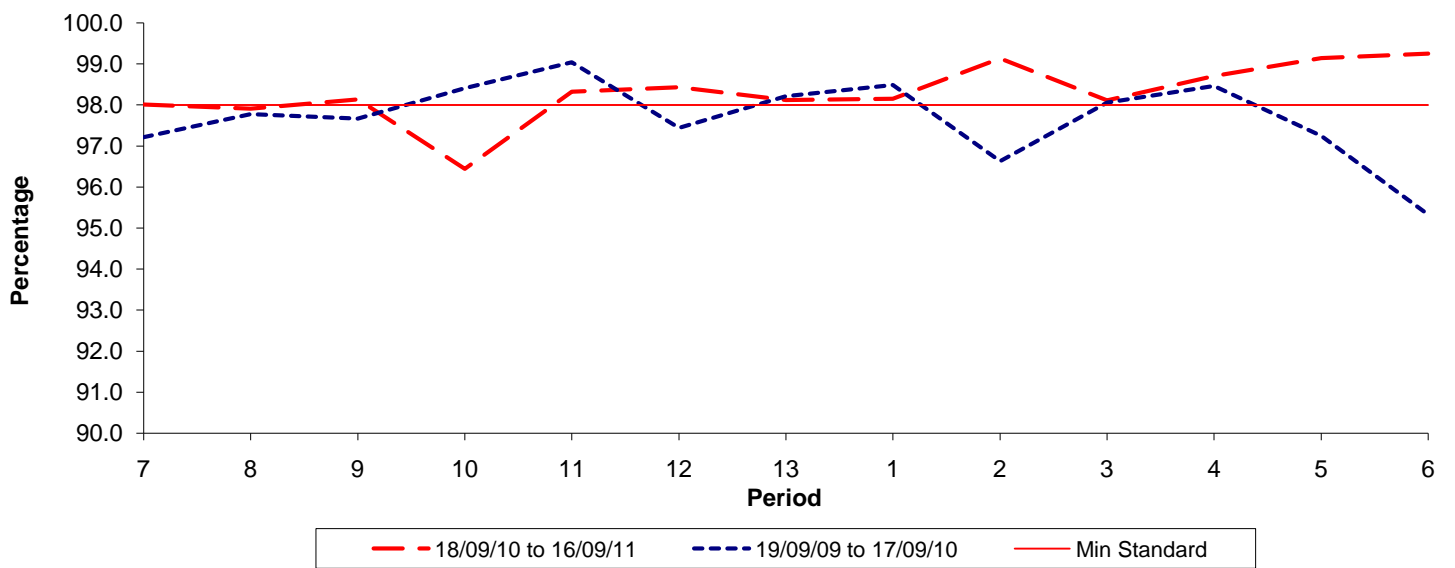


Date Range / Period	7	8	9	10	11	12	13	1	2	3	4	5	6
18/09/10 to 16/09/11	1.24	1.41	1.10	0.97	0.68	0.96	1.01	0.80	0.62	0.60	0.64	0.62	0.58
19/09/09 to 17/09/10	0.91	1.04	1.15	1.11	1.16	1.08	1.13	0.95	0.81	0.91	0.84	0.82	1.37
Min Standard	1.10	1.10	1.10	1.10	1.10	1.10	1.10	1.10	1.10	1.10	1.10	1.10	1.10

Excess Waiting Time figures are based on 12 weeks data

Kilometre Performance

% Kilometres Operated



Date Range / Period	7	8	9	10	11	12	13	1	2	3	4	5	6
18/09/10 to 16/09/11	98.01	97.91	98.13	96.44	98.32	98.43	98.12	98.15	99.13	98.11	98.70	99.14	99.25
19/09/09 to 17/09/10	97.22	97.78	97.67	98.41	99.04	97.44	98.21	98.49	96.63	98.06	98.46	97.25	95.33
Min Standard	98.00	98.00	98.00	98.00	98.00	98.00	98.00	98.00	98.00	98.00	98.00	98.00	98.00

Kilometre figures are based on 4 weeks data