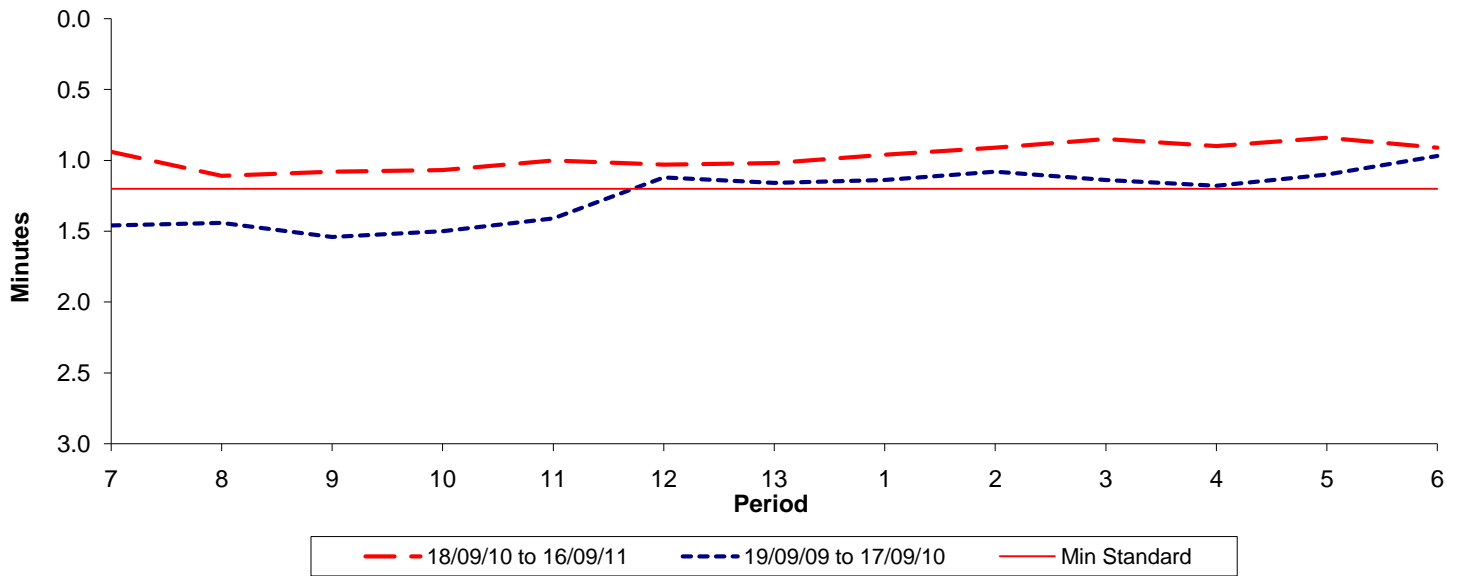




Reliability Performance (High Frequency)

Excess Waiting Time (minutes)

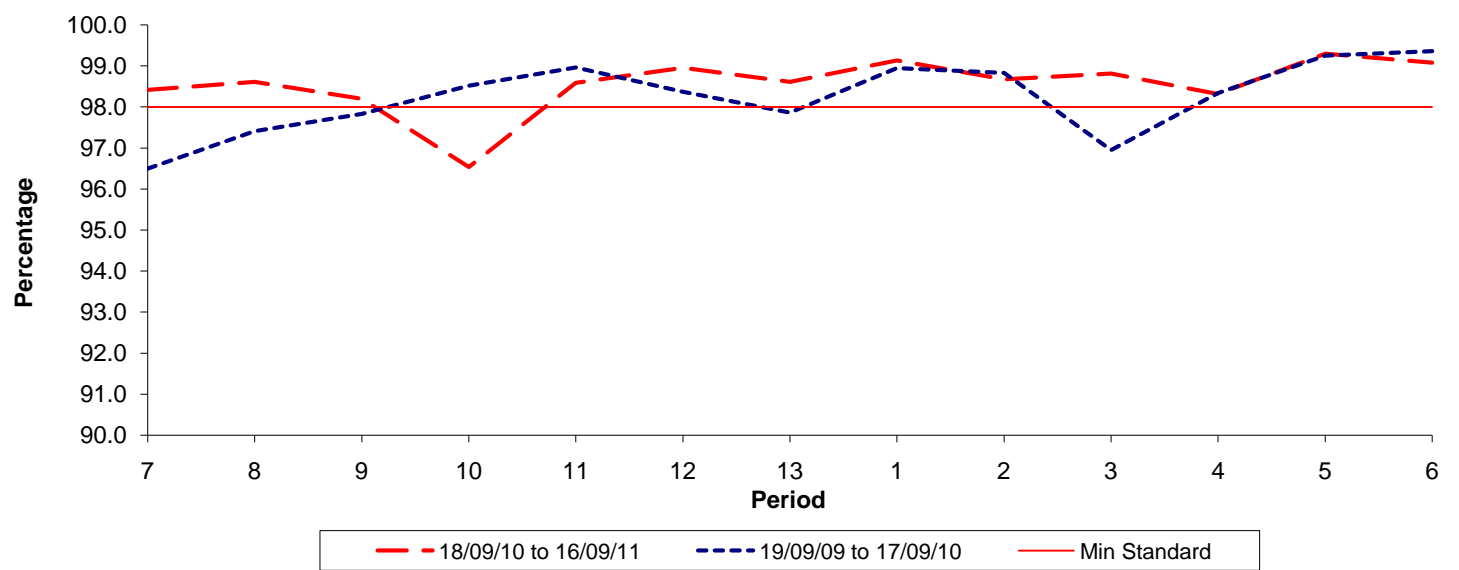


Date Range / Period	7	8	9	10	11	12	13	1	2	3	4	5	6
18/09/10 to 16/09/11	0.94	1.11	1.08	1.07	1.00	1.03	1.02	0.96	0.91	0.85	0.90	0.84	0.91
19/09/09 to 17/09/10	1.46	1.44	1.54	1.50	1.41	1.12	1.16	1.14	1.08	1.14	1.18	1.10	0.97
Min Standard	1.20	1.20	1.20	1.20	1.20	1.20	1.20	1.20	1.20	1.20	1.20	1.20	1.20

Excess Waiting Time figures are based on 12 weeks data

Kilometre Performance

% Kilometres Operated



Date Range / Period	7	8	9	10	11	12	13	1	2	3	4	5	6
18/09/10 to 16/09/11	98.42	98.61	98.20	96.54	98.59	98.96	98.61	99.14	98.68	98.82	98.32	99.30	99.08
19/09/09 to 17/09/10	96.50	97.41	97.83	98.52	98.96	98.37	97.86	98.95	98.83	96.95	98.34	99.25	99.36
Min Standard	98.00	98.00	98.00	98.00	98.00	98.00	98.00	98.00	98.00	98.00	98.00	98.00	98.00

Kilometre figures are based on 4 weeks data