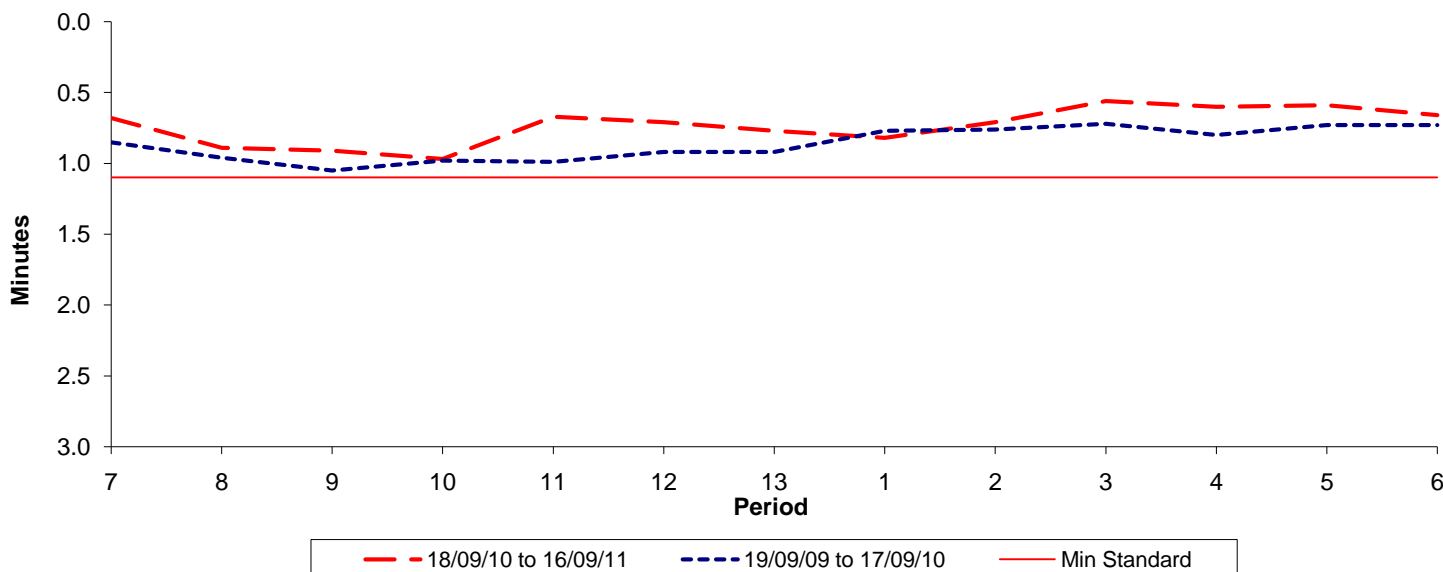




Reliability Performance (High Frequency)

Excess Waiting Time (minutes)

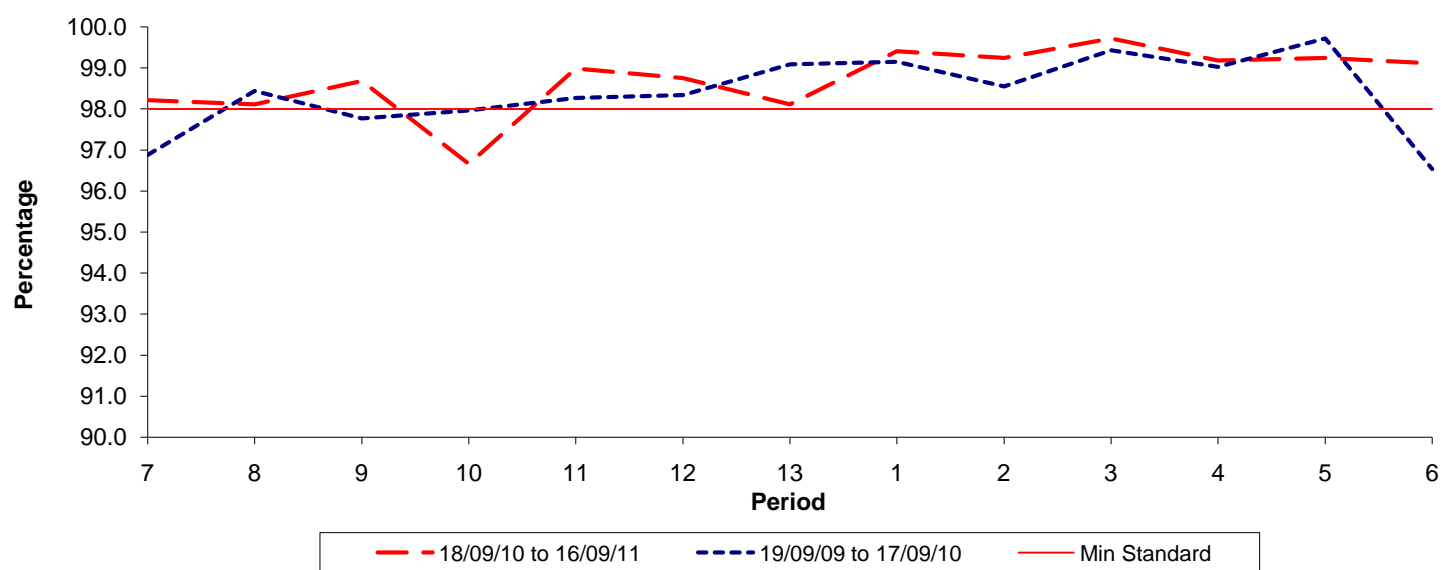


Date Range / Period	7	8	9	10	11	12	13	1	2	3	4	5	6
18/09/10 to 16/09/11	0.68	0.89	0.91	0.97	0.67	0.71	0.77	0.82	0.71	0.56	0.60	0.59	0.66
19/09/09 to 17/09/10	0.85	0.96	1.05	0.98	0.99	0.92	0.92	0.77	0.76	0.72	0.80	0.73	0.73
Min Standard	1.10	1.10	1.10	1.10	1.10	1.10	1.10	1.10	1.10	1.10	1.10	1.10	1.10

Excess Waiting Time figures are based on 12 weeks data

Kilometre Performance

% Kilometres Operated



Date Range / Period	7	8	9	10	11	12	13	1	2	3	4	5	6
18/09/10 to 16/09/11	98.21	98.11	98.68	96.66	98.99	98.75	98.11	99.41	99.24	99.72	99.18	99.24	99.11
19/09/09 to 17/09/10	96.88	98.44	97.77	97.97	98.27	98.34	99.09	99.15	98.55	99.43	99.03	99.72	96.54
Min Standard	98.00	98.00	98.00	98.00	98.00	98.00	98.00	98.00	98.00	98.00	98.00	98.00	98.00

Kilometre figures are based on 4 weeks data