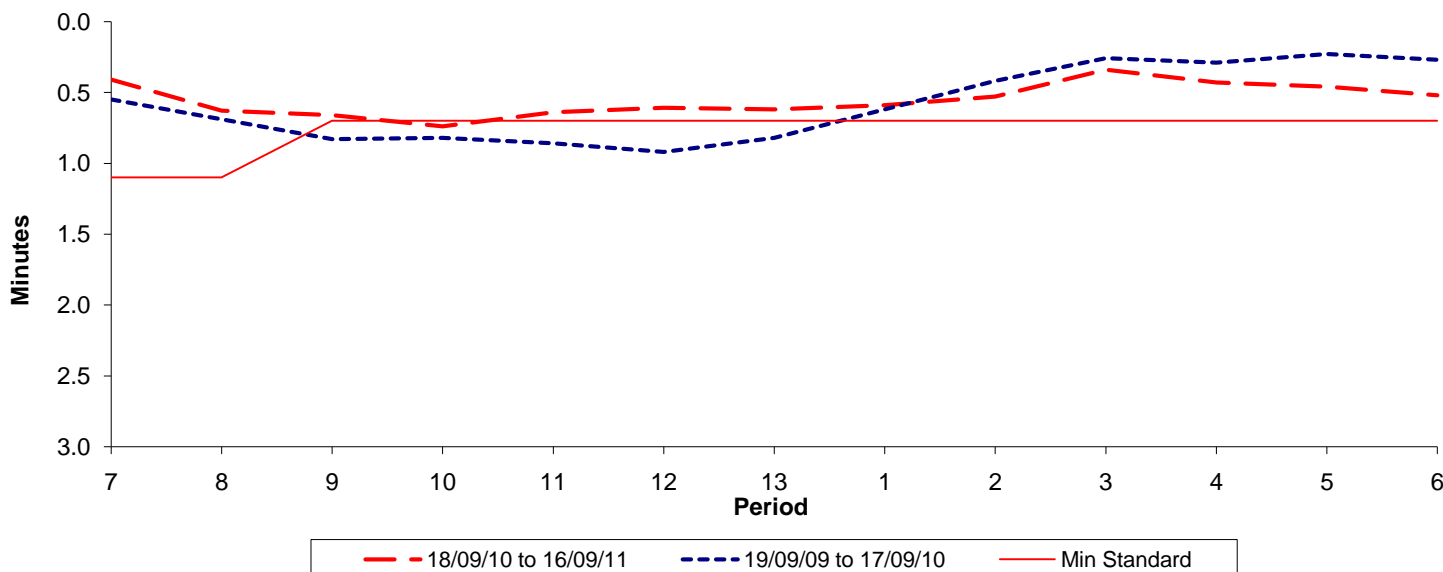




Reliability Performance (High Frequency)

Excess Waiting Time (minutes)

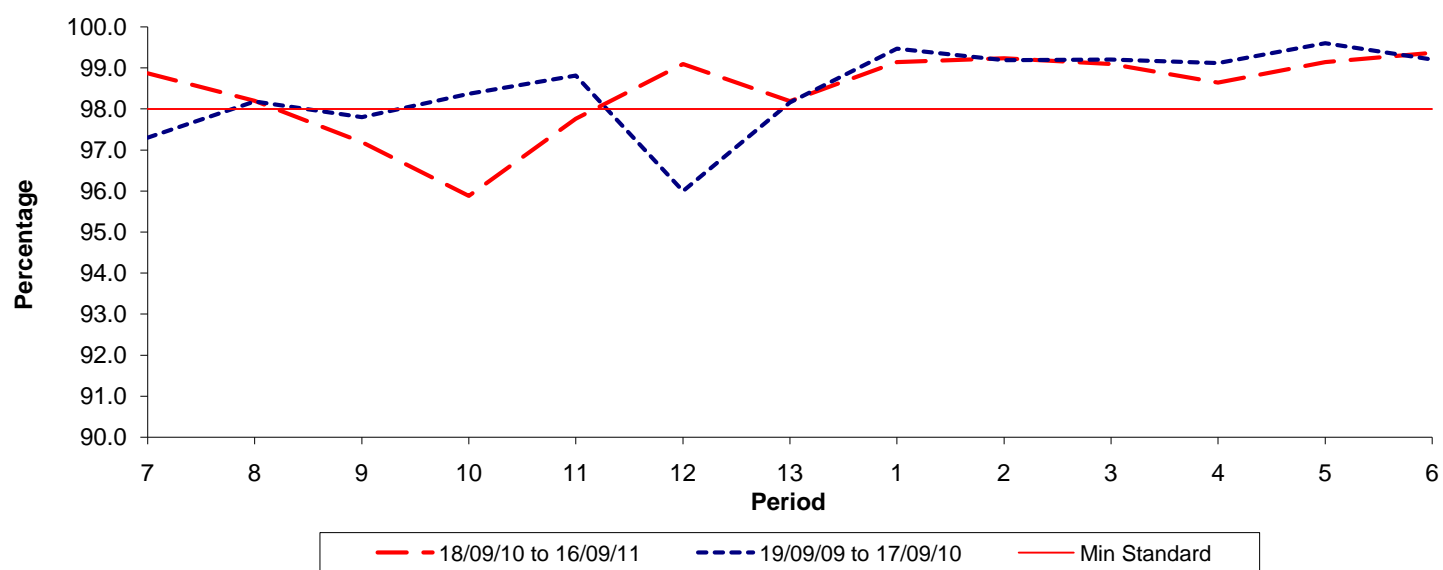


Date Range / Period	7	8	9	10	11	12	13	1	2	3	4	5	6
18/09/10 to 16/09/11	0.41	0.63	0.66	0.74	0.64	0.61	0.62	0.59	0.53	0.34	0.43	0.46	0.52
19/09/09 to 17/09/10	0.55	0.69	0.83	0.82	0.86	0.92	0.82	0.62	0.42	0.26	0.29	0.23	0.27
Min Standard	1.10	1.10	0.70	0.70	0.70	0.70	0.70	0.70	0.70	0.70	0.70	0.70	0.70

Excess Waiting Time figures are based on 12 weeks data

Kilometre Performance

% Kilometres Operated



Date Range / Period	7	8	9	10	11	12	13	1	2	3	4	5	6
18/09/10 to 16/09/11	98.87	98.20	97.19	95.88	97.76	99.10	98.19	99.14	99.24	99.10	98.64	99.14	99.37
19/09/09 to 17/09/10	97.30	98.18	97.80	98.37	98.81	96.00	98.16	99.47	99.19	99.20	99.12	99.60	99.20
Min Standard	98.00	98.00	98.00	98.00	98.00	98.00	98.00	98.00	98.00	98.00	98.00	98.00	98.00

Kilometre figures are based on 4 weeks data