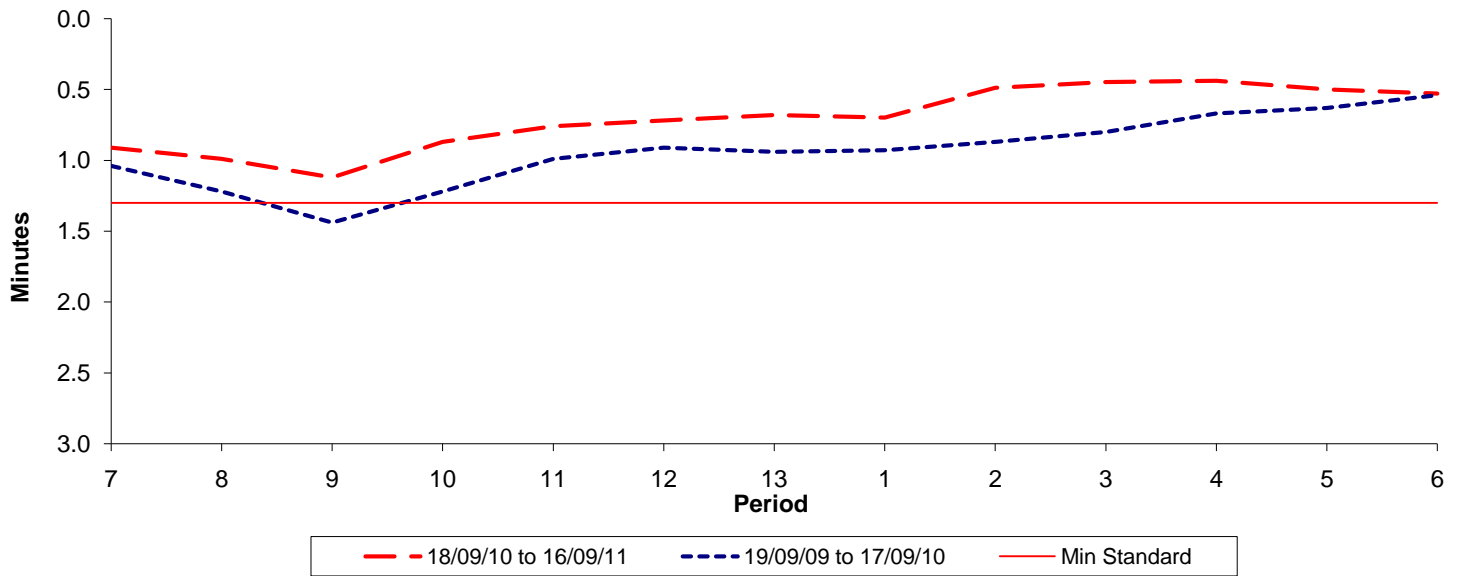




**Reliability Performance ( High Frequency )**

**Excess Waiting Time (minutes)**

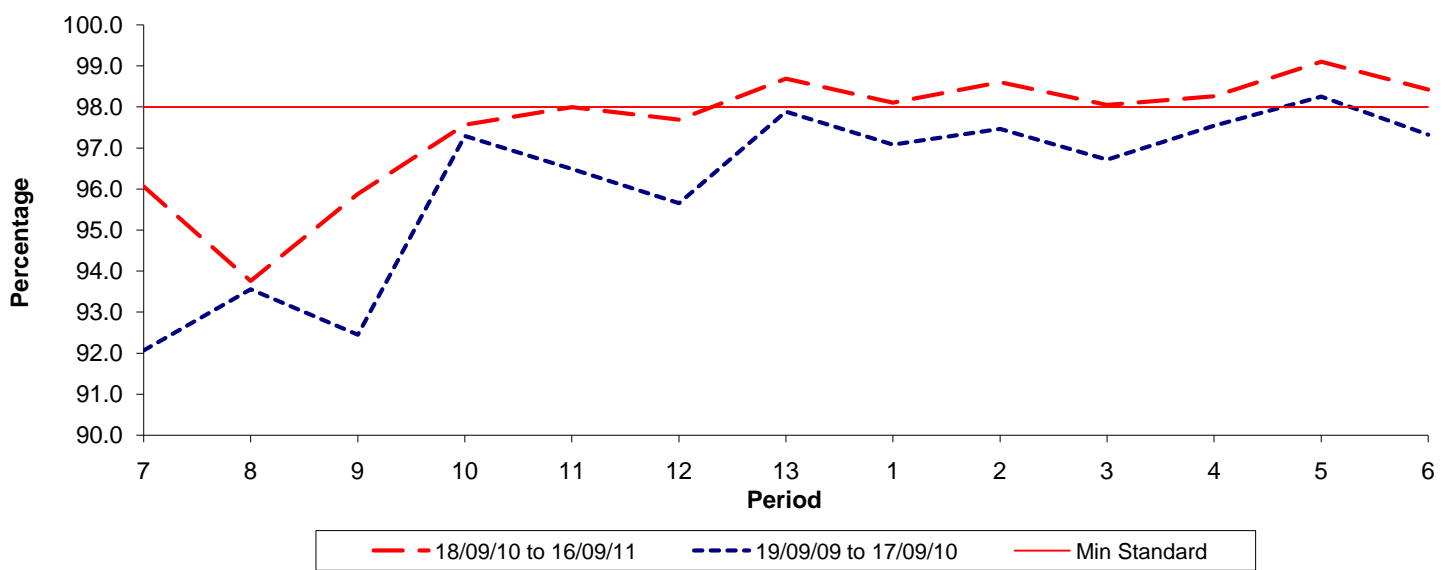


Date Range / Period	7	8	9	10	11	12	13	1	2	3	4	5	6
18/09/10 to 16/09/11	0.91	0.99	1.12	0.87	0.76	0.72	0.68	0.70	0.49	0.45	0.44	0.50	0.53
19/09/09 to 17/09/10	1.04	1.22	1.44	1.22	0.99	0.91	0.94	0.93	0.87	0.80	0.67	0.63	0.54
Min Standard	1.30	1.30	1.30	1.30	1.30	1.30	1.30	1.30	1.30	1.30	1.30	1.30	1.30

Excess Waiting Time figures are based on 12 weeks data

**Kilometre Performance**

**% Kilometres Operated**



Date Range / Period	7	8	9	10	11	12	13	1	2	3	4	5	6
18/09/10 to 16/09/11	96.06	93.75	95.88	97.56	97.99	97.69	98.69	98.10	98.60	98.05	98.26	99.10	98.42
19/09/09 to 17/09/10	92.06	93.55	92.45	97.29	96.49	95.65	97.89	97.08	97.46	96.72	97.54	98.25	97.32
Min Standard	98.00	98.00	98.00	98.00	98.00	98.00	98.00	98.00	98.00	98.00	98.00	98.00	98.00

Kilometre figures are based on 4 weeks data