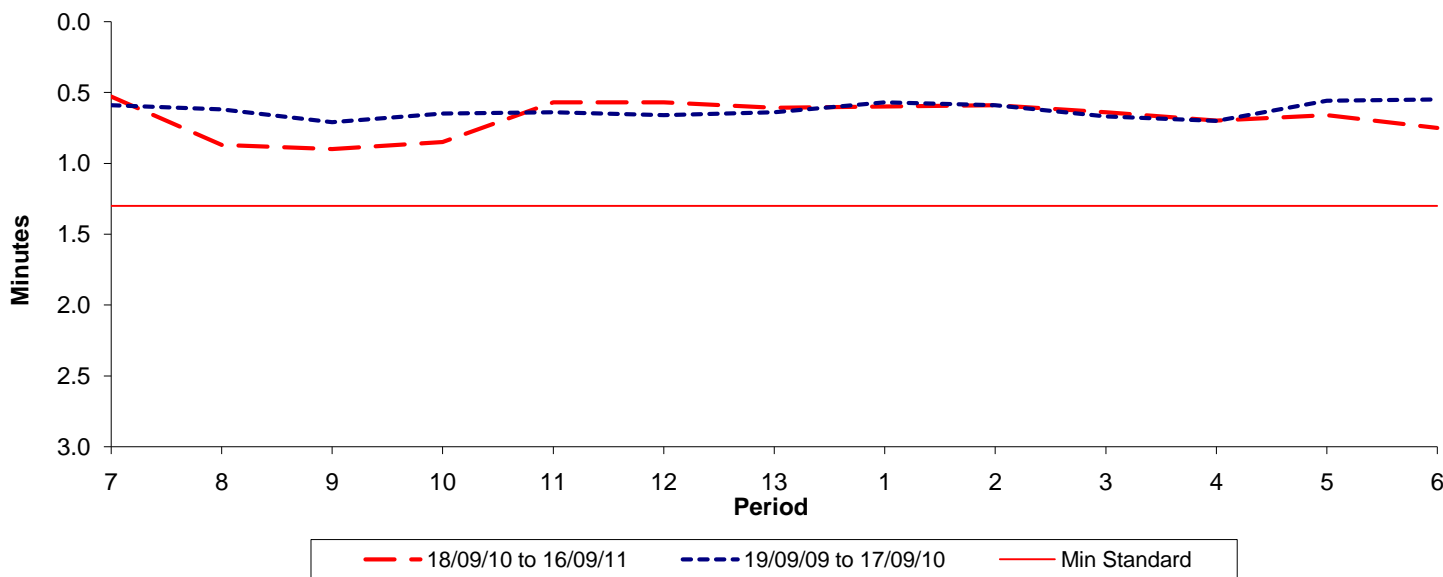




Reliability Performance (High Frequency)

Excess Waiting Time (minutes)

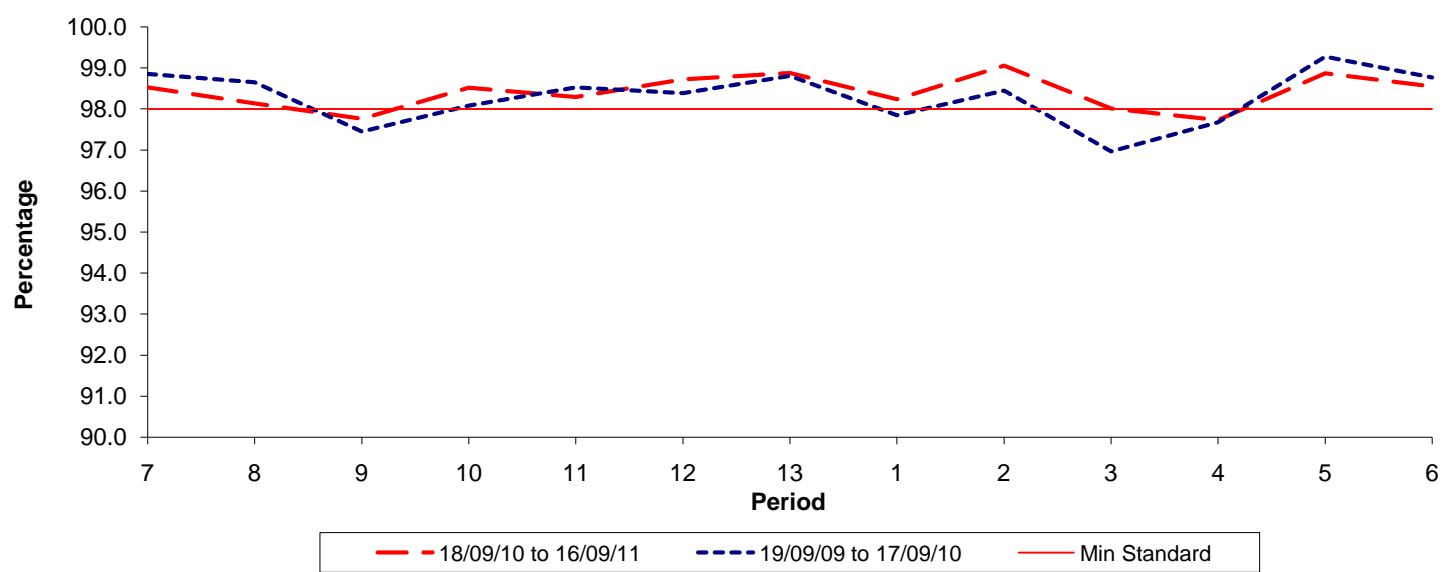


Date Range / Period	7	8	9	10	11	12	13	1	2	3	4	5	6
18/09/10 to 16/09/11	0.53	0.87	0.90	0.85	0.57	0.57	0.61	0.60	0.59	0.64	0.70	0.66	0.75
19/09/09 to 17/09/10	0.59	0.62	0.71	0.65	0.64	0.66	0.64	0.57	0.59	0.67	0.70	0.56	0.55
Min Standard	1.30	1.30	1.30	1.30	1.30	1.30	1.30	1.30	1.30	1.30	1.30	1.30	1.30

Excess Waiting Time figures are based on 12 weeks data

Kilometre Performance

% Kilometres Operated



Date Range / Period	7	8	9	10	11	12	13	1	2	3	4	5	6
18/09/10 to 16/09/11	98.53	98.14	97.76	98.52	98.29	98.73	98.88	98.24	99.06	98.01	97.73	98.87	98.55
19/09/09 to 17/09/10	98.86	98.65	97.45	98.09	98.52	98.39	98.81	97.85	98.45	96.97	97.68	99.27	98.77
Min Standard	98.00	98.00	98.00	98.00	98.00	98.00	98.00	98.00	98.00	98.00	98.00	98.00	98.00

Kilometre figures are based on 4 weeks data