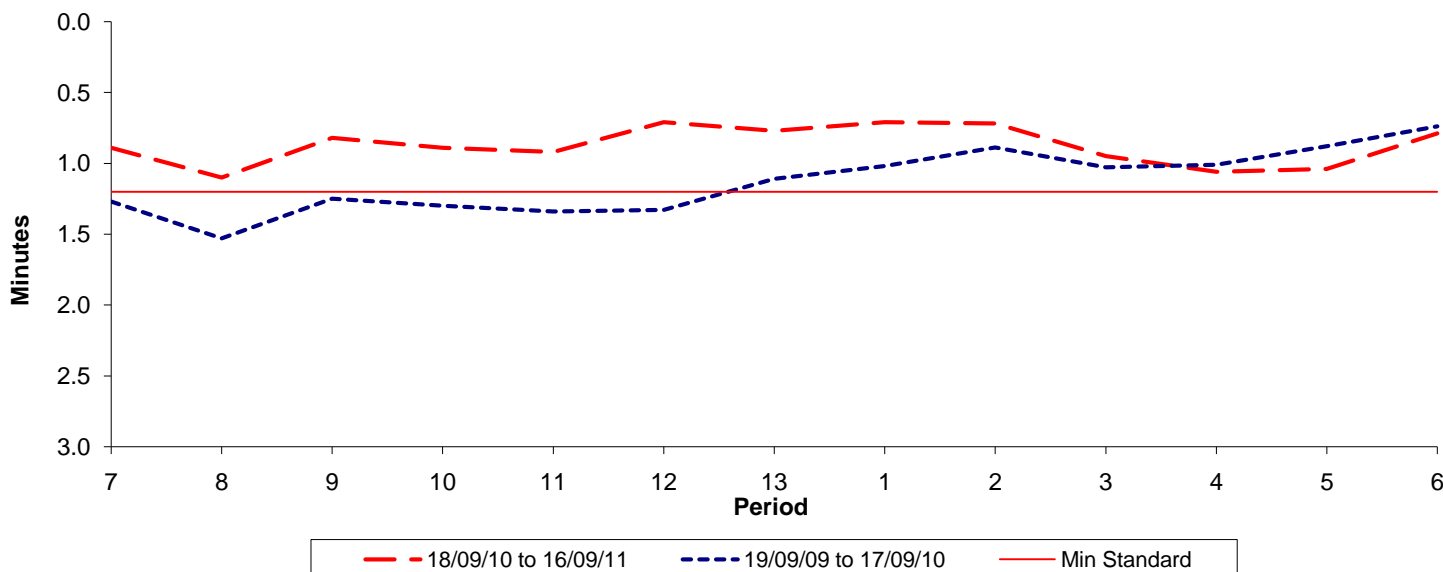




**Reliability Performance ( High Frequency )**

**Excess Waiting Time (minutes)**

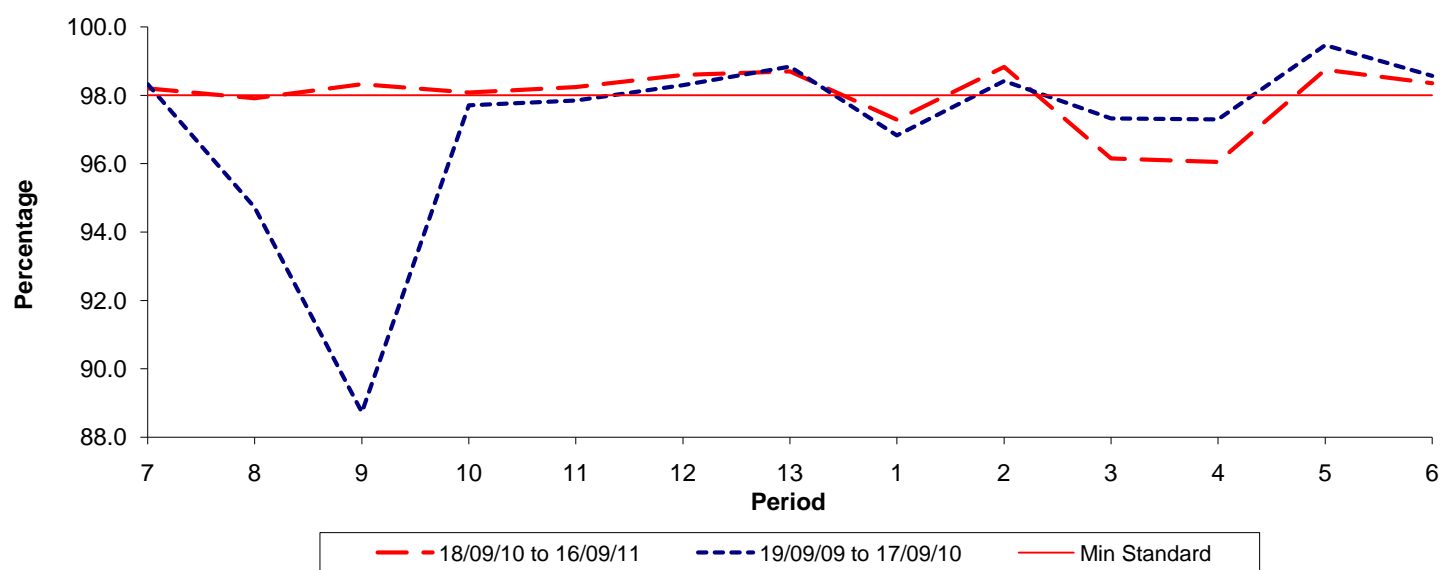


Date Range / Period	7	8	9	10	11	12	13	1	2	3	4	5	6
18/09/10 to 16/09/11	0.89	1.10	0.82	0.89	0.92	0.71	0.77	0.71	0.72	0.95	1.06	1.04	0.79
19/09/09 to 17/09/10	1.27	1.53	1.25	1.30	1.34	1.33	1.11	1.02	0.89	1.03	1.01	0.88	0.74
Min Standard	1.20	1.20	1.20	1.20	1.20	1.20	1.20	1.20	1.20	1.20	1.20	1.20	1.20

Excess Waiting Time figures are based on 12 weeks data

**Kilometre Performance**

**% Kilometres Operated**



Date Range / Period	7	8	9	10	11	12	13	1	2	3	4	5	6
18/09/10 to 16/09/11	98.20	97.91	98.32	98.08	98.24	98.60	98.70	97.29	98.83	96.15	96.05	98.75	98.35
19/09/09 to 17/09/10	98.33	94.72	88.73	97.71	97.85	98.30	98.84	96.83	98.42	97.33	97.30	99.47	98.57
Min Standard	98.00	98.00	98.00	98.00	98.00	98.00	98.00	98.00	98.00	98.00	98.00	98.00	98.00

Kilometre figures are based on 4 weeks data