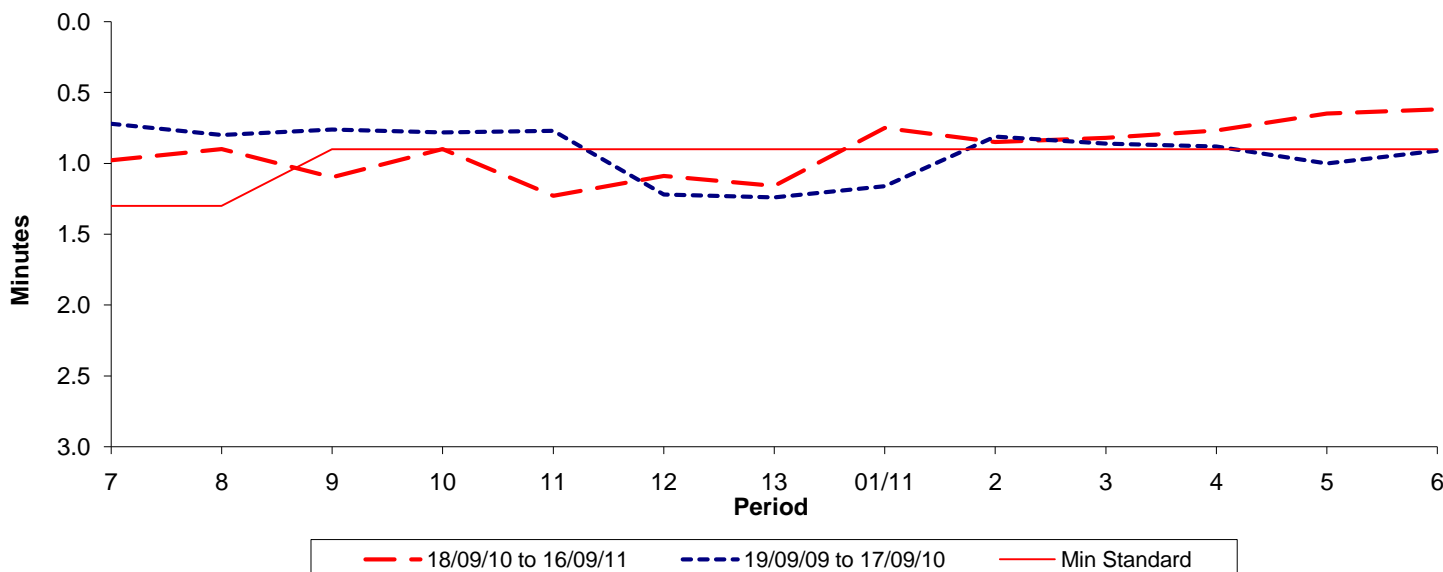




Reliability Performance (High Frequency)

Excess Waiting Time (minutes)

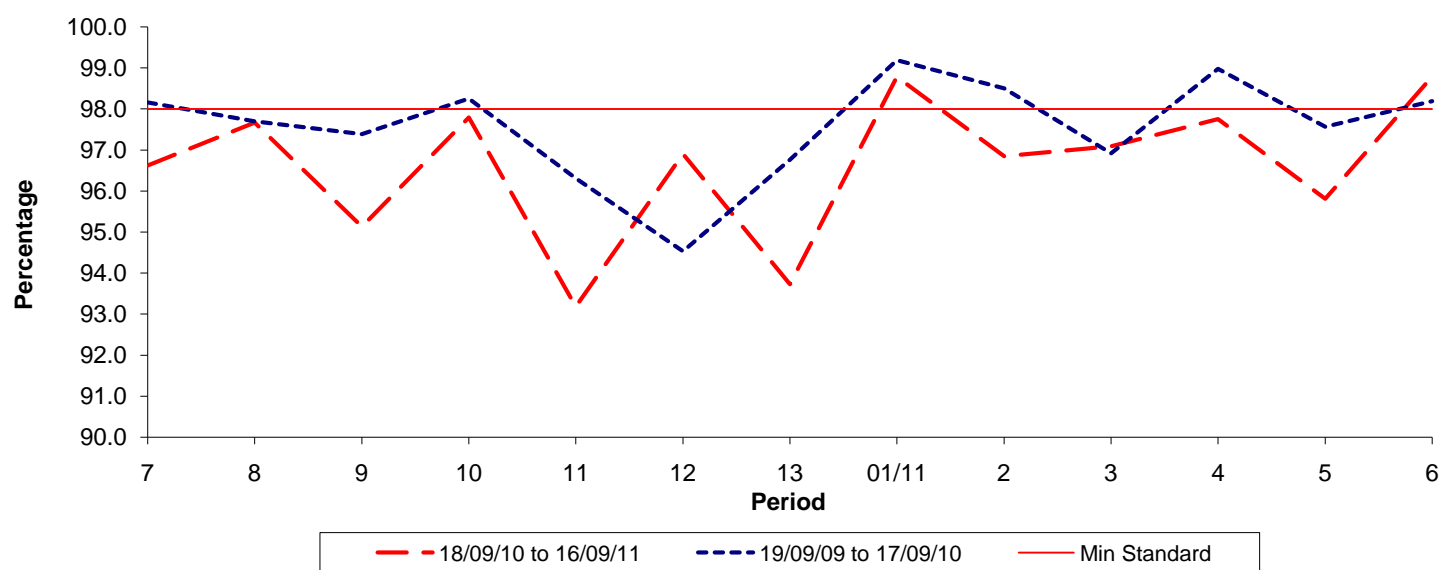


Date Range / Period	7	8	9	10	11	12	13	01/11	2	3	4	5	6
18/09/10 to 16/09/11	0.98	0.90	1.10	0.90	1.23	1.09	1.16	0.75	0.85	0.82	0.77	0.65	0.62
19/09/09 to 17/09/10	0.72	0.80	0.76	0.78	0.77	1.22	1.24	1.16	0.81	0.86	0.88	1.00	0.91
Min Standard	1.30	1.30	0.90	0.90	0.90	0.90	0.90	0.90	0.90	0.90	0.90	0.90	0.90

Excess Waiting Time figures are based on 12 weeks data

Kilometre Performance

% Kilometres Operated



Date Range / Period	7	8	9	10	11	12	13	01/11	2	3	4	5	6
18/09/10 to 16/09/11	96.62	97.67	95.13	97.79	93.18	96.90	93.73	98.78	96.85	97.09	97.75	95.81	98.79
19/09/09 to 17/09/10	98.16	97.70	97.39	98.25	96.31	94.53	96.76	99.19	98.50	96.92	98.98	97.57	98.19
Min Standard	98.00	98.00	98.00	98.00	98.00	98.00	98.00	98.00	98.00	98.00	98.00	98.00	98.00

Kilometre figures are based on 4 weeks data