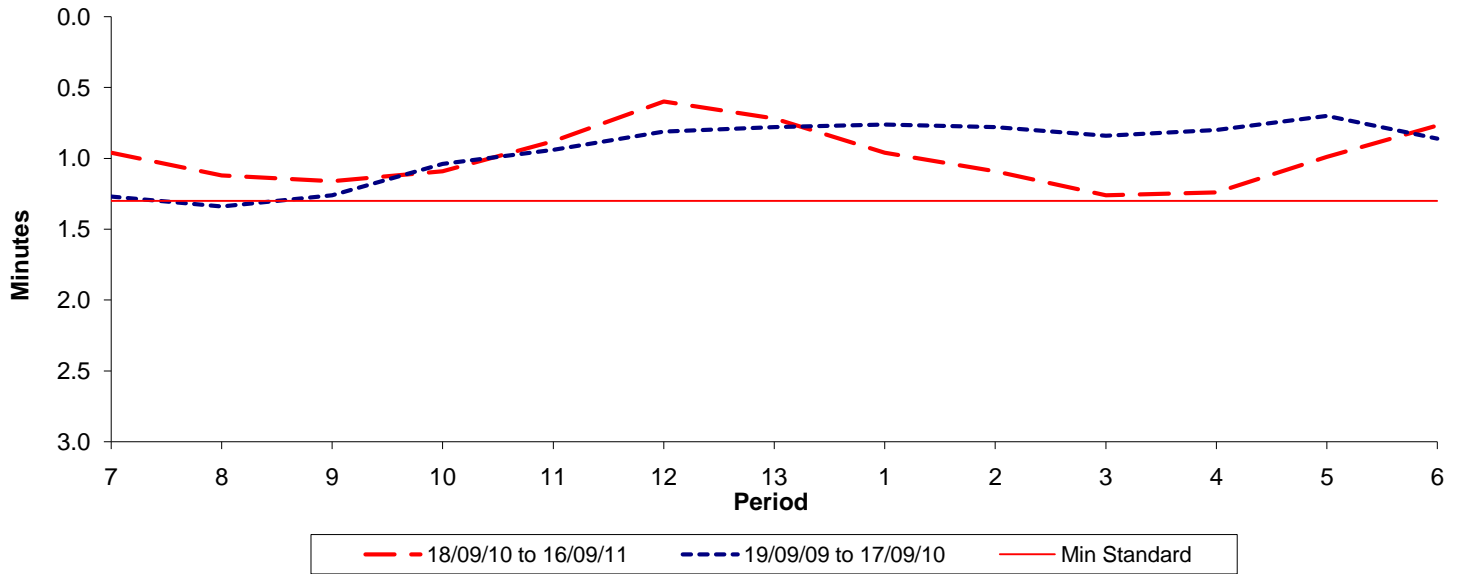




Reliability Performance (High Frequency)

Excess Waiting Time (minutes)

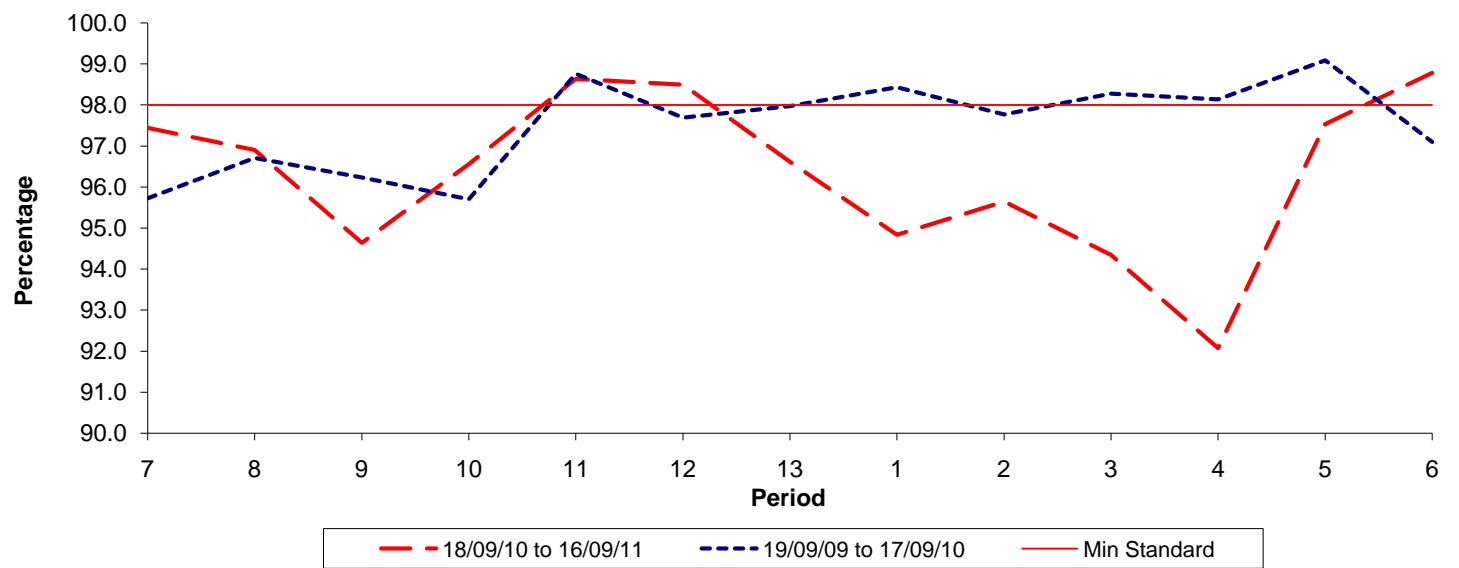


Date Range / Period	7	8	9	10	11	12	13	1	2	3	4	5	6
18/09/10 to 16/09/11	0.96	1.12	1.16	1.09	0.88	0.60	0.72	0.96	1.09	1.26	1.24	0.99	0.77
19/09/09 to 17/09/10	1.27	1.34	1.26	1.04	0.94	0.81	0.78	0.76	0.78	0.84	0.80	0.70	0.86
Min Standard	1.30	1.30	1.30	1.30	1.30	1.30	1.30	1.30	1.30	1.30	1.30	1.30	1.30

Excess Waiting Time figures are based on 12 weeks data

Kilometre Performance

% Kilometres Operated



Date Range / Period	7	8	9	10	11	12	13	1	2	3	4	5	6
18/09/10 to 16/09/11	97.44	96.90	94.64	96.56	98.63	98.49	96.61	94.83	95.64	94.34	92.07	97.53	98.78
19/09/09 to 17/09/10	95.72	96.71	96.23	95.70	98.76	97.69	97.97	98.43	97.77	98.28	98.14	99.09	97.10
Min Standard	98.00	98.00	98.00	98.00	98.00	98.00	98.00	98.00	98.00	98.00	98.00	98.00	98.00

Kilometre figures are based on 4 weeks data