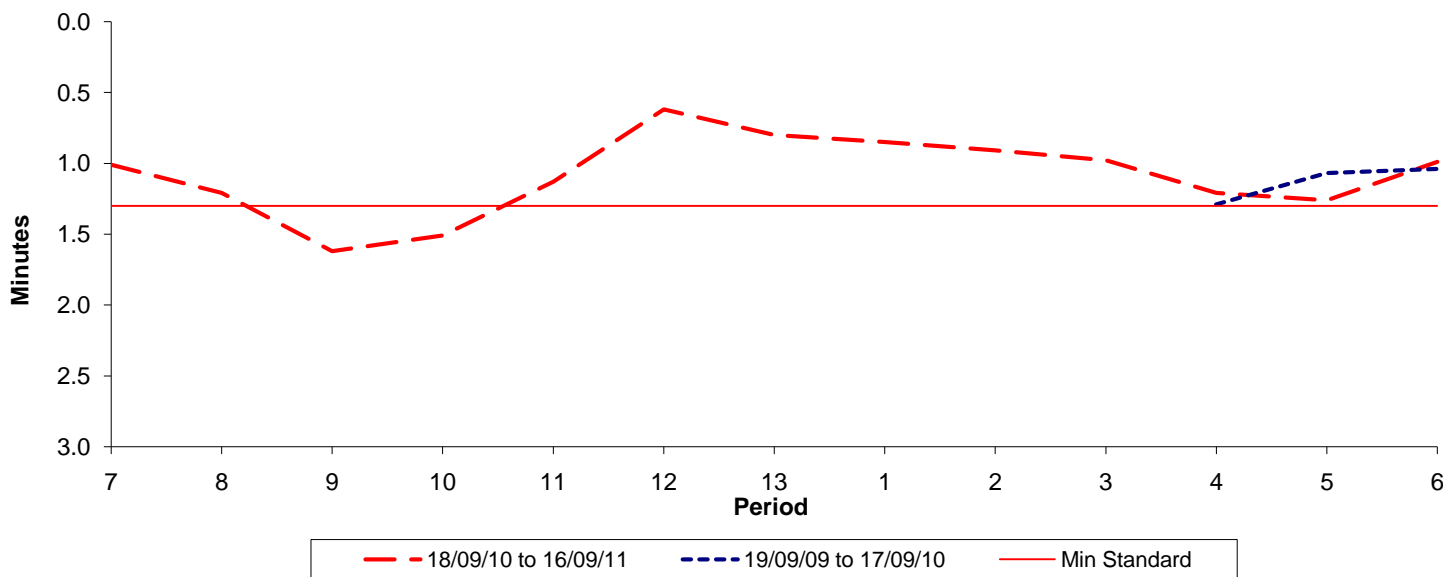




**Reliability Performance ( High Frequency )**

**Excess Waiting Time (minutes)**

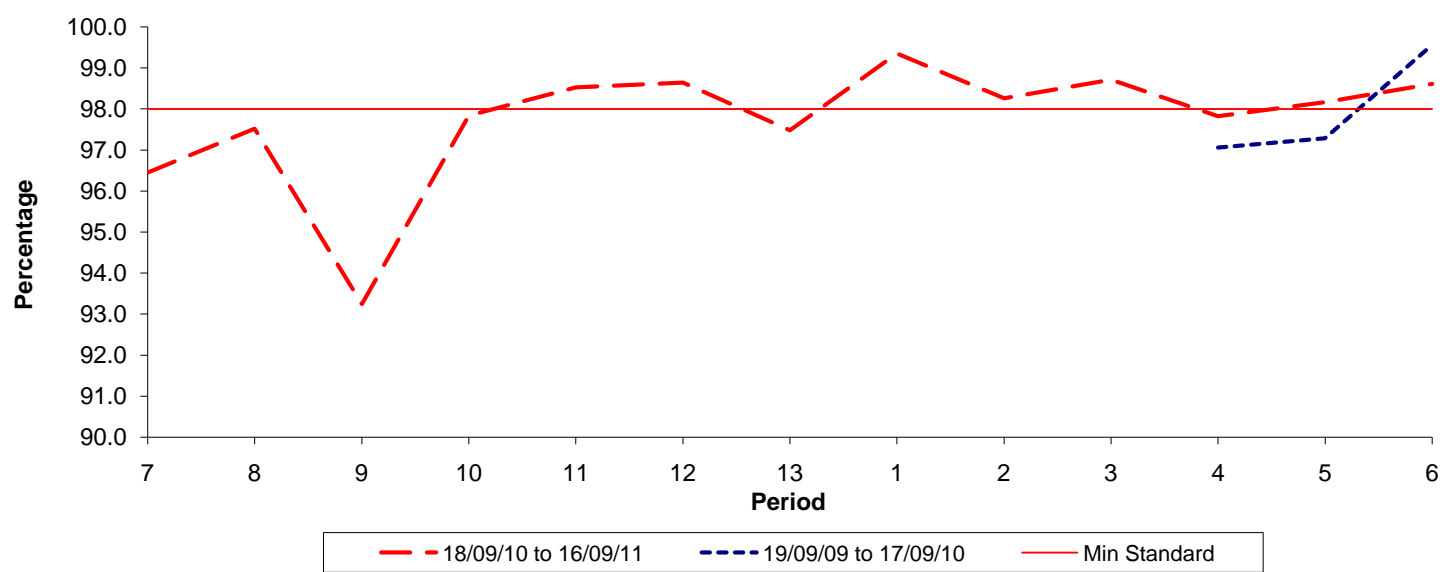


Date Range / Period	7	8	9	10	11	12	13	1	2	3	4	5	6
18/09/10 to 16/09/11	1.01	1.21	1.62	1.51	1.13	0.62	0.80	0.85	0.91	0.98	1.21	1.26	0.99
19/09/09 to 17/09/10											1.29	1.07	1.04
Min Standard	1.30	1.30	1.30	1.30	1.30	1.30	1.30	1.30	1.30	1.30	1.30	1.30	1.30

Excess Waiting Time figures are based on 12 weeks data

**Kilometre Performance**

**% Kilometres Operated**



Date Range / Period	7	8	9	10	11	12	13	1	2	3	4	5	6
18/09/10 to 16/09/11	96.45	97.52	93.24	97.84	98.52	98.64	97.48	99.35	98.26	98.71	97.82	98.16	98.61
19/09/09 to 17/09/10											97.06	97.28	99.56
Min Standard	98.00	98.00	98.00	98.00	98.00	98.00	98.00	98.00	98.00	98.00	98.00	98.00	98.00

Kilometre figures are based on 4 weeks data