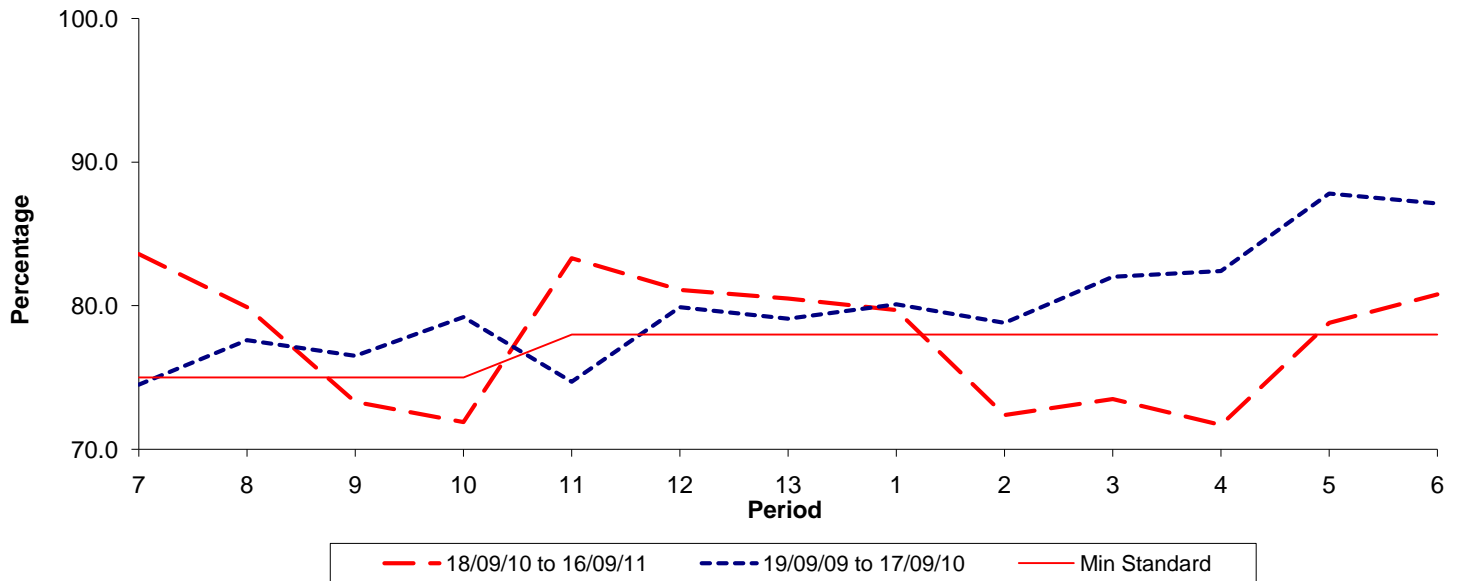




**Reliability Performance ( Low Frequency )**

**% Departing On Time**

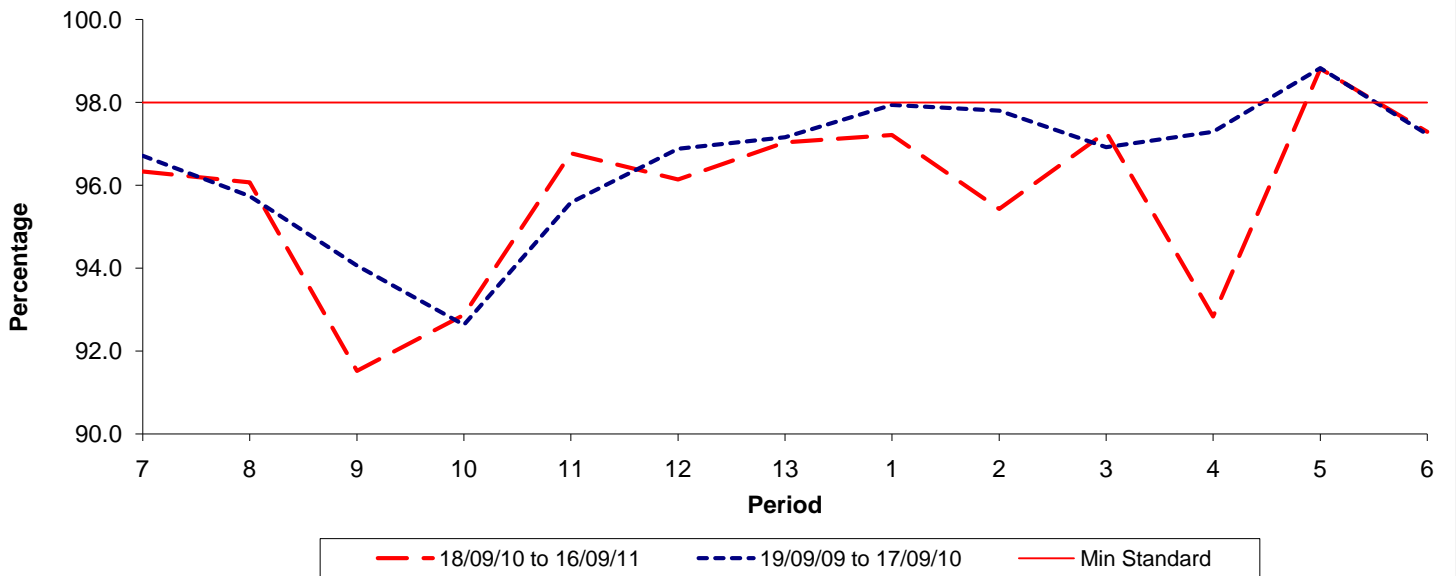


Date Range / Period	7	8	9	10	11	12	13	1	2	3	4	5	6
18/09/10 to 16/09/11	83.60	79.90	73.30	71.90	83.30	81.10	80.50	79.70	72.40	73.50	71.70	78.80	80.80
19/09/09 to 17/09/10	74.50	77.60	76.50	79.20	74.70	79.90	79.10	80.10	78.80	82.00	82.40	87.80	87.10
Min Standard	75.00	75.00	75.00	75.00	78.00	78.00	78.00	78.00	78.00	78.00	78.00	78.00	78.00

On Time figures are based on 12 weeks data

**Kilometre Performance**

**% Kilometres Operated**



Date Range / Period	7	8	9	10	11	12	13	1	2	3	4	5	6
18/09/10 to 16/09/11	96.33	96.07	91.52	92.87	96.77	96.14	97.03	97.21	95.43	97.28	92.83	98.81	97.29
19/09/09 to 17/09/10	96.71	95.74	94.06	92.63	95.58	96.88	97.16	97.94	97.80	96.92	97.29	98.83	97.23
Min Standard	98.00	98.00	98.00	98.00	98.00	98.00	98.00	98.00	98.00	98.00	98.00	98.00	98.00

Kilometre figures are based on 4 weeks data