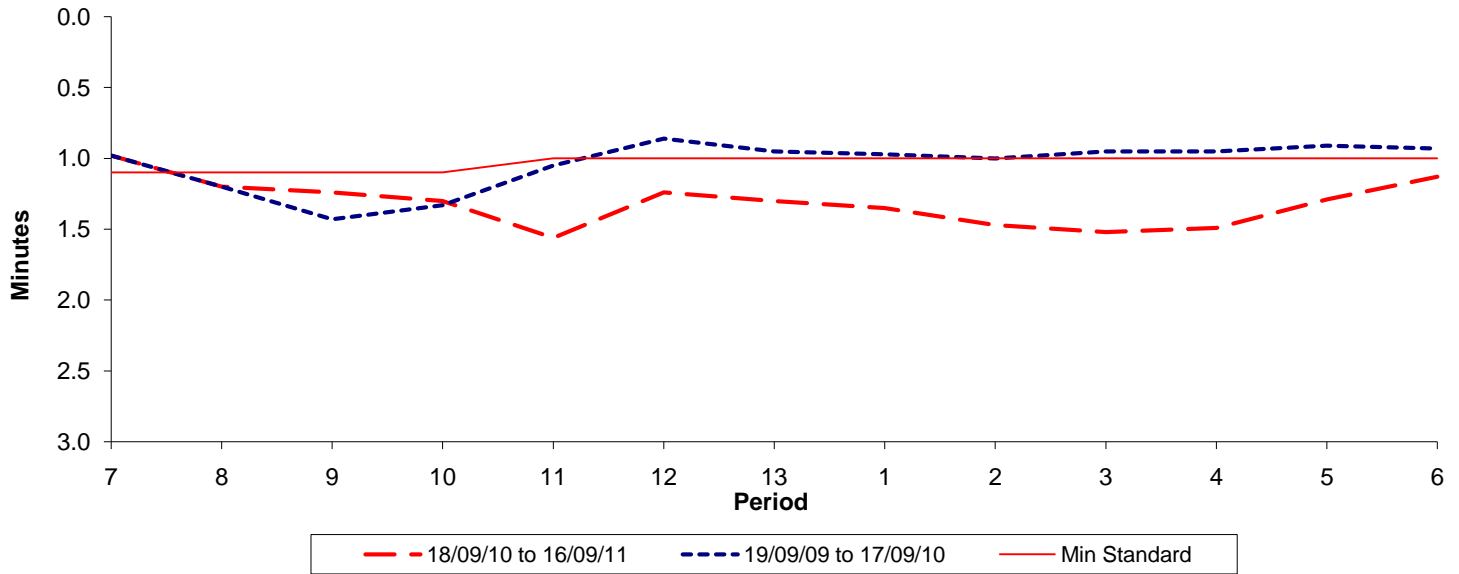




**Reliability Performance ( High Frequency )**

**Excess Waiting Time (minutes)**

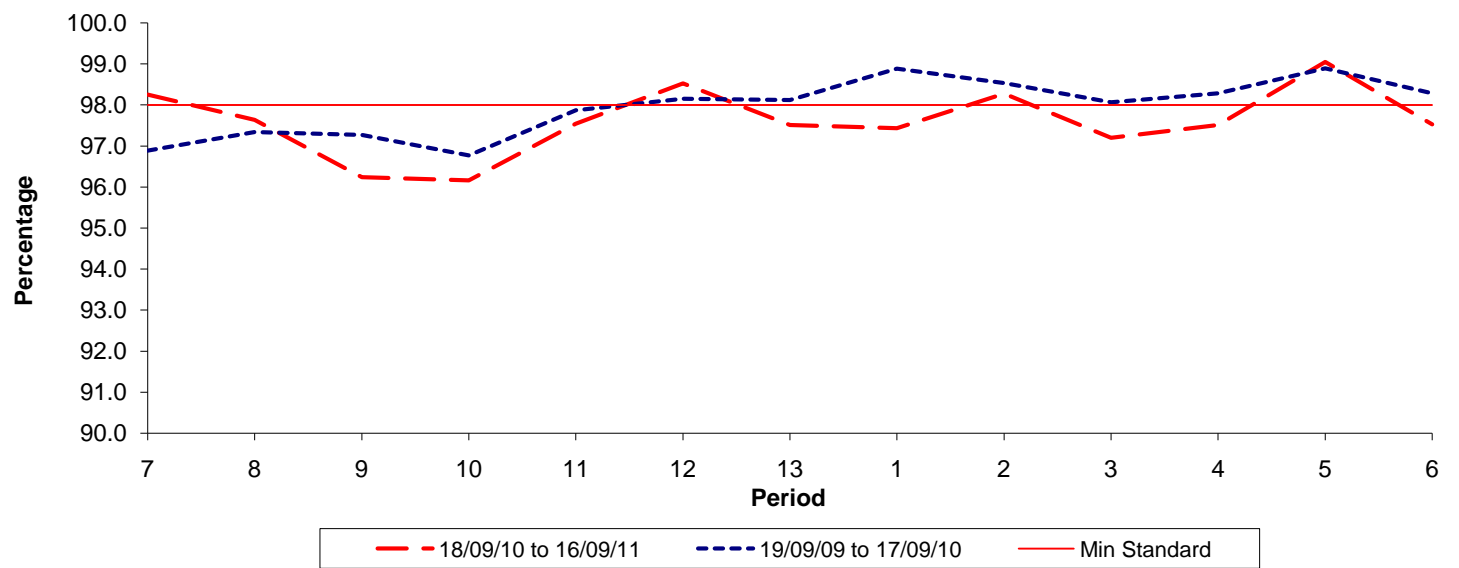


Date Range / Period	7	8	9	10	11	12	13	1	2	3	4	5	6
18/09/10 to 16/09/11	0.98	1.20	1.24	1.30	1.56	1.24	1.30	1.35	1.47	1.52	1.49	1.29	1.13
19/09/09 to 17/09/10	0.98	1.20	1.43	1.33	1.05	0.86	0.95	0.97	1.00	0.95	0.95	0.91	0.93
Min Standard	1.10	1.10	1.10	1.10	1.00	1.00	1.00	1.00	1.00	1.00	1.00	1.00	1.00

Excess Waiting Time figures are based on 12 weeks data

**Kilometre Performance**

**% Kilometres Operated**



Date Range / Period	7	8	9	10	11	12	13	1	2	3	4	5	6
18/09/10 to 16/09/11	98.25	97.64	96.24	96.16	97.54	98.53	97.51	97.43	98.28	97.20	97.51	99.05	97.53
19/09/09 to 17/09/10	96.89	97.34	97.27	96.77	97.87	98.15	98.12	98.88	98.53	98.06	98.28	98.89	98.28
Min Standard	98.00	98.00	98.00	98.00	98.00	98.00	98.00	98.00	98.00	98.00	98.00	98.00	98.00

Kilometre figures are based on 4 weeks data