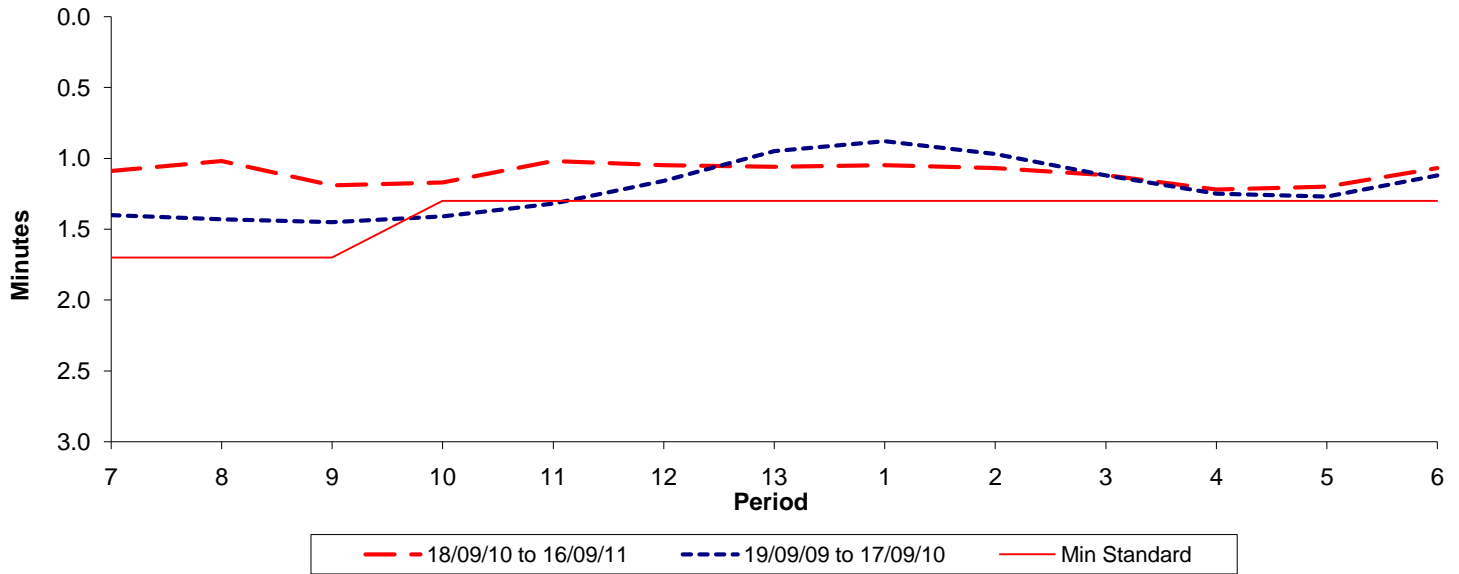




Reliability Performance (High Frequency)

Excess Waiting Time (minutes)

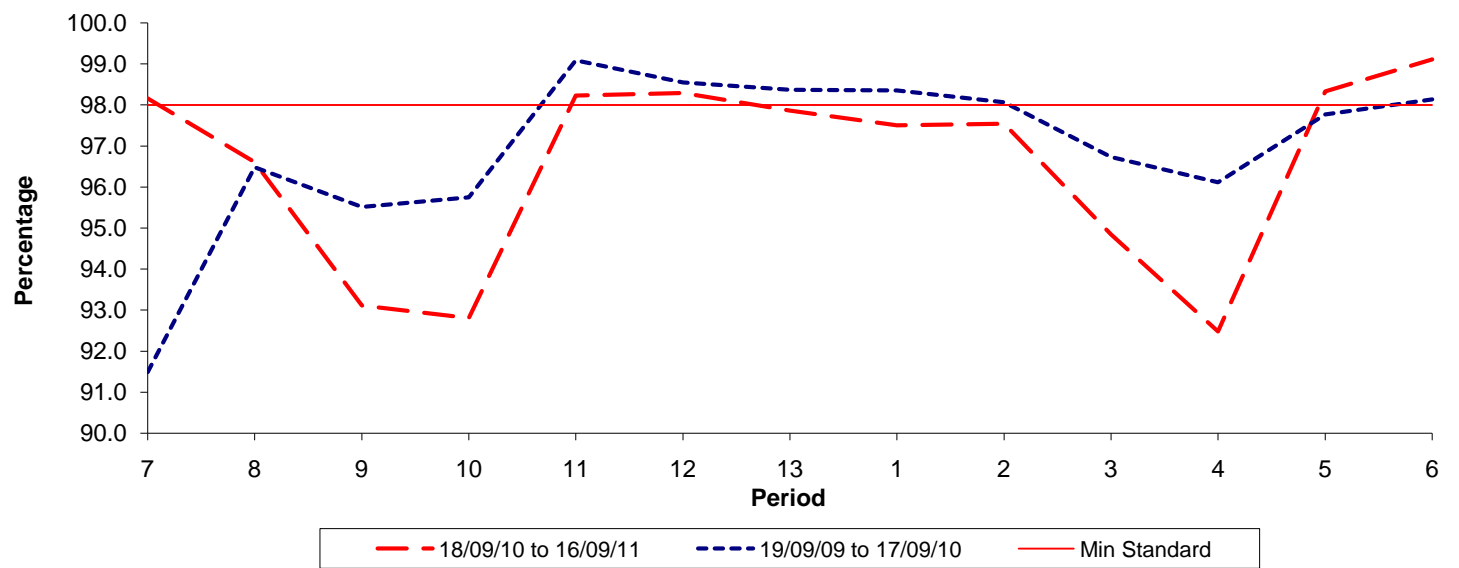


Date Range / Period	7	8	9	10	11	12	13	1	2	3	4	5	6
18/09/10 to 16/09/11	1.09	1.02	1.19	1.17	1.02	1.05	1.06	1.05	1.07	1.12	1.22	1.20	1.07
19/09/09 to 17/09/10	1.40	1.43	1.45	1.41	1.32	1.16	0.95	0.88	0.97	1.12	1.25	1.27	1.12
Min Standard	1.70	1.70	1.70	1.30	1.30	1.30	1.30	1.30	1.30	1.30	1.30	1.30	1.30

Excess Waiting Time figures are based on 12 weeks data

Kilometre Performance

% Kilometres Operated



Date Range / Period	7	8	9	10	11	12	13	1	2	3	4	5	6
18/09/10 to 16/09/11	98.16	96.61	93.11	92.81	98.23	98.29	97.86	97.50	97.54	94.84	92.48	98.33	99.11
19/09/09 to 17/09/10	91.49	96.48	95.52	95.75	99.09	98.55	98.37	98.36	98.07	96.73	96.12	97.77	98.14
Min Standard	98.00	98.00	98.00	98.00	98.00	98.00	98.00	98.00	98.00	98.00	98.00	98.00	98.00

Kilometre figures are based on 4 weeks data