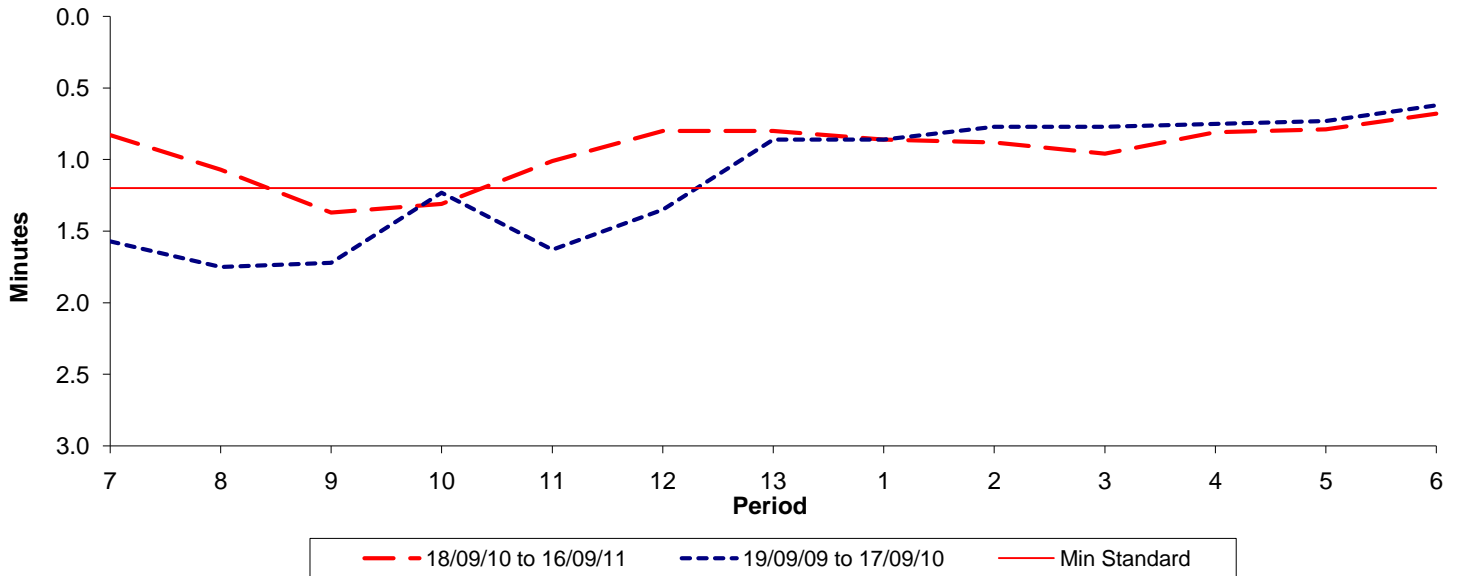




Reliability Performance (High Frequency)

Excess Waiting Time (minutes)

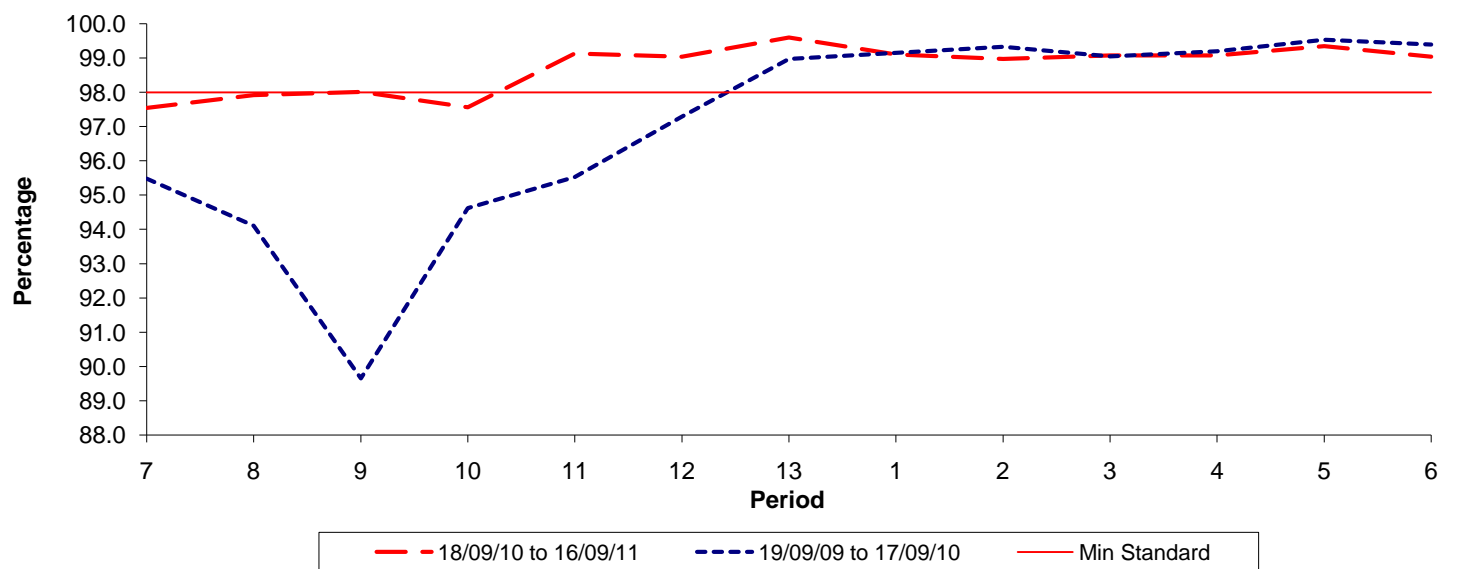


Date Range / Period	7	8	9	10	11	12	13	1	2	3	4	5	6
18/09/10 to 16/09/11	0.83	1.07	1.37	1.31	1.01	0.80	0.80	0.86	0.88	0.96	0.81	0.79	0.68
19/09/09 to 17/09/10	1.57	1.75	1.72	1.23	1.63	1.35	0.86	0.86	0.77	0.77	0.75	0.73	0.62
Min Standard	1.20	1.20	1.20	1.20	1.20	1.20	1.20	1.20	1.20	1.20	1.20	1.20	1.20

Excess Waiting Time figures are based on 12 weeks data

Kilometre Performance

% Kilometres Operated



Date Range / Period	7	8	9	10	11	12	13	1	2	3	4	5	6
18/09/10 to 16/09/11	97.54	97.91	98.01	97.56	99.13	99.04	99.60	99.10	98.97	99.08	99.08	99.35	99.04
19/09/09 to 17/09/10	95.48	94.10	89.65	94.62	95.52	97.29	98.97	99.15	99.32	99.04	99.19	99.53	99.39
Min Standard	98.00	98.00	98.00	98.00	98.00	98.00	98.00	98.00	98.00	98.00	98.00	98.00	98.00

Kilometre figures are based on 4 weeks data