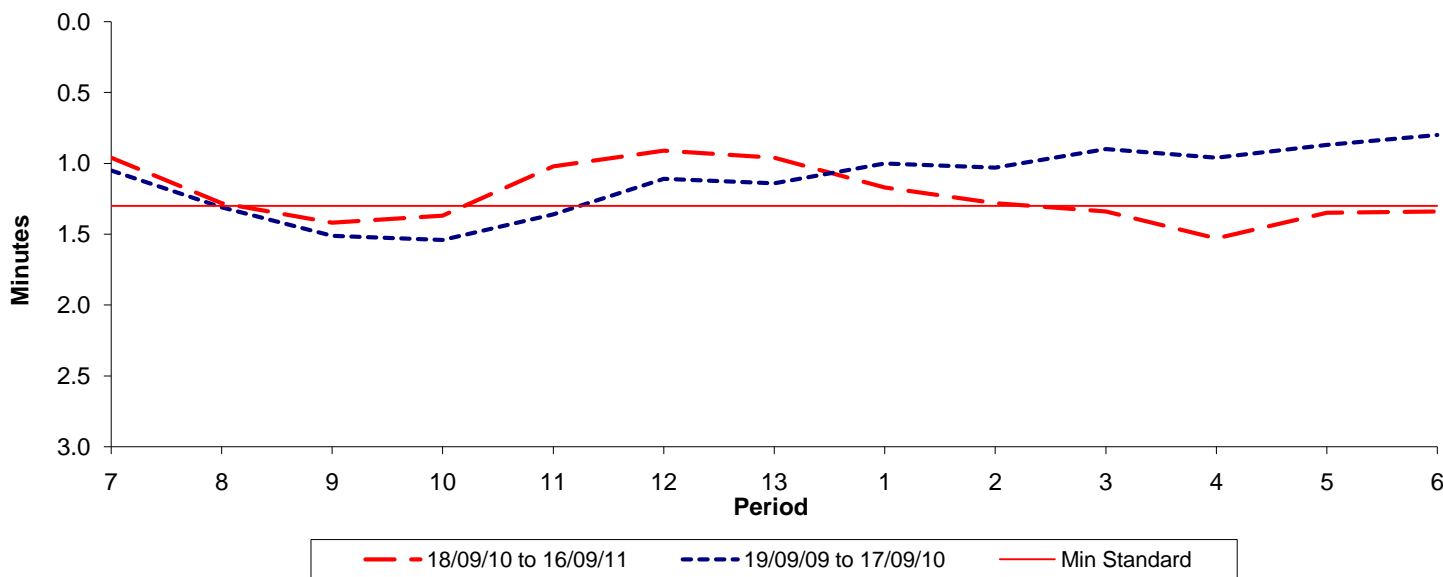




Reliability Performance (High Frequency)

Excess Waiting Time (minutes)

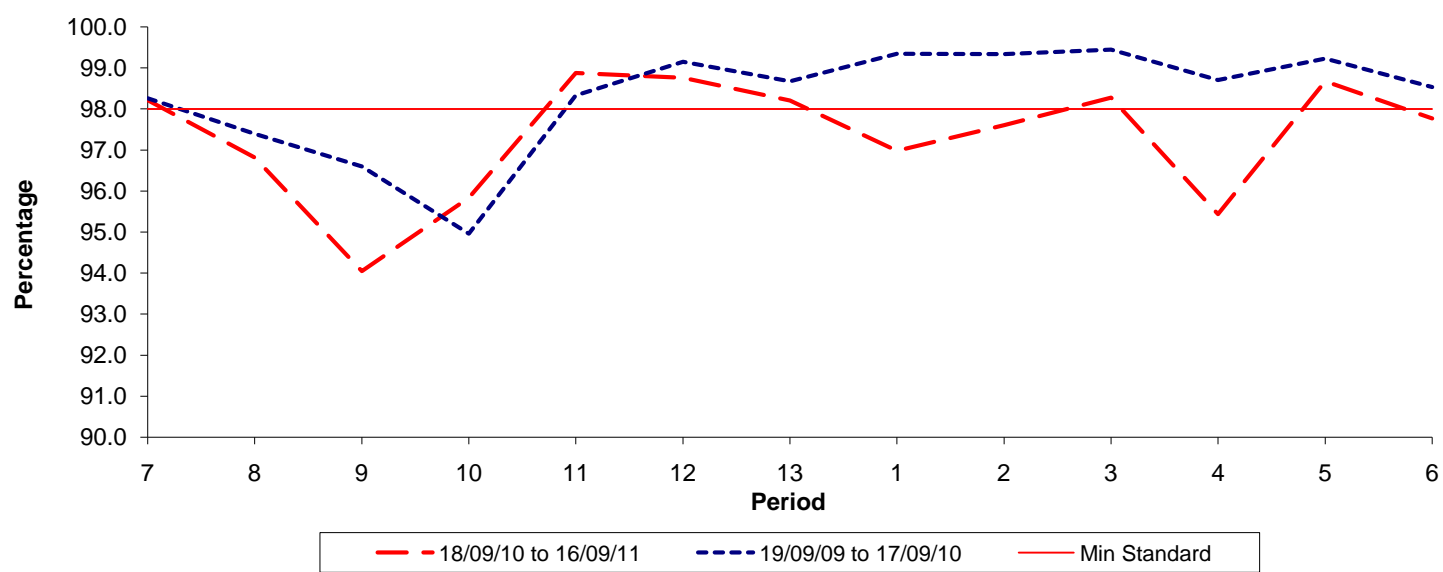


Date Range / Period	7	8	9	10	11	12	13	1	2	3	4	5	6
18/09/10 to 16/09/11	0.96	1.28	1.42	1.37	1.02	0.91	0.96	1.17	1.28	1.34	1.53	1.35	1.34
19/09/09 to 17/09/10	1.05	1.31	1.51	1.54	1.36	1.11	1.14	1.00	1.03	0.90	0.96	0.87	0.80
Min Standard	1.30	1.30	1.30	1.30	1.30	1.30	1.30	1.30	1.30	1.30	1.30	1.30	1.30

Excess Waiting Time figures are based on 12 weeks data

Kilometre Performance

% Kilometres Operated



Date Range / Period	7	8	9	10	11	12	13	1	2	3	4	5	6
18/09/10 to 16/09/11	98.22	96.82	94.05	95.84	98.88	98.76	98.21	96.98	97.61	98.28	95.44	98.68	97.77
19/09/09 to 17/09/10	98.26	97.40	96.60	94.96	98.33	99.15	98.68	99.35	99.34	99.45	98.71	99.23	98.54
Min Standard	98.00	98.00	98.00	98.00	98.00	98.00	98.00	98.00	98.00	98.00	98.00	98.00	98.00

Kilometre figures are based on 4 weeks data